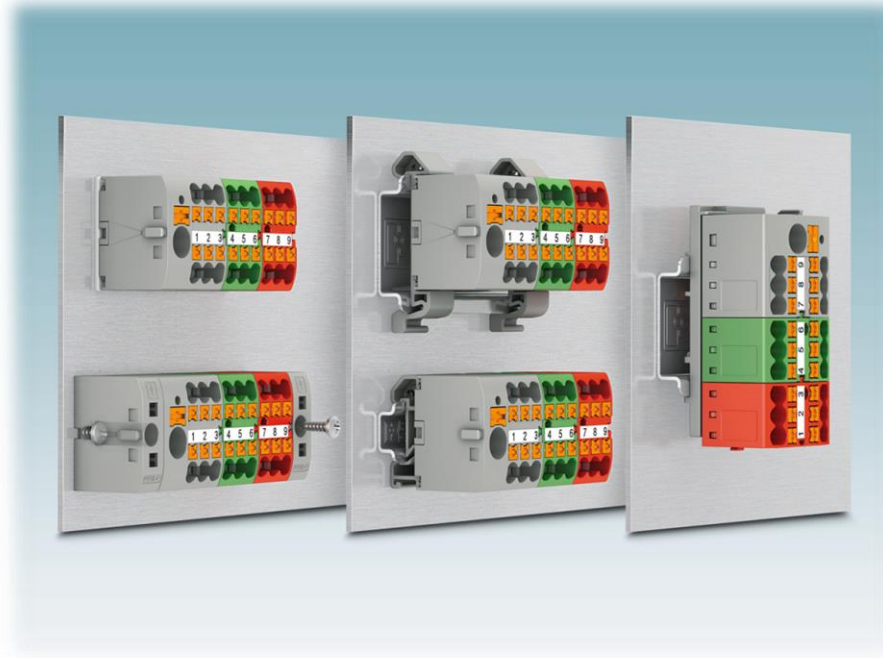


PTFIX Distribution Blocks

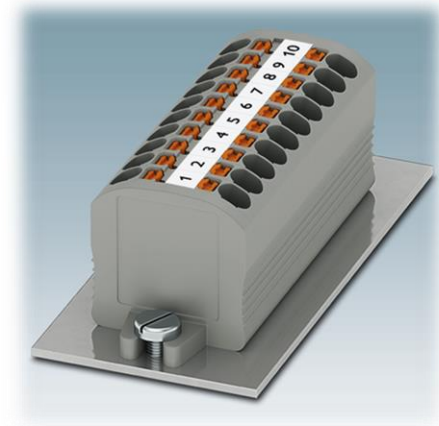
Mounting Options



1.5mm² blocks

Basic blocks- self assembly

- These blocks mount directly with a flange
- The flange can be purchased as an accessory (PN 3003116)
- There are no DIN rail attachment accessories available for the basic block



PTFIX 1.5-DF
(3003116)

1.5mm² blocks

Adhesive

- Adhesive mounted blocks come with a strong adhesive material that can be activated by peeling off the film
- Blocks can then be mounted anywhere adhesive will stick



1.5mm² blocks

DIN Rail

- 1.5mm² blocks can only be mounted horizontally on NS15 DIN rail
- Blocks in this smaller offering currently do not have vertical or NS35 options
- Blocks come with mounting hardware for NS15 DIN rail



2.5mm² and 2.5mm² with 6mm² feed in blocks

Mounting

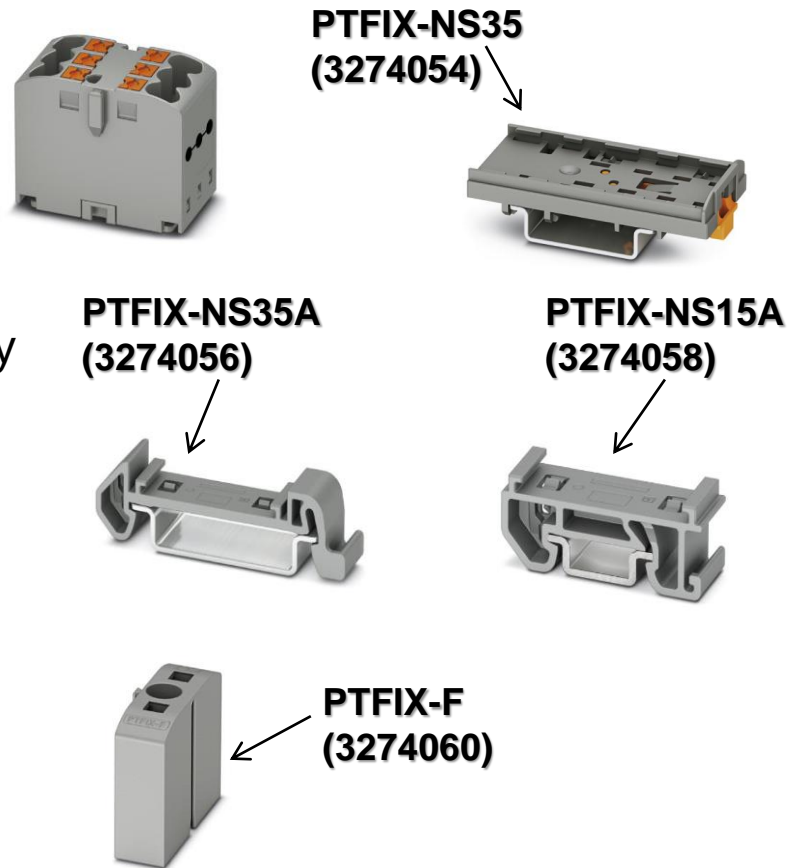
- Both the 2.5mm² blocks and the 2.5mm² with a 6mm² feed in have the same mounting options
- Although one has the feed in, the blocks are the same dimensions and accept the same mounting attachments



2.5mm² and 2.5mm² with 6mm² feed in blocks

Basic blocks- self assembly

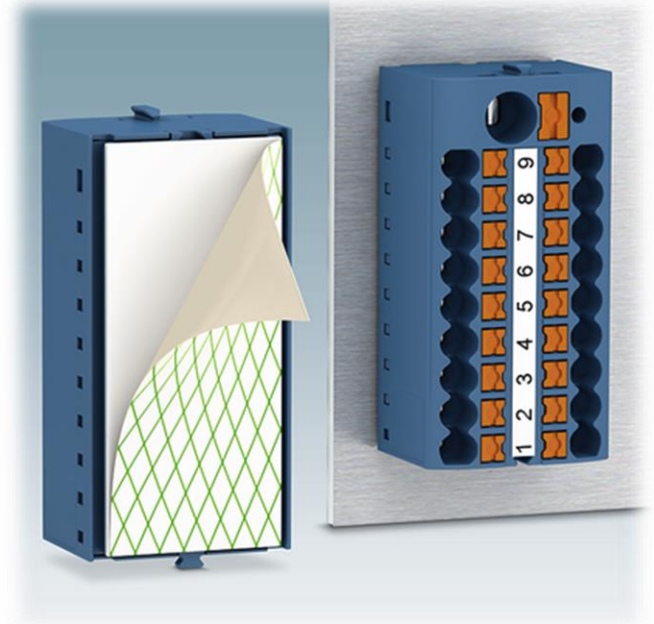
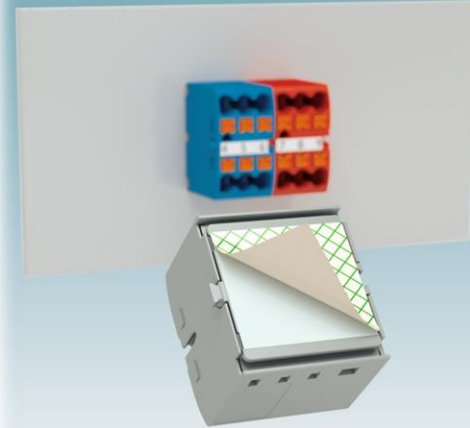
- This option comes as a naked block. The following accessories can be ordered to satisfy different mounting needs...
- Flange mount (3274060)
- Horizontal NS35 w/o end stop (3274056)
- Horizontal NS35 w/end stop (3274057)
- Vertical NS35 adapter (3274054)
- Horizontal NS15 w/o end stop (3274058)
- Horizontal NS15 w/end stop (3274059)



2.5mm² and 2.5mm² with 6mm² feed in blocks

Adhesive

- Just as their smaller counterparts, these blocks can be mounted anywhere the strong adhesive can be attached



2.5mm² and 2.5mm² with 6mm² feed in blocks

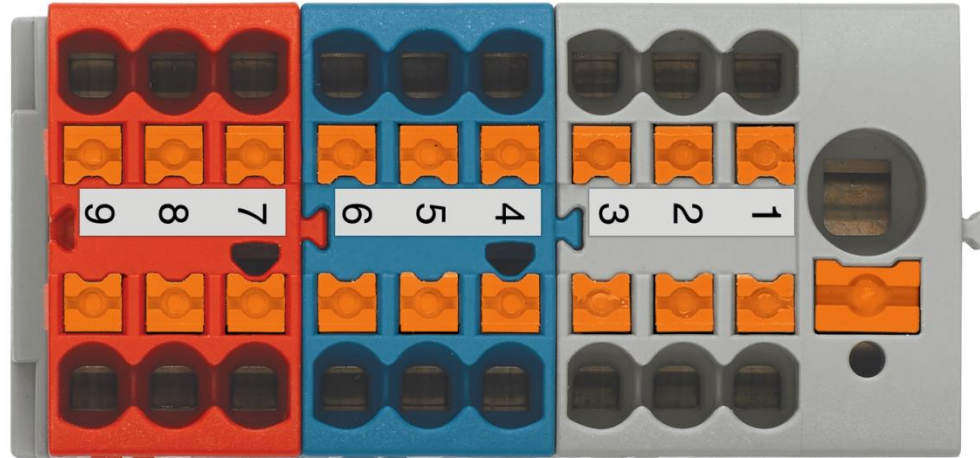
DIN Rail

- These DIN rail options all come with the respective hardware needed for their mounting orientation
- For example, PN 3273132 (horizontal mounting NS35) will come with the aforementioned accessory, 3274056
- However, this is only what the block will come with. They can be swapped out with different mounting accessories
- These options include transverse NS35, horizontal NS35, and horizontal NS15



PTFIX Distribution Blocks

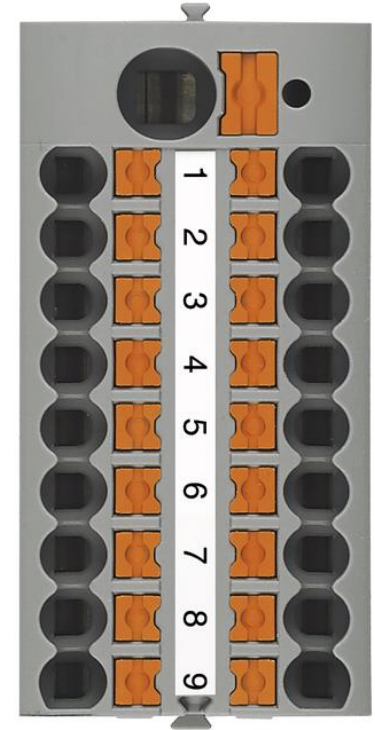
Marking



Marking

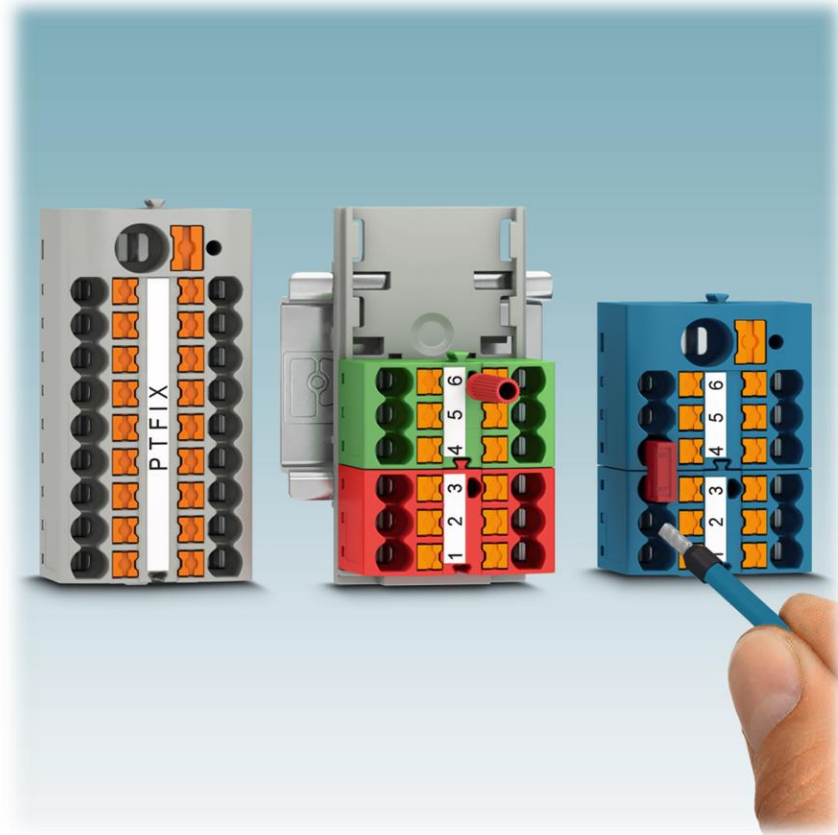
TML (EX3.8)R

- PTFIX distribution blocks utilize TML (EX3.8)R marking foil for their marking needs (PN 0801837)
- This is adhesive marking that can be printed using Phoenix Contact's THERMOMARK printers



PTFIX Distribution Blocks

Connectivity



Connectivity

Physical Connection

- PTFIX blocks can be easily and quickly physically connected to increase the amount of connections, or to connect a feed in block to a non-feed in block
- The blocks physically connect with a simple slide and a reassuring click when they are engaged
- The connection is made with diamond shaped tabs that snap into each other
- This DOES NOT create an electronic connection



Connectivity

Electronic Connection

- Out of the box, PTFIX blocks come as one piece with 6, 12, or 18 terminal points (equivalent to 3, 6, or 9 terminal blocks connected)
- As a single block, there is an electronic connection between these points, there is no need for bridging
- However, when another block is physically connected, there needs to be a bridge between the two separate blocks

