

ELI Touch Screen Calibration in Windows 7

Windows 7 Calibration Guide

Summary:

This guide will show you how to calibrate your ELI in a Windows 7 environment. We will use the Tablet PC Settings menu to calibrate your ELI. This OS level touch screen calibration data will be saved on the host machine, so if the ELI unit is moved to another host machine, the calibration will need to be redone.

This method has been tested and confirmed working on the following ELI units:

- ELI70-CR
- ELI70-IPHW
- ELI121-CRW

Target Device(s):

- ELI Device.....[Website](#)

Required Software:

- Windows 7

Contents

1. Connecting to the Board	2
2. Calibrating your ELI.....	3
3. Website and Support	8

1. Connecting to the Board

1. Connect your HDMI source to the HDMI input on the ELI.
2. Connect your 12V power supply to the power input on the ELI.
3. Connect your USB to the mini USB touch output on the ELI.

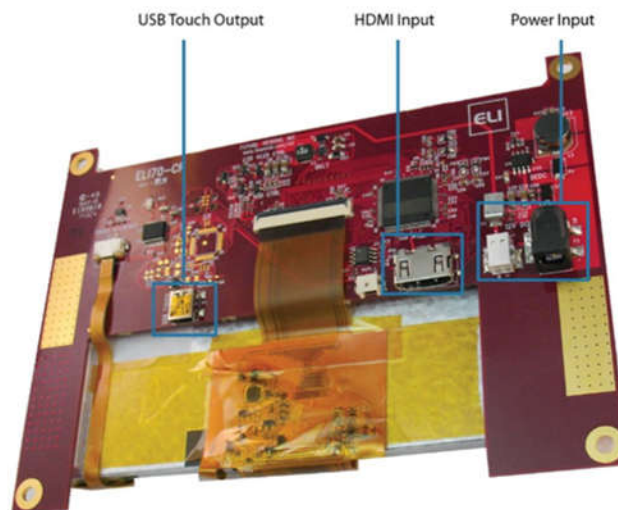


Figure 1 – Connecting the ELI (example using the ELI70-CR)

2. Calibrating your ELI

The following steps will guide you performing an OS-level touch screen calibration for computers using Windows 7. After the display is detected, the display settings must be changed to set the ELI as a secondary display. Once this is done, then the calibration can be run.

1. Press the Windows button, , then type “extend” to search.

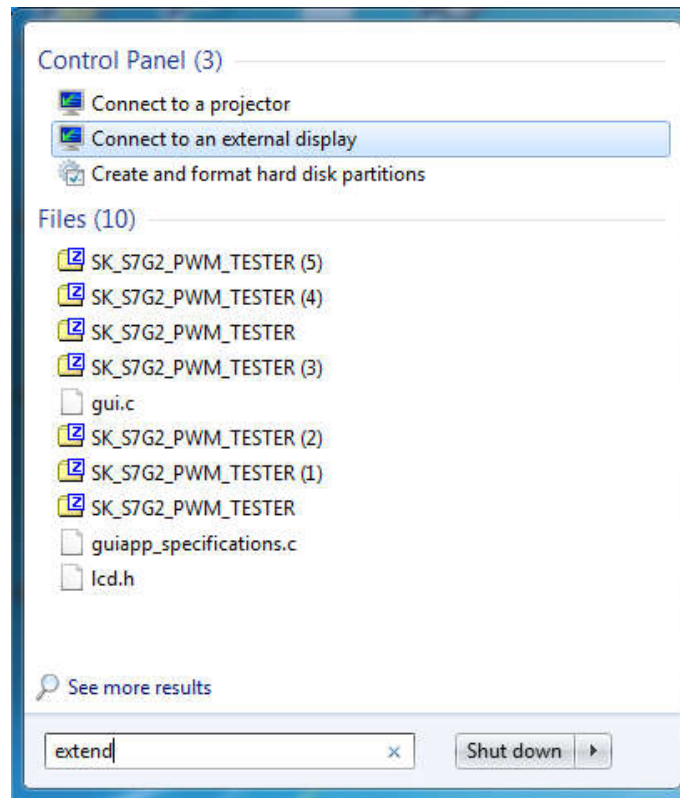


Figure 2. Opening Display settings

2. Click on **Connect to an external display**.

3. In the **Display** dropdown menu select your ELI device and under **Multiple displays**, select **Extend desktop to this display**, then select **Apply**.

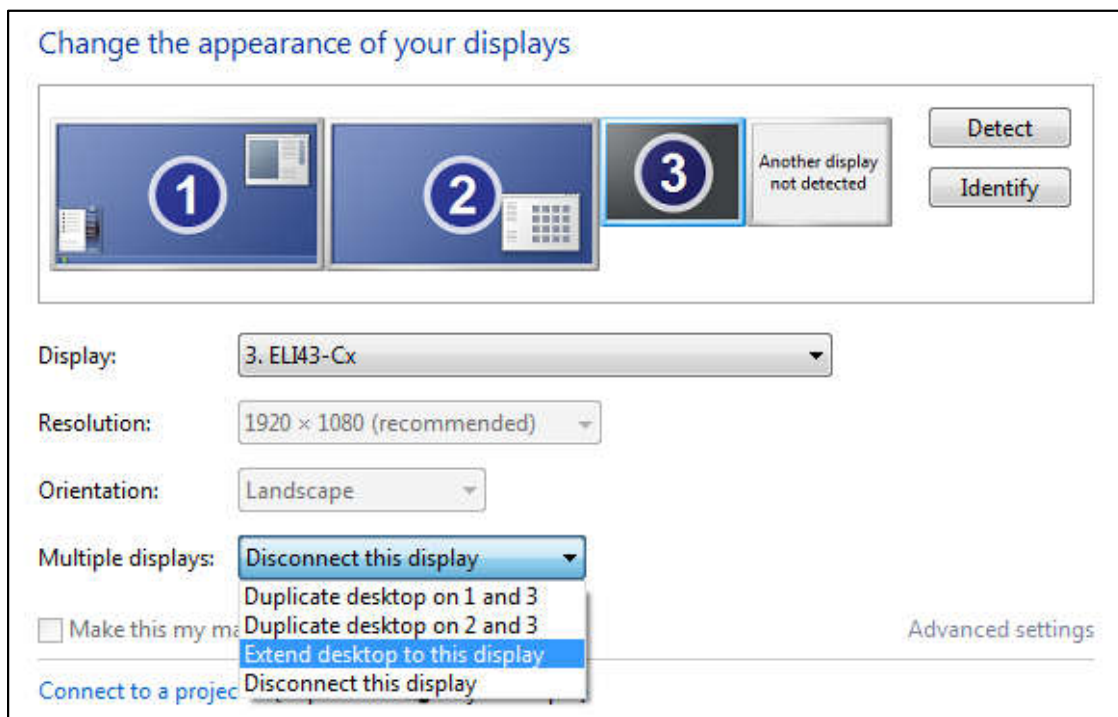


Figure 3. Extending the display to ELI

4. If prompted, select **Keep these settings**.

5. Press the Windows button, , then type “calibrate” into the bottom left search box.

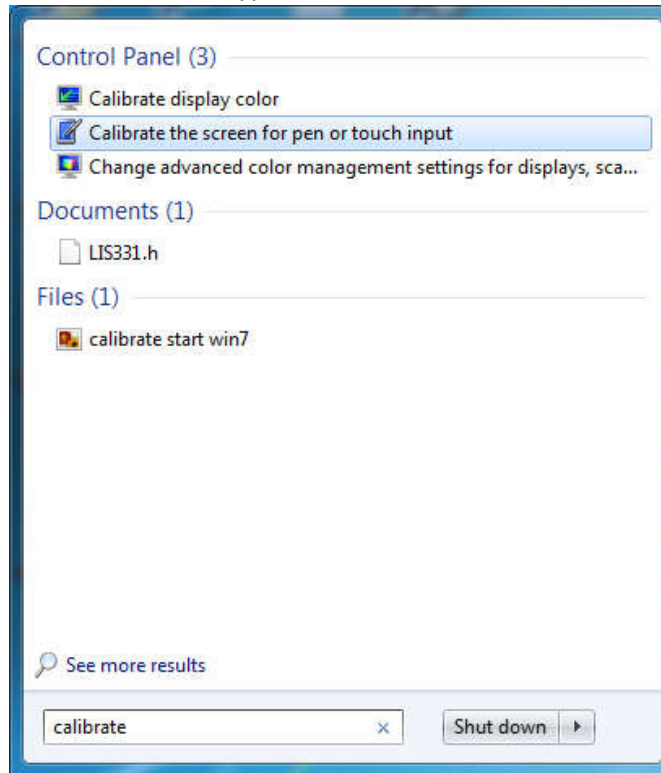


Figure 4. Ensuring your system is touch enabled

6. If you do not see **Calibrate the screen for pen or touch input**, follow Steps **a** through **d** below. Otherwise, continue to step 8.
- Click on **Start > Control Panel > Programs > Programs and Features**.
 - On the left of the window, click on the link titled **Turn Windows Features on or off**.



Figure 5. Turn Windows features on or off

- c. The window that pops up should be the **Turn Windows Features on or off** menu. Scroll to the folder labeled **Tablet PC Components** and check the box next to it.

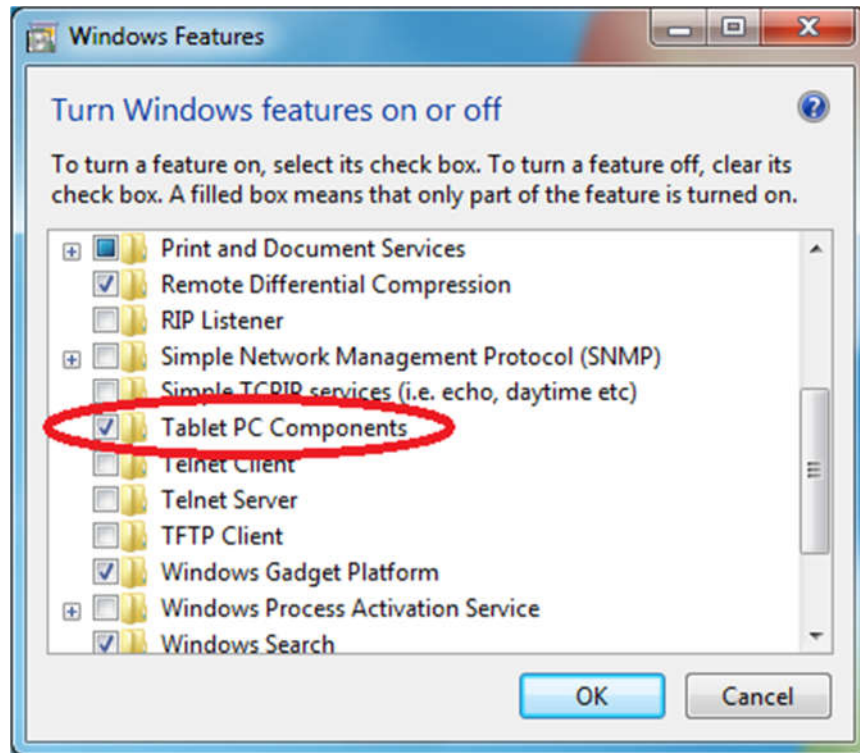



Figure 6. Enabling Tablet PC Components

- d. Click **<OK>** to finish.

7. Press the Windows button, , then type “calibrate” into the bottom left search box.

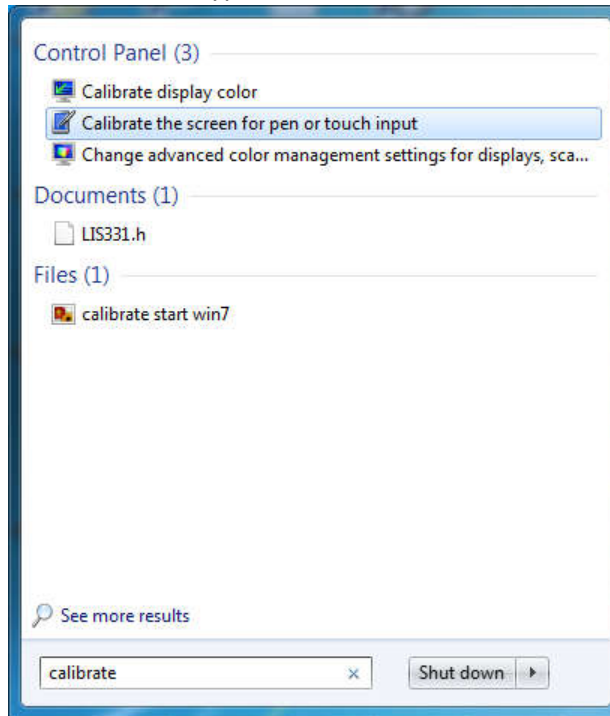


Figure 7. Finding the Calibration Utility

8. Click on **Calibrate the screen for pen or touch input**.
9. In the menu that pops up, find the ELI device in the dropdown menu. In our example, ELI is not the first option.

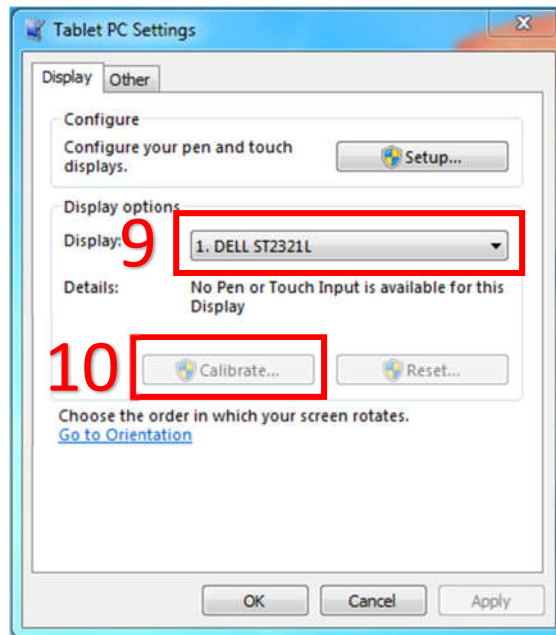


Figure 8. Tablet PC Menu

10. Once you have the ELI display selected, click on **Calibrate...** and follow the on screen instructions to calibrate your ELI touch screen with Windows 7.

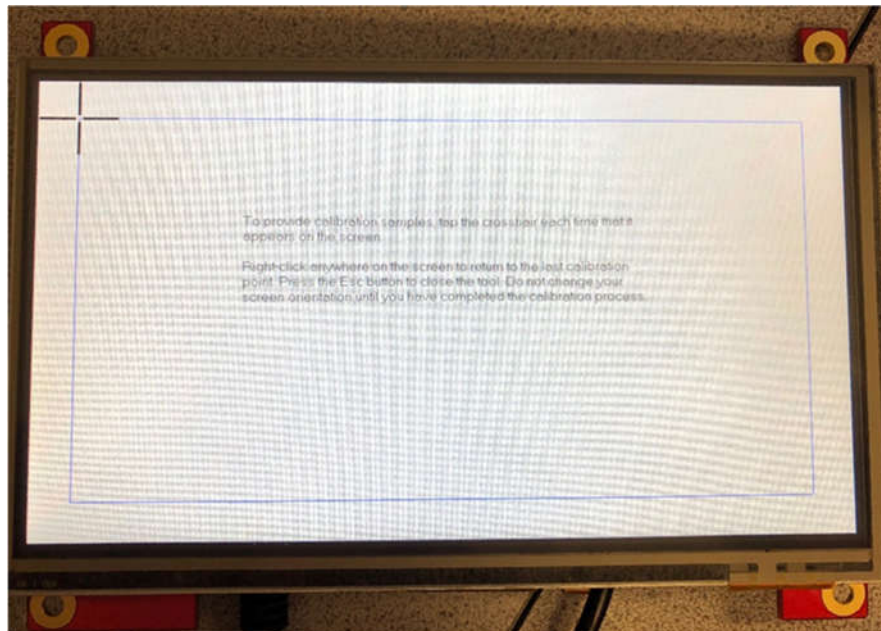


Figure 9. ELI70-CR in Windows 7 Calibration

NOTE: If the ELI option does not allow you to click on **Calibrate...** you may need to use the **Setup...** button to select ELI as your touch input device and you may also need to go to a different option in the **Display** dropdown menu and click the calibrate button on this device first. Hit ESC to exit once calibration starts. The calibration option should now be available on ELI.

11. Once you have finished, click **Yes** to save the calibration permanently.

3. Website and Support

Support:

- FDI Support home page:.....<http://www.teamfdi.com/support>
- FDI Forums: <http://www.teamfdi.com/forum>