

Product Training

RHINO³⁸⁹⁹⁹



Rhino Features & Benefits

PRODUCT
TRAINING

- Circular for high power and high voltage
- High Vibe and low resistance contact system
- Connector based upon proven 38999 technology
 - Milspec plating, 6 keyways, Intermountable, anti-decoupling, EMI Band, 360deg Mating, etc.
- Lowest profile 1000A in the industry (86mm bulkhead to cable exit)
- Includes backshell / locking ring
- Configurable backshell position
- 85A-1000A Capacity & Up to 630V
- Environmentally sealed; IP68 mated & unmated
- Finger proof voltage protection; IP2X
- EMI Filtered Options
- Shell material; Aluminium alloy
- Modular Insert (Stock flexibility)
- RoHS compliant



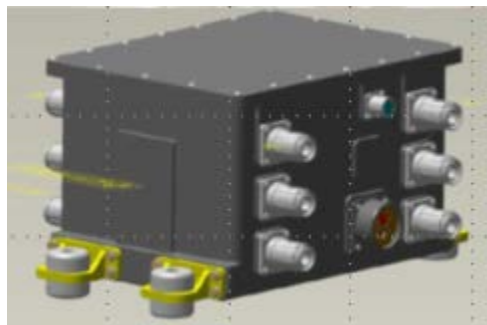
Rhino Key Applications

PRODUCT
TRAINING

Mine Plough (Attachments)



Intelligent Power Management AC/DC



Turret Systems



Ground Vehicles



UGV



Motors



Military Batteries



Product Availability

PRODUCT
TRAINING

Current Capacity

- #13-85A
- #15-120A
- #17-185A
- #21-340A
- #23-500A
- #25-1000A

- Right / Straight Backshells

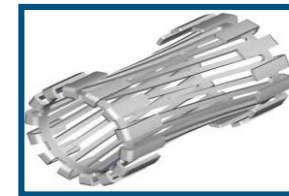
- Plating

- ZN = Black Zinc Nickel
- SS = Stainless Steel
- RB = Aluminium Bronze
- Plus alternative traditional options...

Jam Nut, Wall Mount, In-line and Plug



Low insertion force / Low mating force
RADSOK Contact System



Filtered Options

Value Add Distributors: PEI Inc and TTI
Catalogue: Mouser Electronics

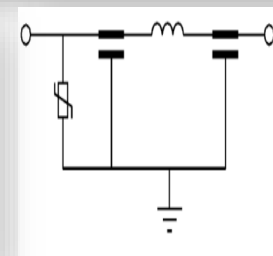
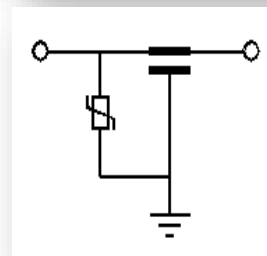
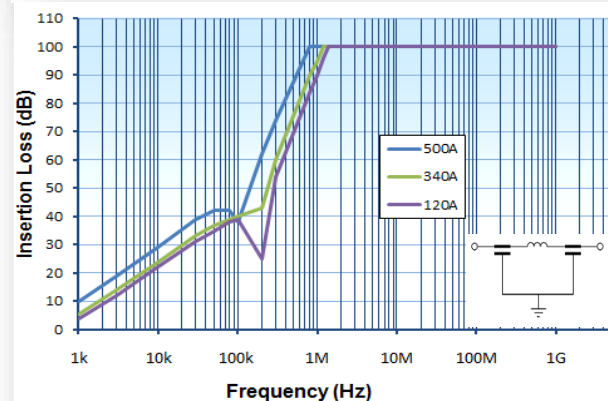
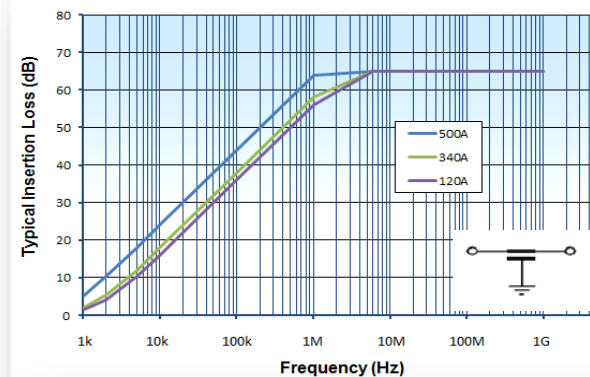
Rhino 38999 Differentiation

Property	ALTD – Rhino	AAO - KVTV	All – EV	AIO - Vortex
Threaded	✓	✓	✓	✗
Bayonet	✗	✗	✓	✓
Push-Pull	✓	✗	✗	✗
Max Amperage	1000A	?	750A	800A
Operating Voltage				2500V DC
Sealing	IP68	IP67	IP67	
Temperature	-55 to +120	-65 to +200	-40 to +90	-40 to +125
Finger Protection	✓	✗	✓	✓
Multipole	✗	✓	✓	✗
Low profile 90°	✓	✗	✗	✗
Bus-Bar Contacts	✓			✓
Plating	Zinc Nickel	Durmalon	Nickel	
Mating Cycles	500	500	500	2000
RoHS	✓	✓	✓	✓
Pricing	✓			



Filtered Rhino Performance

- The Filter Assemblies can be supplied with C or Pi filter circuit configurations, depending on the levels of EMI suppression performance required.
- C= 65dB from 1MHz & Pi =100dB from 1MHz to beyond 1GHz.
- The Filter assemblies also have the option of high-power varistors that provide protection against EMP and lightning strikes.
- The MOV surge arrestor and filter act together to reduce the level of the incoming conducted pulse on the cables
- Surge Arrestor will operate quickly & shunt the energy of the pulse to ground rather than continuing along the cable.
- The Filter element will also attenuate the residual pulse magnitude to a level which will not damage equipment & will block all high frequencies.
- The Filter units are supplied with pin contacts at one end and sockets at the other.



Main Features offered by design:-

- Compact packaging integrates connector and filtering (capacitor) within a single enclosure at a minimum possible size.
- High Insertion Loss Performance levels
- Ease of installation – do not need to fit and connect two separate components
- Reduced installation time – especially in theatre
- Assists manufacturers' platforms & equipments to meet the new MOD GVA Guidelines
- Including.... Turret indexing motors, Generators, Pumps, Crew compartment HVAC, NBC systems, Communications equipment, etc...
- Other Commercial & industrial applications include - harsh environment vehicles, hybrids & electric drive vehicles, aircraft & naval systems, power distribution, satellite communications, etc...



PRODUCT TRAINING

-
- Technical drawing of a 400W, 24V LED light fixture. The drawing includes a top view with dimensions (100mm diameter, 100mm height, 100mm width) and a side view showing the internal components. A table below the drawing lists the components and their quantities.
- | ITEM NO. | ITEM NAME | QTY | UNIT | ITEM NO. | ITEM NAME | QTY | UNIT |
|----------|-------------------|-----|------|----------|-------------------|-----|------|
| 1 | LED LIGHT FIXTURE | 1 | PC | 2 | LED LIGHT FIXTURE | 1 | PC |

