



Ideal for tight-packaging applications, fine-pitch SlimStack™ SSB6 board-to-board connectors offer maximum space savings, mating guidance, and secure electrical and mechanical contact for all types of mobile devices

Features and Benefits

Ultra low profile, short length and narrow width	Offers maximum space savings
Dual contact design	Provides secure electrical and mechanical reliability even after repeat cycling
Wide alignment area housing lead-in	Facilitates mating for more efficient operator assembly
Housing canopy cover	Provides an anti-zippering barrier that prevents contact pullout from angled unmating
Contact design with audible and tactile mating features	Provides operators with maximum mating assurance
Wide vacuum pick-and-place area	Accommodates automatic board placement even with narrow width

Markets and Applications

- › Mobile Devices
 - Smart Phones
 - Tablet PCs
 - Portable Audio
 - Portable Navigation Equipment
- › Medical
 - Patient Monitoring
 - Therapeutic and Surgical

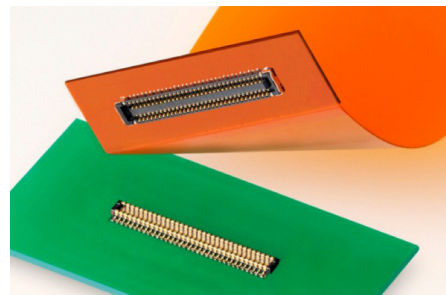


Smart Phone

**SlimStack™ SSB6
Board-to-Board
Connectors, SMT,
0.35mm Pitch,
0.60mm Height,
2.00mm Width**

504618 SSB6 Receptacle

504622 SSB6 Plug



SlimStack SSB6 connectors
(504618 receptacle, top; 504622 plug, bottom)



Medical Equipment

Specifications

REFERENCE INFORMATION

Packaging: Embossed tape
Designed In: Millimeters
RoHS: Yes
Halogen Free: Yes

ELECTRICAL

Voltage (max.): 50V
Current (max.): 0.3A
Contact Resistance:
80 milliohms max.
Dielectric Withstanding Voltage:
250V AC (rms)
Insulation Resistance:
100 Megohm min.

MECHANICAL

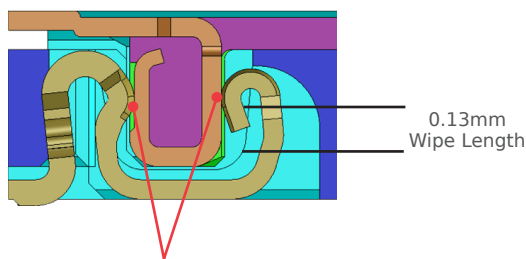
Contact Retention to Housing: 0.15N
Mating Force: 60N max.
Unmating Force: 7.5N min.
Durability (min.): 30 cycles

PHYSICAL

Housing: PBT
Housing: LCP, black
Contact: Copper Alloy
Plating:
Contact Area — Gold
Solder Tail Area — Gold
Underplating — Nickel
Operating Temperature:
-40 to +85°C

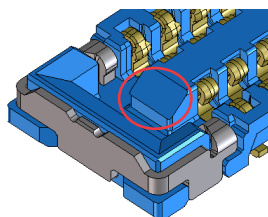
Additional Product Features

Dual Contact Design for Secure Reliability



A dual-contact design provides secure electrical and mechanical contact and prevents open contacts. The 0.13mm wipe length helps to remove dust and debris and provide further contact assurance.

Wide Alignment Area for Easy Mating



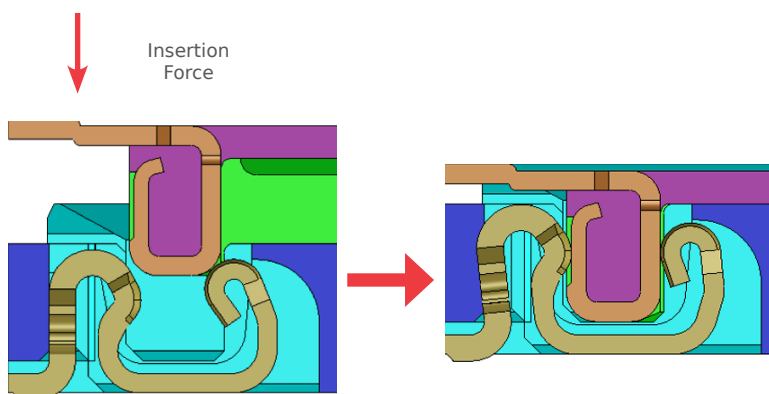
A wide alignment lead-in area has been designed into the SlimStack SSB6 series housing to enable operators to more easily guide the connectors together.

SlimStack™ SSB6
Board-to-Board
Connectors, SMT,
0.35mm Pitch,
0.60mm Height,
2.00mm Width

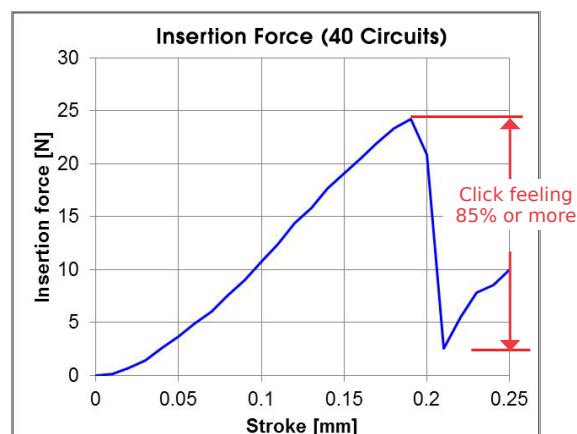
504618 SSB6 Receptacle

504622 SSB6 Plug

Strong Click Feeling



The SlimStack SSB6 series provides a very strong tactile “click” feeling when mated for secure mating assurance.



Ordering Information

Order No.	Type	Circuit Size
504618-5010	PCB Receptacle	50
504622-5010	PCB Plug	