



Product Brief

# **Intel® Core™ Series 3 Processors**

***Power your everyday with  
performance that keeps up.***



Intel® Core™ Series 3 processors are built for seamless performance, smoother AI experiences, and longer battery life<sup>1</sup>, so you can do more without slowing down. Whether you're working, streaming, creating, or connecting, the latest Performance-cores deliver responsive speed, while new Low Power E-cores help extend battery life to keep you going longer.

With built-in AI acceleration, your PC becomes smarter and more efficient. From enhanced digital assistants and generative AI tools to real-time system optimization, everything feels quicker, smoother, and more intuitive.

Plus, support for the latest connectivity standards means you stay fast, reliable, and ready for what's next, at home, at work, or on the move.

# *Performance for Everyday Possibilities*

## *Uplevel AI with Performance-cores & Low Power Efficient-cores*

Experience the best of both worlds, powerful performance when you need it and impressive battery life when you don't. Intel's latest core architecture brings together high-performance cores and energy-efficient cores in one smart processor, so your laptop adapts to what you're doing in real time.

Up to

**2**

Performance-  
cores

Enjoy faster responsiveness for productivity, creativity, streaming, and everyday tasks.

Up to

**4**

Low Power  
Efficient-cores

Get longer battery life while handling background tasks and everyday apps smoothly.

## *Built to Go Further*

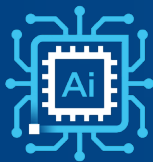
With a smart combination of powerful Performance-cores and Low Power Efficient-cores, Intel® Core™ Series 3 processors help your laptop feel fast and responsive. Designed for modern mobile lifestyles, this latest architecture helps your laptop stay cool, responsive, and efficient throughout the day. Whether you're working, studying, or streaming, you get performance that keeps up, without constantly reaching for the charger.

# AI for Everyday Tasks

Intel® Core™ Series 3 processors bring built-in AI to the mainstream segment for the first time, unlocking smarter everyday experiences.

From improving image quality during video calls to speeding up content creation and productivity, AI works quietly in the background to make everything feel smoother and more responsive.

By intelligently balancing performance and power efficiency, the processor delivers AI that feels natural and fast, helping you get more done without draining your battery.



## Built-in AI Acceleration

Up to  
**40 TOPS**  
of AI performance



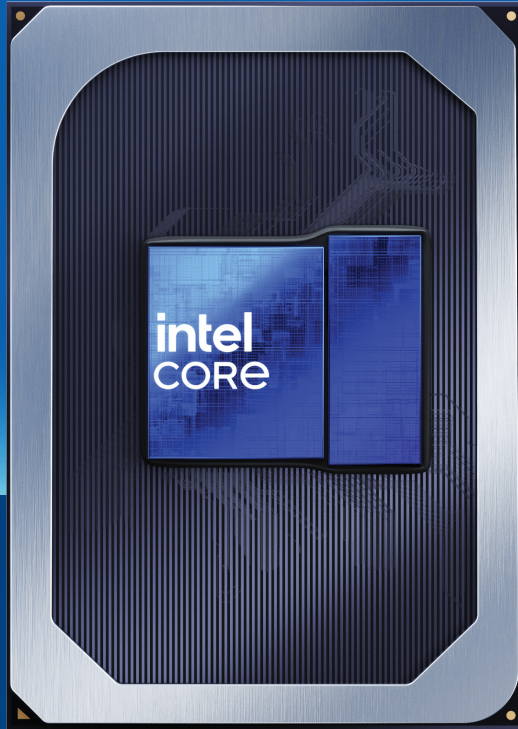
## Handle AI Tasks Efficiently

**Intel® NPU 5**  
architecture



## Huge Ecosystem of AI-powered Applications

Support for  
**250+** apps &  
**400+** AI-optimized features



## ***Graphics That Bring Everything to Life***

With Intel® Graphics, your thin and light laptop delivers smooth visuals for both work and entertainment. From everyday tasks to streaming your favorite content, you get responsive performance in a portable design.

Powered by advanced Intel® Xe media technology, enjoy sharper video playback, faster encoding and decoding, and high-resolution streaming that looks clear and fluid. Whether you're editing content, joining video calls, or relaxing with a movie, visuals stay crisp and seamless.

Need more screen space? The latest display engine supports up to three 4K displays at 60Hz, giving you the flexibility to expand your workspace and manage multiple apps with ease. It's immersive, productive, and designed for how you use your laptop every day.

# ***Smarter Features. Stronger Protection. Better Connectivity.***

Intel® Core™ Series 3 processors power thin and light laptops with the performance, connectivity, and built-in security features you need for today's always-on world. Whether you're working remotely, collaborating online, or managing everyday tasks, you get a dependable experience designed to keep up.

With the integrated Intel® Partner Security Engine, your laptop benefits from hardware-level protection that helps safeguard sensitive data and defend against evolving threats. It is security built into the foundation, so you can work and browse with greater confidence.

For faster, more reliable connections, support for Intel® Wi-Fi 7 (2 Gig)\* delivers higher speeds, lower latency, and smoother performance, even on busy networks. Combined with Bluetooth® Core 6.0, you get stable connections to your favorite wireless devices with improved power efficiency and seamless pairing.

The result is a modern platform built for speed, security, and effortless mobility, wherever your day takes you.

\*Intel® Wi-Fi 7: Wi-Fi 7 is subject to regional availability and operation requires use of Intel® Wi-Fi 7 (5 Gig) products in conjunction with operating systems and routers/APs/Gateways that support Wi-Fi. Learn more at <https://www.intel.com/performance-wireless>.

# Intel® Core™ Series 3 Processors SKUs

Series 3 intel CORE Processor Brand & Number	CPU			Integrated NPU TOPS <sup>3,4</sup>	Integrated GPU			Intel® Platform Eligibility		I/O & Memory					Power	
	Total Cores & Threads	P-core Max Turbo Freq (GHz) <sup>2</sup>	Intel® Smart Cache LLC (MB)		Graphics Brand	Total X <sup>e</sup> Cores	Max Freq (GHz)/ TOPS <sup>3,4</sup>	Intel vPro®	Intel® SIPP	Total Platform PCIe Lanes, CPU PCIe Config	Thunderbolt™ Technology	Wi-Fi, Bluetooth®	Maximum Memory Speed (MT/s) <sup>5</sup>	Maximum Memory Capacity (GB) <sup>5</sup>	Processor Base Power (W)	Maximum Turbo Power (W)
Intel® Core™ 7 Processor 360	6	4.8	6	17		2	2.6/21		Yes							
Intel® Core™ 7 Processor 350	6	4.8	6	17		2	2.6/21		No							
Intel® Core™ 5 Processor 330	6	4.6	6	16		2	2.5/20		Yes							
Intel® Core™ 5 Processor 320	6	4.6	6	16	Intel® Graphics	2	2.5/20	No	No	x6 PCIe Lanes (Gen 4)	Integrated 2x Thunderbolt™ 4	Integrated Wi-Fi 7R2, Bluetooth® 6	LP5/X 7467 DDR5 6400	48GB (LP5/x) 64GB (DDR5)	15	35
Intel® Core™ 5 Processor 315	6	4.4	6	15		2	2.3/18		No							
Intel® Core™ 3 Processor 304	5	4.3	6	15		1	2.3/9		No							

Intel® processor numbers are not a measure of performance. Processor numbers differentiate features within each processor family, not across different processor families. All processors are lead-free (per EU RoHS directive July 2006) and halogen-free (residual amounts of halogens are below the November 2007 proposed IPC/JEDEC J-STD-709 standards). All processors support Intel® Virtualization Technology (Intel® VT-x, VT-d), Intel® Trusted Execution Technology (Intel® TXT), and the Secured-core PC specification. For numbered references, see Notices & Disclaimers section.

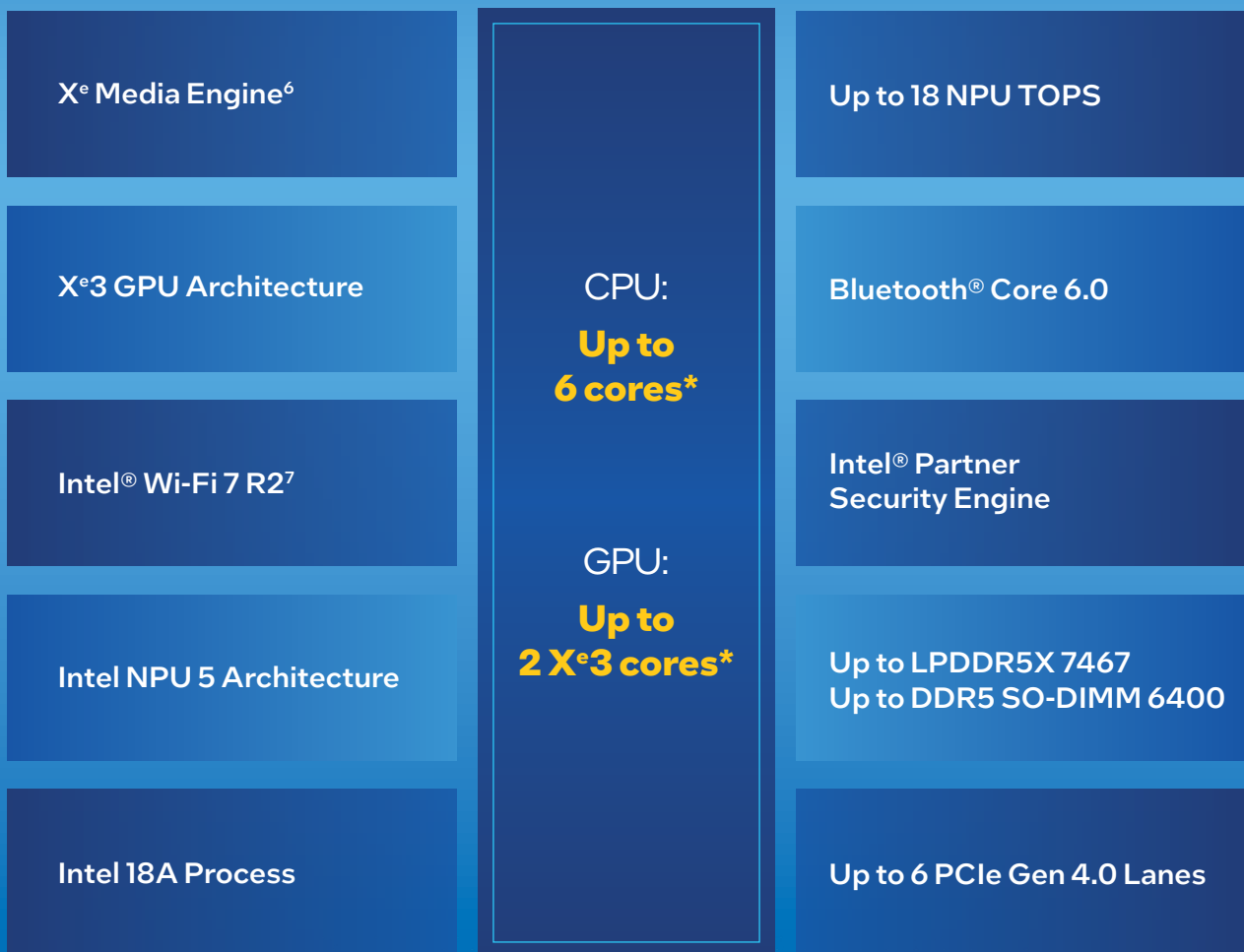
See [ark.intel.com](https://ark.intel.com) for details.

# Features at a Glance

Feature	Benefit
<b>X<sup>e</sup>3 GPU Architecture</b>	X <sup>e</sup> 3 GPU enables faster and more efficient processing for AI workloads and delivers richer graphics with realistic lighting.
<b>NPU 5 Architecture</b>	Intel NPU 5 is designed to handle AI workloads without overloading the CPU or GPU and enables faster and more efficient processing for generative AI.
<b>Intel<sup>®</sup> Graphics</b>	Intel <sup>®</sup> Graphics powers everyday media and display capabilities of mobile systems.
<b>X<sup>e</sup> Media Engine</b>	X <sup>e</sup> Media Engine delivers sharp, high-def video without compromising game graphics.
<b>X<sup>e</sup>3 Display Engine</b>	The X <sup>e</sup> Display Engine is a dedicated hardware block within the X <sup>e</sup> architecture responsible for managing visual output, multi-monitor configurations, and high-resolution pipelines.
<b>Intel<sup>®</sup> Partner Security Engine</b>	Intel <sup>®</sup> Partner Security Engine is a hardware-based security capability designed to help protect data, devices, and user identities at the silicon level.
<b>Intel<sup>®</sup> Wi-Fi 7</b>	Provides a quantum leap in wireless performance from 8K streaming video to immersive VR experiences. Users around the world can enjoy all-new levels of increased speed and reduced latency compared to previous wireless generation products.
<b>Thunderbolt™ Technology</b>	Thunderbolt™ technology offers a best-in-class set of capabilities to deliver the simplest, most reliable, and fastest cable solution available for connecting to power and your favorite accessories.
<b>Bluetooth® Technology</b>	Bluetooth® short-range wireless technology enables two devices to connect directly without requiring supporting network infrastructure such as a wireless router or access point.

# Intel® Core™ Series 3 Processor Overview

## New Features



\*Numbers can vary for specific SKUs.

See [ark.intel.com](https://ark.intel.com) for details.

# Notices & Disclaimers

1. Individual system battery life results will vary significantly with different usages, battery capacity and other OEM design factors. See [intel.com/performanceindex](https://www.intel.com/performanceindex) for details.
2. The frequency of cores and core types varies by workload, power consumption, and other factors. Visit [www.intel.com/technology/turboboost](https://www.intel.com/technology/turboboost) for more information.
3. Neural Processing Unit (NPU) and GPU-based Peak Tera Operations Per Second (PTOPS) is a calculated value based on several assumptions about operating conditions, including but not limited to maximum frequency, data type, and other design and workload parameters.
4. Intel® X<sup>e</sup> Matrix eXtensions (Intel® XM<sup>e</sup>) are specialized AI engines that operate on systolic arrays, resulting in a high value of calculated PTOPS based on assumptions about certain operating conditions that directly benefit in accelerating AI workloads.
5. Maximum memory speeds are associated with board type and DIMM configurations, which may also affect maximum memory capacity. For configuration details, refer to the Wildcat Lake Processor External Design Specification
6. **X<sup>e</sup> Matrix eXtensions:** Intel® X<sup>e</sup> Matrix eXtensions (Intel® XM<sup>e</sup>) are specialized AI engines that operate on systolic arrays, resulting in a high value of calculated PTOPS based on assumptions about certain operating conditions that directly benefit in accelerating AI workloads.
7. **Intel® Wi-Fi 7:** Wi-Fi 7 is subject to regional availability, and operation requires the use of Intel® Wi-Fi 7 (5 Gig) products in conjunction with operating systems and routers/APs/Gateways that support Wi-Fi 7. Learn more at <https://www.intel.com/performance-wireless>.

Performance varies by use, configuration, and other factors. Learn more at [www.intel.com/PerformanceIndex](https://www.intel.com/PerformanceIndex).

AI features may require software purchase, subscription or enablement by a software or platform provider, or may have specific configuration or compatibility requirements. Data latency, cost, and privacy advantages refer to non-cloud-based AI apps. Learn more at [intel.com/AIPC](https://www.intel.com/AIPC).

Performance results are based on testing as of dates shown in configurations and may not reflect all publicly available updates. No product or component can be absolutely secure.

Your costs and results may vary.

Intel technologies may require enabled hardware, software, or service activation.

© Intel Corporation. Intel, the Intel logo, Intel Core, and other Intel marks are trademarks of Intel Corporation or its subsidiaries. Other names and brands may be claimed as the property of others.

