

# Crazyflie-Flow v2 deck

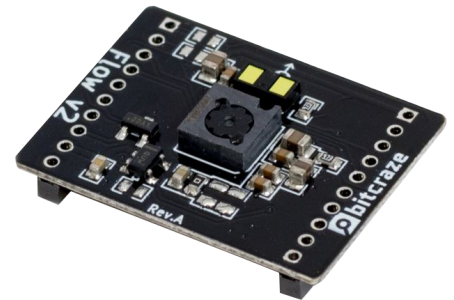
## Product Overview

09/05/2022

For the most up-to-date information, visit [www.mouser.com](http://www.mouser.com) or the supplier's website.

## Description

Seeed Studio Crazyflie-Flow v2 deck is designed to provide the Crazyflie 2.X the ability to detect its motions in any direction. This board features the VL53L1x ToF sensor that measures the distance to the ground with high precision. The PMW3901 optical flow sensor measures movements of the ground. This creates a flying 3D robot that can be pre-programmed to fly distances in any direction or act as an aid for beginners as it creates a very stable flying platform. The Crazyflie-Flow v2 deck board measures absolute range up to 4m and is available in 21mm x 28mm x 4mm dimensions.



## Features

- Fast and accurate distance ranging
- Measures absolute range up to 4m
- Eye-safe
- Measures horizontal movement
- Creates a 3D robot that can be pre-programmed
- Aided flight

## Specifications

- VL53L1x ToF sensor to measure distance up to 4 meters within a few millimeters (depending on surface and light conditions)
- 1-wire memory for automatic expansion deck detection
- PMW3901 optical flow sensor (works best on matt surfaces)
- Mechanical specifications
- Weight: 1.6g
- Size (WxHxD): 21x28x4mm
- Designed for mounting under the Crazyflie 2.X

## Mouser Part Number

[View Part](#)

To learn more, visit <https://www.mouser.com/new/seeed-studio/seeed-crazyflie-flow-v2-deck/>