

# LIS331HH Triple Axis Accelerometer Sensor

SEN0411

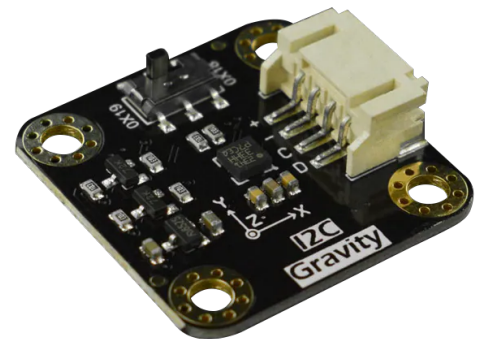
## Product Overview

11/03/2022

For the most up-to-date information, visit [www.mouser.com](http://www.mouser.com) or the supplier's website.

## Description

DFRobot LIS331HH Triple Axis Accelerometer Sensor is a high-performance 3-axis linear accelerometer offering ultra-low power consumption of 10 $\mu$ A. The LIS331HH triple-axis accelerometer sensor gives a 16-bit data output, features an easy-to-use gravity interface, and can change the I<sup>2</sup>C address by the toggle switch. LIS331HH triple-axis accelerometer sensor is ECOPACK, RoHS, and Green compliant.



This sensor comes in user-selectable scales of  $\pm 6g/\pm 12g/\pm 24g$  and is capable of measuring accelerations with 0.5Hz to 1KHz output data rates range. This sensor operates at a 3.3V to 5V voltage range and a -40°C to 85°C temperature range. The applications are in navigation, smart agriculture, robotics, and VR/AR.

## Features

- $\pm 6g/\pm 12g/\pm 24g$  selectable scales
- ECOPACK, RoHS, and "Green" compliant
- I<sup>2</sup>C address:
  - 0 x 19 (Default)
  - 0 x 18 (Optional)
- Change the I<sup>2</sup>C address by the toggle switch
- Easy-to-use gravity interface and no need to solder
- Gravity I<sup>2</sup>C interface

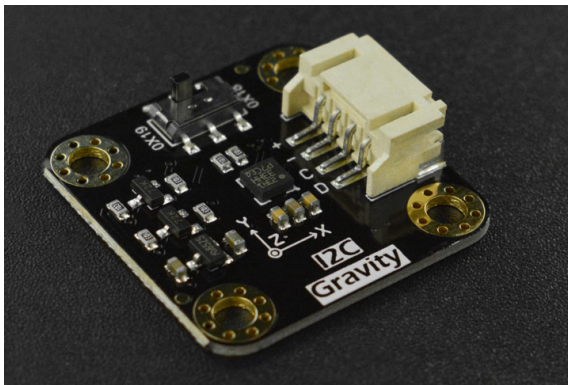
## Specifications

- 3.3V to 5V operating voltage range
- -40°C to 85°C operating temperature range
- 16-bit data output
- 10000g high shock survivability
- 27mm x 27mm dimensions
- Mounting hole size:
  - 3mm inner diameter
  - 6mm outer diameter
- 0.5Hz to 1KHz frequency range
- Selectable scale:
  - $\pm 6g/\pm 12g/\pm 24g$
- Operating current:
  - 10 $\mu$ A (Low power mode)
  - 3 $\mu$ A (Normal mode)

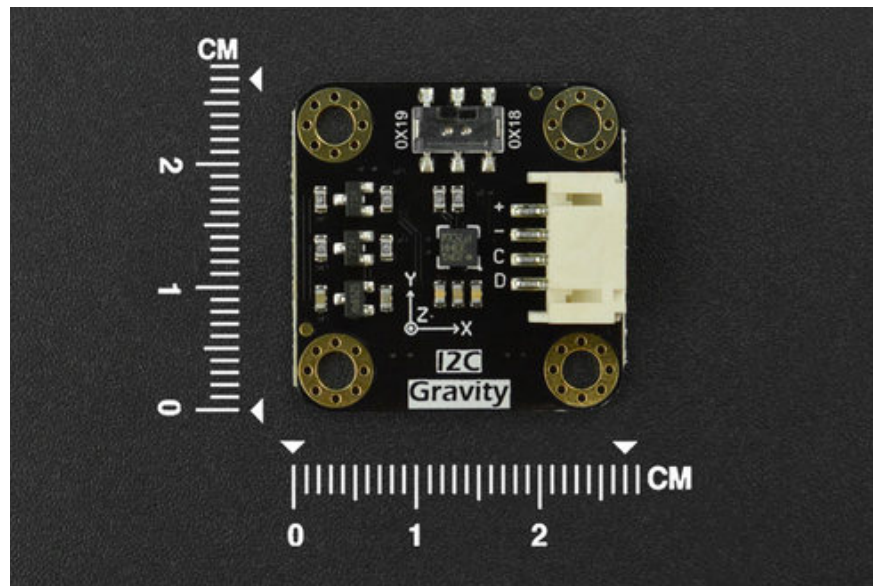
## Applications

- Free-fall detection
- Motion-activated functions
- Gaming and virtual reality input devices

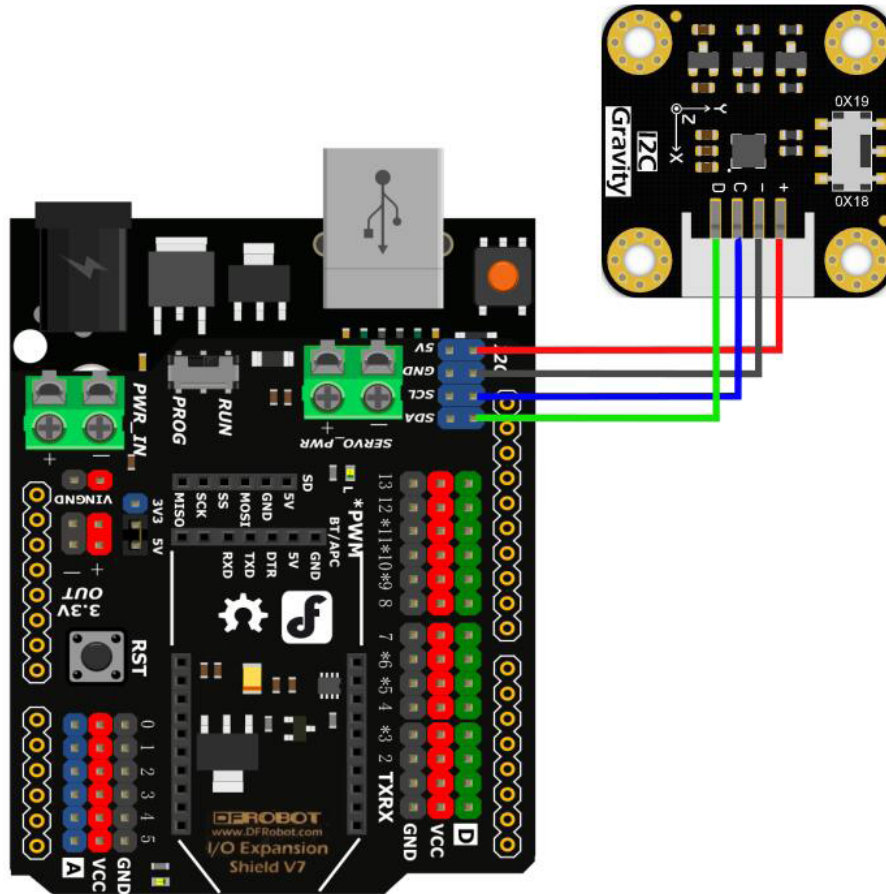
## Sensor Overview



## Board Dimension



## Connection Diagram



## Mouser Part Number

[View Part](#)

To learn more, visit <https://www.mouser.com/new/dfrobot/dfrobot-lis331hh-triple-axis-accelerometer-sensor/>