

3.5" LCD Display Module

DFR0669

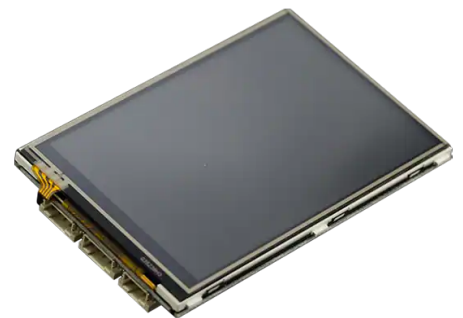
Product Overview

08/05/2022

For the most up-to-date information, visit www.mouser.com or the supplier's website.

Description

DFRobot DFR0669 3.5" LCD Display Module adopts ILI9488 driver chip and integrates GT911 touch chip that supports 5 capacitive touch points. This DFR0669 display module supports SPI (4-wire) communication mode and performs excellently in the angle of view (60/60/60/60). The LCD display module comes in 480 x 320 color pixel resolution and features a capacitive touchscreen display with high-resolution and wide viewing angles. The DFR0669 3.5" LCD module operates from 3.3V to 5V input voltage and is compatible with multiple main controllers like UNO, Leonardo, ESP32, ESP8266, and FireBeetle M0. Typical applications of the DFR0669 display module include IoT controlling devices, game consoles, desktop event notifiers, and touch interfaces.



Kit Contents

- 1 x 3.5" 480x320 TFT LCD capacitive touchscreen
- 1 x 2.54P to 10P single row black pin
- 1 x FPC0.5-18PIN flex flat cable reverse direction 10cm

Features

- Wide-angle of view
- Multiple capacitive touchpoints
- High resolution
- GDI, plug, and play
- Onboard MicroSD card slot

Specifications

- 3.3V to 5.5V operating voltage range
- 120° IPS view angle
- GT911 touch chip

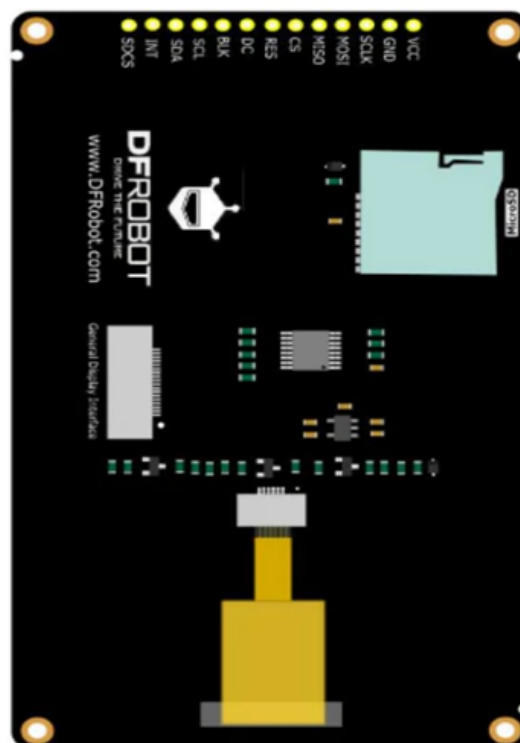
Specifications

- 3.3V to 5.5V operating voltage range
- 120° IPS view angle
- GT911 touch chip
- ILI9488 driver chip
- 300cd/m2 brightness
- -20°C to 70°C operating temperature range
- 73.44mm x 48.96mm display area
- 16-bit (RGB565) color depth
- 480 x 320 pixel
- SPI communication mode
- 300cd/m2 (typical) brightness
- 48.1mA x 5V/3.3V (typical) full-screen consumption
- 55.50mm x 95mm module size
- 2mm mounting hole diameter

Applications

- IoT controlling end
- Game consoles
- Desktop event notifiers

Board Overview



Mouser Part Number

[View Part](#)

To learn more, visit <https://www.mouser.com/new/dfrobot/dfrobot-dfr0669-lcd-display-module/>