

Triple Axis Accelerometer Breakout - BMA400 (Qwiic)

SEN-21208

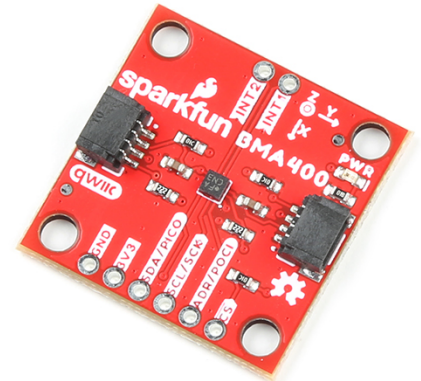
Product Overview

07-09-2024

For the most up-to-date information, visit www.mouser.com or the supplier's website.

Description

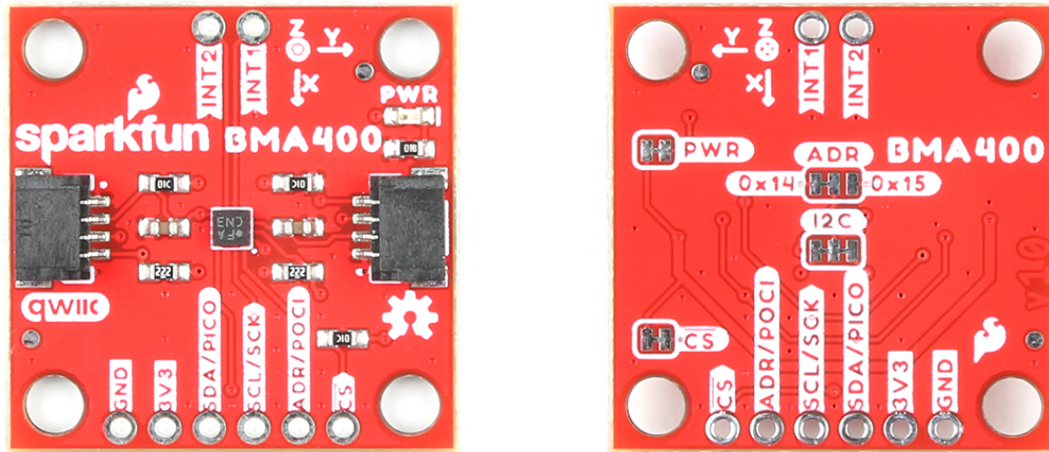
SparkFun Triple Axis Accelerometer Breakout (BMA400) offers a 3-axis acceleration sensor for ultra-low-power applications on an easy-to-use Qwiic breakout board. This triple-axis accelerometer breakout distinguishes between critical situations and false signals by avoiding false alarms. The Qwiic breakout also includes 0.1" spaced PTH pins connected to the sensor's communication interface and interrupt pins for applications that require a traditional soldered connection. This accelerometer includes a complete feature set for on-chip interrupts, including auto wakeup/low power, step counter, activity recognition, orientation detection, and tap/double tap.



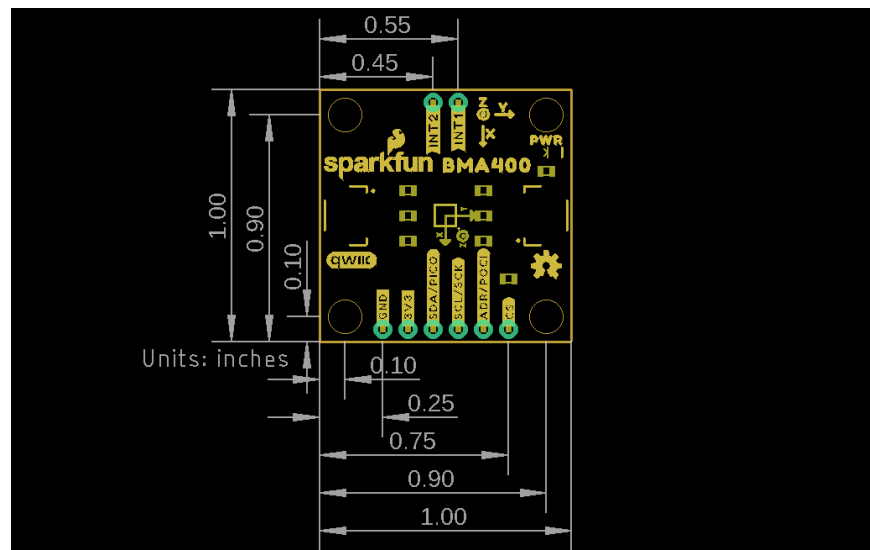
Features

- 1.72V to 3.6V supply voltage range
- <14.5µA low current consumption at highest performance settings
- I²C interface (Qwiic-enabled)
- SPI interface (disabled by default)
- 0x14 (Default) and 0x15 I²C addresses
- ±2g/±4g/±8g/±16g selectable acceleration ranges
- On-chip interrupt features:
 - Auto-low power/auto wake-up
 - Step counter
 - Activity recognition (walking, running, and standing still)
 - Motion detection
 - Orientation detection
 - Tap/double tap
- Output data rate range:
 - 12.5Hz to 800Hz (normal mode)
 - 25Hz (low-power mode)
- 2x Qwiic horizontal connectors

Board Overview



Board Dimension



Additional Resource

- [Schematic Representation](#)

Mouser Part Number

[View Part](#)

To learn more, visit <https://www.mouser.com/new/sparkfun/sparkfun-triple-axis-breakout/>