

XBee Explorer Serial

WRL-13225

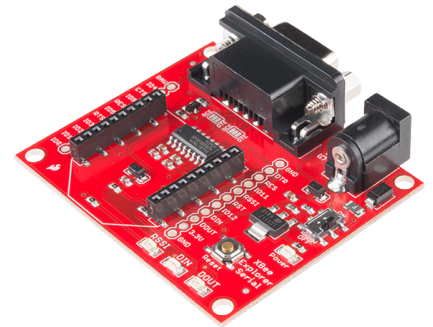
Product Overview

05-27-2022

For the most up-to-date information, visit www.mouser.com or the supplier's website.

Description

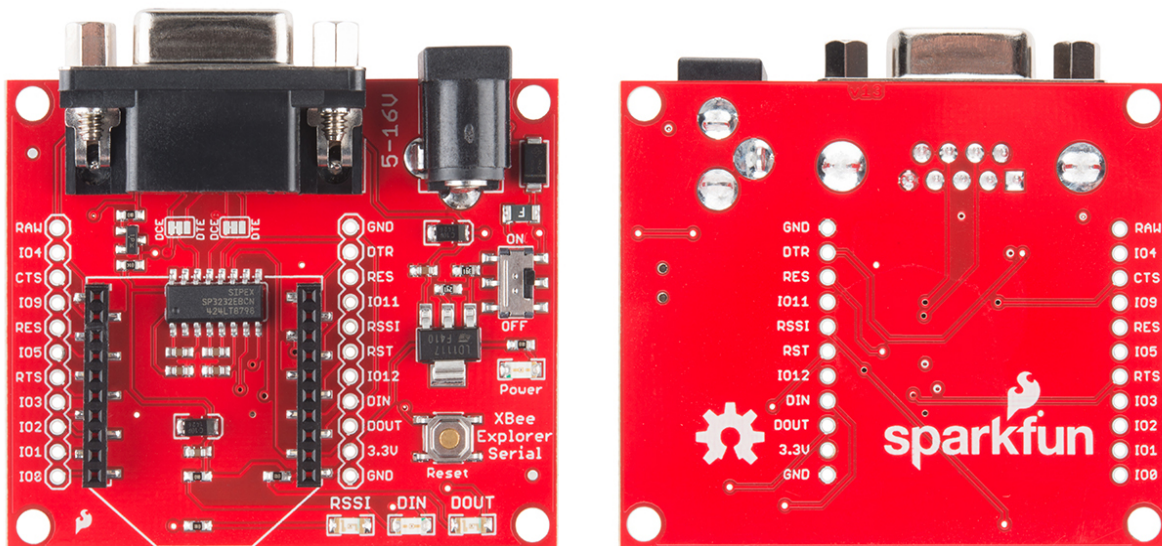
SparkFun WRL-13225 XBee Explorer Serial is a simple-to-use RS232-to-Serial base unit for the XBee line. This device works with all XBee modules that include Series 1 and Series 2.5, standard, and Pro versions. The XBee Explorer Serial is plugged into the XBee Explorer and an RS232 cable is attached to obtain direct access to serial programming pins on the XBee unit. This board also supports Data Terminal Ready (DTR) communication so that the XBee unit can be reprogrammed and configured.



Features

- RS232 to serial base unit for the XBee line
- Works with all XBee modules:
 - Series 1 and Series 2.5
 - Standard and Pro version
- Supports DTR communication

Board Overview



Mouser Part Number

[View Part](#)

To learn more, visit <https://www.mouser.com/new/sparkfun/sparkfun-xbee-explorer-serial/>