

AST-CAN485 Development Board

DEV-14483

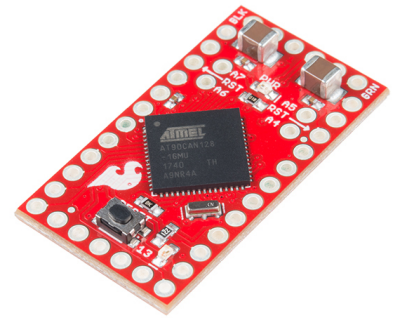
Product Overview

05-17-2022

For the most up-to-date information, visit www.mouser.com or the supplier's website.

Description

SparkFun AST-CAN485 Development Board is a miniature Arduino in the compact form factor of the pro mini. This board is based on the Atmel AT90CAN128 processor, and the processor runs at 16MHz and has 128kB of flash and 4kB of SRAM. The AST-CAN485 development board possesses an onboard Control Area Network (CAN) and RS485 ports, enabling quick and easy interfacing to a multitude of industrial devices. This board supports the Arduino IDE and Arduino core libraries and is installed using the Arduino boards manager.



The AST-CAN485 development board features an onboard regulator which allows an unregulated input voltage to be supplied on the V_{IN} pin to make the allowable 7V to 16V input voltage range. This board also features a 16MHz clock, 2 UARTs, 16 digital I/Os, and D13 LEDs. The AST-CAN485 development board is used in automation, industrial systems, building management, automotive systems, and OBDII applications.

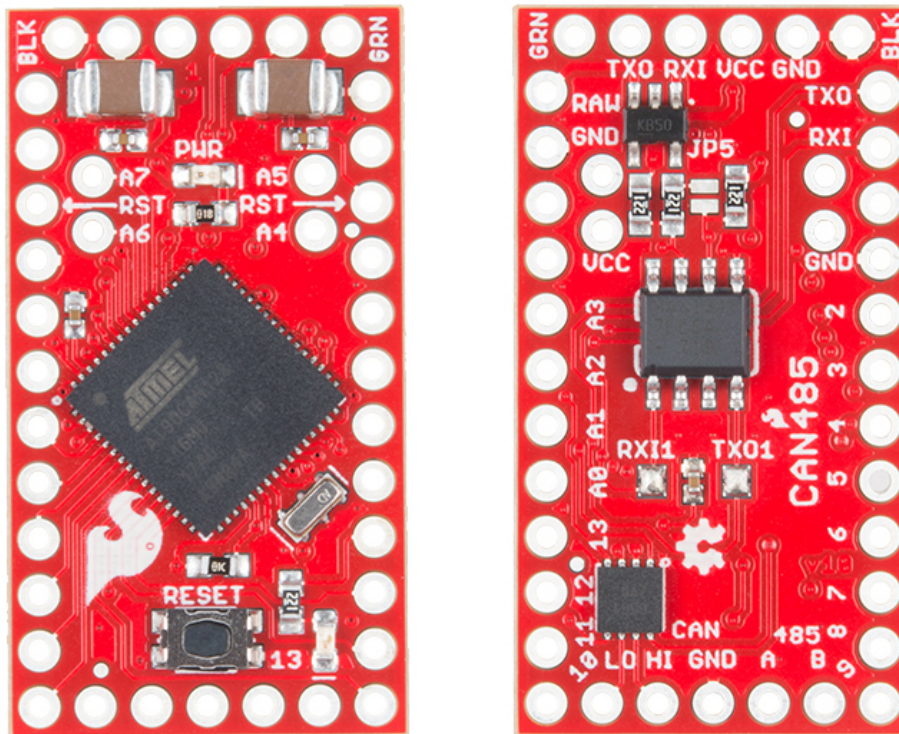
Features

- Uses the AT90CAN microcontroller
- 16MHz clock
- 2 UARTs
- 8 analog inputs
- 16 digital I/Os
- 5V to 16V DC input voltage range (150mA maximum current)
- RS485 transceiver
- CAN transceiver
- Pro mini form factor
- Works with Arduino
- Onboard power and D13 LEDs

Applications

- Automation
- Industrial systems
- Building management
- Automotive systems
- OBDII

Board Overview



Mouser Part Number

[View Part](#)

To learn more, visit <https://www.mouser.com/new/sparkfun/sparkfun-astcan485-devboard/>