

# BeagleBone Black Industrial

102110423

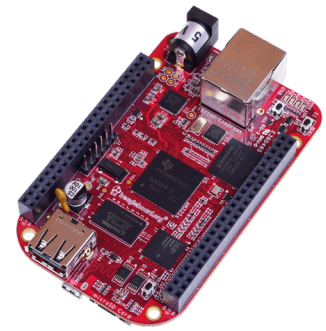
## Product Overview

08/17/2022

For the most up-to-date information, visit [www.mouser.com](http://www.mouser.com) or the supplier's website.

## Description

Seeed Studio BeagleBone Black Industrial is designed to provide an industrial rated Single Board Computer (SBC) with an extended temperature range. This board features an AM335x 1GHz Arm® Cortex-A8 processor, 3D graphics accelerator, NEON floating-point accelerator, and two PRU 32-bit microcontrollers. The BeagleBone Black industrial offers software compatibility with Debian, Android, Ubuntu, and Cloud9 IDE on Node.js with BoneScript library. This board offers various connectivity options including USB client for power and communications, a USB host, Ethernet, and two 46-pin headers.



## Features

- AM335x 1GHz Arm® Cortex-A8 processor
- 512MB DDR3 RAM
- 4GB 8-bit eMMC onboard flash storage
- 3D graphics accelerator
- NEON floating-point accelerator
- 2x PRU 32-bit microcontrollers
- -40°C to 85°C operating temperature range
- Software compatibility:
  - Debian
  - Android
  - Ubuntu
  - Cloud9 IDE on Node.js with BoneScript library
- Connectivity:
  - USB client for power and communications
  - USB host
  - Ethernet
  - 2x 46-pin headers

## Mouser Part Number

[View Part](#)

To learn more, visit <https://www.mouser.com/new/seeed-studio/seeed-beaglebone-black-industrial/>