

0.96" 160 x 80 Color SPI TFT Display

DFR0847

Product Overview

01-13-2023

For the most up-to-date information, visit www.mouser.com or the supplier's website.

Description

DFRobot 0.96" 160 x 80 Color SPI TFT Display employs an edge-to-edge design and offers a 160 x 80HD 16-bit color display. This display supports the DFRobot GDI display interface and can be conveniently connected to a GDI main-controller with FPC, plug and play, and is easy to wire. The DFR0847 TFT display is suitable for wearable projects, mobile devices, and smart home products.



The DFR0847 display is compatible with 3.3V to 5V operating voltage range and has a current consumption of less than 15mA in full-screen. This TFT display works well with controllers like Arduino UNO, Leonardo, ESP32, ESP8266, FireBeetle M0, etc.

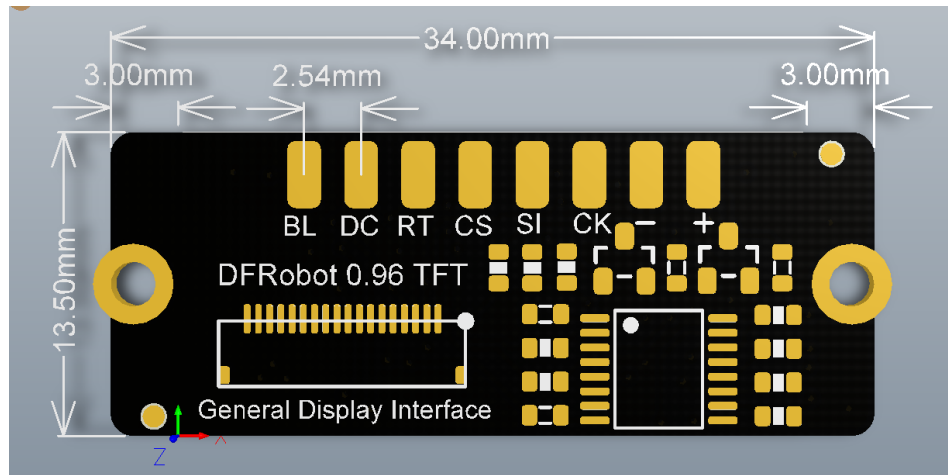
Features

- TFT material with the better display effect
- GDI interface with no soldering required
- Narrower PCB helps in easy integration into small projects

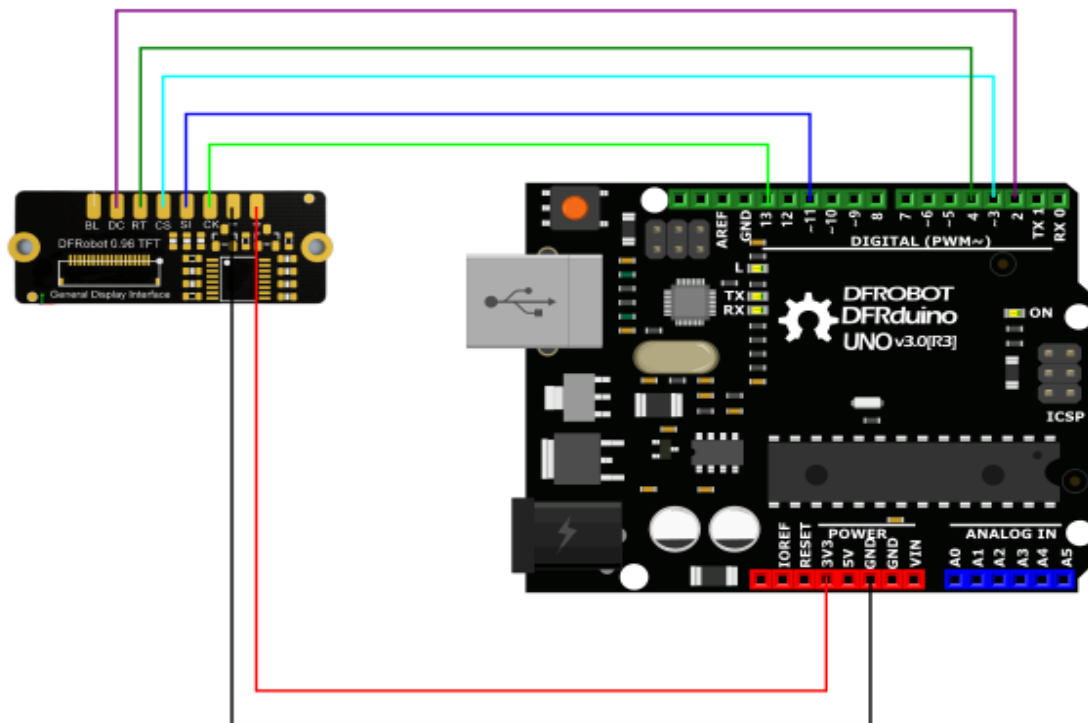
Specifications

- 3.3V - 5V operating voltage range
- IPS viewing angles of 60/ 60/ 60/ 60
- Color depth of 16-bit (RGB565)
- 160 x 80 pixels
- SPI interface
- ST7735 driver chip
- 250cd/m² Luminance (typical)
- 15mA of power consumption in full screen
- -30°C ~ +70°C operating temperature range
- 10.8mm x 21.7mm/ 0.43" x 0.85" display area
- 13.5mm x 34mm/ 0.53" x 1.34" dimensions

Board Overview



Arduino Connection Diagram



Mouser Part Number

[View Part](#)

To learn more, visit <https://www.mouser.com/new/dfrobot/dfrobot-tft-display/>