

DFRobot DFR0665 2.8" TFT LCD Touchscreen Display

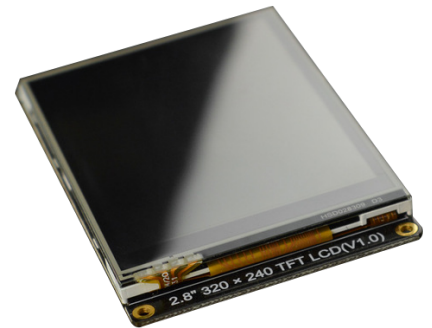
Product Overview

07-08-2022

For the most up-to-date information, visit www.mouser.com or the supplier's website.

Description

DFRobot DFR0665 2.8" TFT LCD Touchscreen Display with MicroSD Card features a wide viewing angle, simple wiring, and high resolution. This module adopts the ILI9341 driver chip and comes with 320 x 240 color pixels and integrates XPT2046 support resistive touch. This TFT LCD touchscreen display adopts SPI (4-line) communication mode that performs well in the angle view(60/60/60). This display is suitable for warning, sensor monitoring, controller display, 3D displays or flash, and an in-touch interface.



Features

- Wide-angle of view
- Resistive touchscreen
- High resolution
- GDI interface, plug, and play
- Onboard microSD card slot

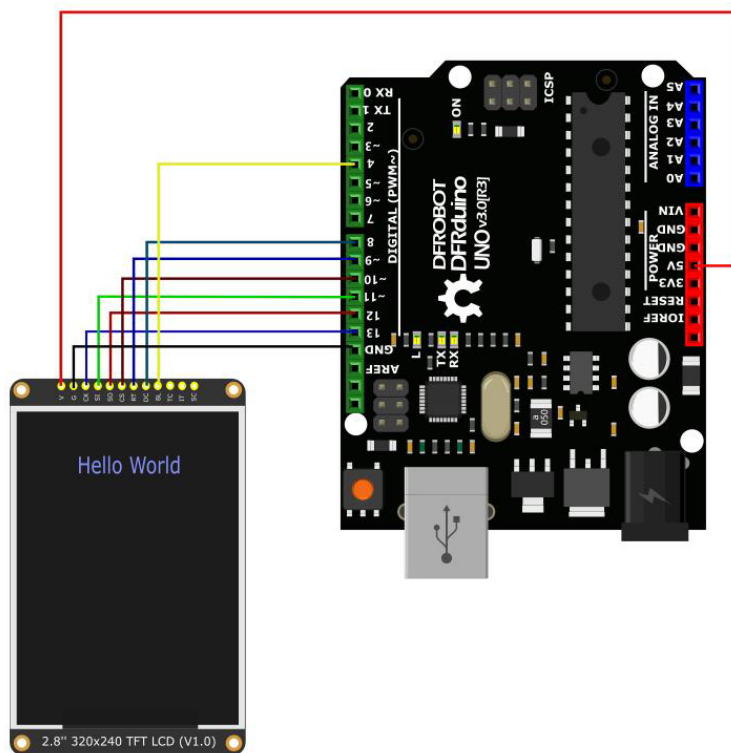
Specifications

- 3.3V to 5.5V operating voltage range
- 16-bit color depth (RGB565) display color
- ILI9341 driver chip
- XPT2046 touch chip
- 320x240 pixel
- SPI communication mode
- 300 (TYP) brightness (cd/m2)
- 43.5mA current consumption
- 57.60mm x 43.20mm/2.27" x 1.70" display area
- 80.00mm x 50.00mm/3.15" x 1.97" module dimension
- 2mm mounting hole diameter
- -10°C to 60°C operating temperature range

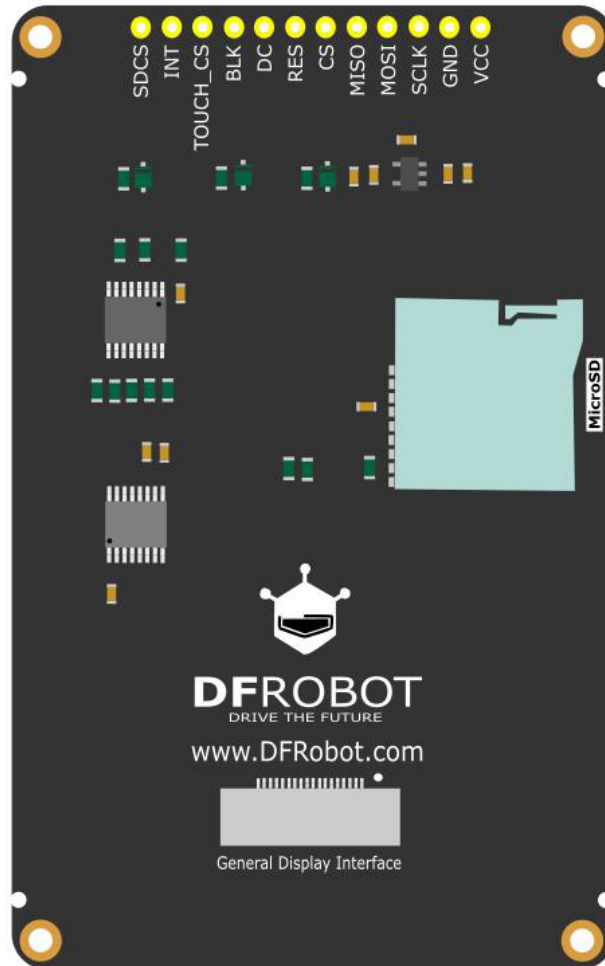
Applications

- Sensor monitoring and warning
- Controller display
- Flash or 3D display
- Touch interface

Connection Diagram



Board Overview



Mouser Part Number

[View Part](#)

To learn more, visit <https://www.mouser.in/new/dfrobot/dfrobot-dfr0665-lcd-display/>