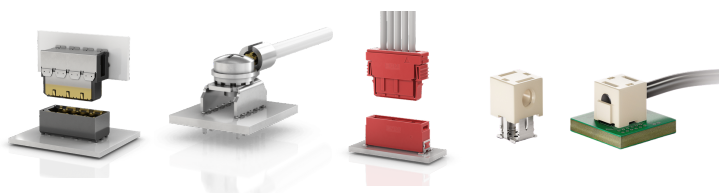


Power Connectors



**Linking electronics to
their power source**

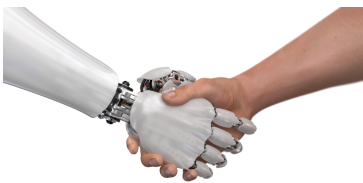
All electronics require power, lights, instruments, recording equipment and more. Modern electronics may even require energy to be converted from one state to another prior to consumption. Examples include inverters for hybrid engines powering vehicles, e-bikes, and autonomous tractors as well as those that serve to convert DC solar energy to AC for consumption by utility grid use.

ERNI has several miniaturized power interconnect solutions that support both conditions mentioned above. These solutions include the 2 mm iBridge Ultra that carries 8A per contact, MaxiBridge with 2.54mm pitch and 12A per contact as well as Power Elements, with varying termination sizes, can handle up to 500A per contact. For more information on ERNI's power selections, please visit our Power Connectors page.

Learn more about ERNI's connectors by exploring the Product Selector Guide.

Why ERNI?

ERNI Electronics connectors are designed and manufactured to exacting requirements. We incorporate dual beam female contacts for maximum connectivity and have a variety of options and accessories for our product lines. When you use ERNI power connectors, you can rest assured the power will indeed be delivered.



MaxiBridge, a wire to board solution with a 2.54mm pitch and 12A per contact, is an excellent combination for small format applications such as robotics.



MiniBridge, another wire to board solution but with a 1.27mm pitch, is just right for autonomous aerials as it delivers 8.7A per contact.



Modern electric vehicles need high power interconnects that can deliver in harsh, high temperature environments. ERNI's Power Elements with up to 500A, as well as MaxiBridge with 12A and iBridge Ultra with 8A are all proven choices.



LED lights are used in a number of applications and each has their own power needs. Military lights with high power LED's chose MicroSpeed Power Module with a current rating of 18A per contact. Automotive chooses MaxiBridge with the low z-height and 12A per contact. In-line manufacturing lighting is powered by SMC with a 1.27 pitch and 1.7A per contact while light panels/bars power needs are met by MiniBridge cable assemblies with 8.7A current rating.

Learn more about ERNI Power Connectors