

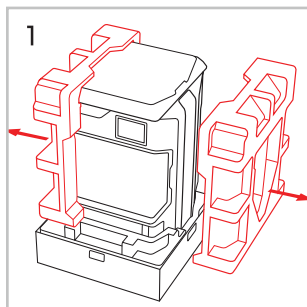
UNBOXING

NEED HELP?

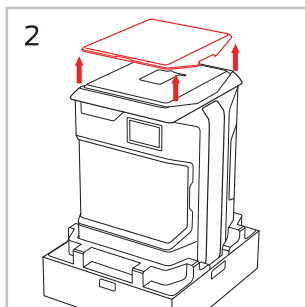
US/CAN Call: **+1 925.529.8563** Mon - Fri 9am – 6pm ET

Or Visit: **Support.MakerBot.com**

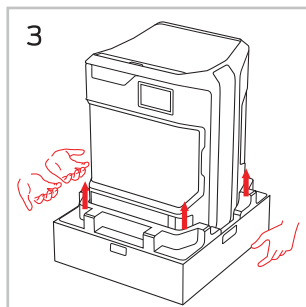
International: **MakerBot.com/Service-Partners**



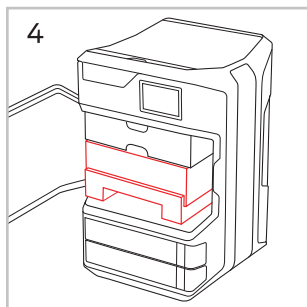
Carefully remove the foam from the sides of the printer.



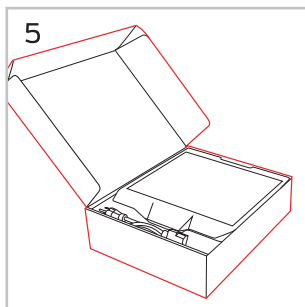
Lift the lid off and store nearby. Remove top packaging foam.



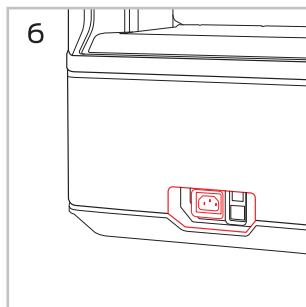
With two people lift from the side handles of the printer and put it on a stable flat surface.



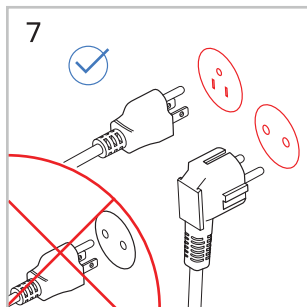
Remove the bag, remaining packaging tape, and open the door to remove the starter kit.



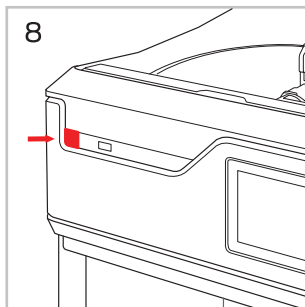
Open the starter kit on a flat surface.



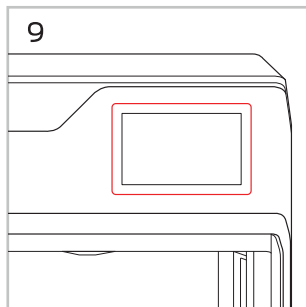
Locate the power input on the lower back of the printer.



Use the correct power cord to connect the printer to an accessible outlet.



Press the power button on the front of the printer.



After the printer powers on, follow the on screen instructions to finish setting up your printer.



QUICK START GUIDE

Download the user manual for your MakerBot® Method™ 3D Printer and make sure to read all safety information before operation. Visit support.MakerBot.com for manuals and troubleshooting guides.

CAUTION: Never remove the Performance Extruders from your MakerBot Method 3D Printer during or immediately after printing. Always allow the Performance Extruders to cool to 50° C before handling them.
PATENT.MAKERBOT.COM/PATENTS