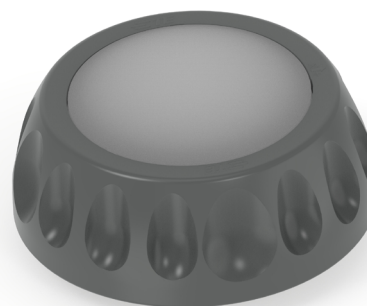


INTRODUCING LUMAWISE MOTION PROGRAMMABLE

Street Lighting Motion Sensor

- Interoperability guaranteed from the Zhaga-D4i logo and certification
- Compact design to keep the aesthetics of modern designed luminaires



The LUMAWISE Motion Programmable motion sensor is designed for streetlighting. Enabling energy savings from dimming the luminaire, while still being able to react to motion and bring a luminaire to full brightness for safety and security reasons. LUMAWISE Motion Programmable motion sensor will fit into the Zhaga-D4i ecosystem, the new standard in smart cities. Working as a standalone control device or in combination with Zhaga-D4i photocell or communication node for greater levels of control.

This programmable version of LUMAWISE Motion sensor allows a user to self-define parameters like brightness levels, on time and ambient light on and off levels.

BENEFITS

- Detected motion will cause a dimmed luminaire to brighten supporting energy savings while still having the safety and security of a lit area
- One handed easy under luminaire connection supports an installer to work below the luminaire

FEATURES

- Programmable version is configurable via the DALI bus
- 30mx6m rectangular detection zone (@5m height)
- Ø10m circular detection zone (@5m height)
- Lighting control of the driver from the D4i communication protocol
- Zhaga-D4i Type B device, with application controller
- Rolling calibration sequence to filter out reflected light from the luminaire
- IP66, IP68 and IK07
- -40°C to 65°C operating temperature range
- -40°C to 32°C functional detection temperature range
- At ambient temperatures greater than 32°C, light output will be switched to 50% brightness

APPLICATIONS

- Street lighting
- Park, recreational and walkway lighting
- Cycle ways
- Station lighting
- High bay lighting

MECHANICAL

- Height: 42.0mm
- Diameter: 79.7mm

MATERIALS

- Dome: HDPE and polycarbonate
- Base: PBT

ELECTRICAL

- 6-8mA average power consumption, 25mA on startup
- Powered from the DALI bus

STANDARDS

- Zhaga book 18 editions 1, 2 and 3, (upcoming edition 4)
- DiiA: parts 351
- IEC 62386: part 303, 101 and 103
- CE and UKCA marked
- UL773
- IEC 61347-1
- IEC 61347-2-11
- Elxon charge code

SPECIFICATIONS

- Application Specification: 114-160511
- Product Specification: [108-160457](#)

LEARN MORE

- [LUMAWISE Motion Product Page](#)
- [LUMAWISE Motion Flyer](#)
- [LUMAWISE Motion Partlist](#)
- [LUMAWISE Motion Images](#)
- [LUMAWISE Motion Product Presentation](#)
- [LUMAWISE Motion Product Video](#)