

PROFICLOUD



PROFICLOUD is a platform for industrial IoT automation and is a prime example of how data can be visualized “in the cloud”. PROFICLOUD offers direct integration with PLCnext Control and can be used to collect, visualize, and store machine and process data securely in the cloud. If more advanced dashboarding or data services are required, other cloud platforms such as AWS and Microsoft Azure can also be used and are supported by Phoenix Contact engineering services for development.



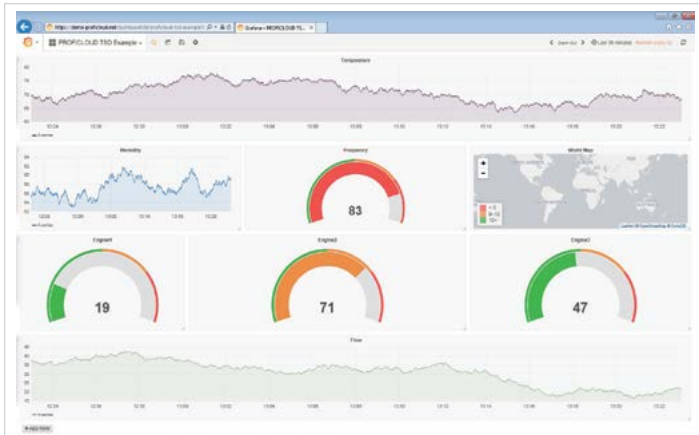
What makes this product unique?

IIoT is a major buzz topic in the industry. PROFICLOUD offers the ability to collect data from traditional control systems and/or PLCnext Control systems and easily reports it to the cloud. While there are other platforms that can provide similar services, PROFICLOUD stands out by displaying data in an attractive format with minimal effort via customizable dashboards for standard applications.

Going along with the PLCnext Technology theme of “open”, customers are not locked into the PROFICLOUD platform. If advanced dashboarding or data services are required, the Phoenix Contact Engineering Services team can create a custom solution on public cloud platforms such as AWS or Microsoft Azure.

Benefits of PROFICLOUD

- Presents simple, customizable, cloud-based dashboards for visualizing data
- Maximum availability with access to data anytime, anywhere in the cloud
- Secure data transfer via TLS encryption
- Simple connection with PLCnext Engineer development software
- Customized cloud services available with Phoenix Contact Engineering Services



www.proficloud.net

USA

Phoenix Contact USA, Inc.

P.O. Box 4100

Harrisburg, PA 17111-0100

Phone: 800-888-7388

717-944-1300

Technical Service: 800-322-3225

Fax: 717-944-1625

E-mail: info@phoenixcon.com

Website: www.phoenixcontact.com

FAQ's

1. What is PROFICLOUD?

PROFICLOUD is a data dashboarding service offered by Phoenix Contact for use with PLCnext Control. The PROFICLOUD service offers an easy way to get data from an application into the cloud for visualization.

2. How do I get a PROFICLOUD account?

Sign up for free at: www.proficloud.net

3. How much does PROFICLOUD cost?

Today, PROFICLOUD is available via pre-release and as a result is free for customer use. In the future, this will be a service with a fee, however, the pricing model is still being defined.

4. Does PROFICLOUD offer data analytics?

No. PROFICLOUD only visualizes current and historical data on a dashboard. Analytics makes decisions or generates reports based on data. If analytics are required, a custom cloud solution will need to be utilized.

5. How do I install PROFICLOUD on my PLCnext Control hardware?

PLCnext Control natively connects to PROFICLOUD directly through the PLCnext Engineer development environment.

A screenshot of the PLCnext Engineer software interface. It shows a 'Variables' table with columns for Name, Type, Usage, Comment, Size, Retain, OPC, HMI, Profile..., and I/O. The table lists several variables under a 'Default' group, including 'xReset_Trans', 'xReset', 'xOperatorKnowledge', and 'xError_SafeCtrl', all of which are Boolean type and have a size of 1. The 'xReset_Trans' variable has a comment 'FALSE' and is marked as 'Retain'.

6. What if I require more functionality than PROFICLOUD can provide?

The Phoenix Contact Engineering Services team can create a custom solution on public cloud platforms such as AWS or Microsoft Azure.