

## Applications



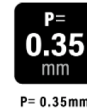
Smartphone



Smart Watches



Wireless Earbuds



P = 0.35 mm

Power / Signal

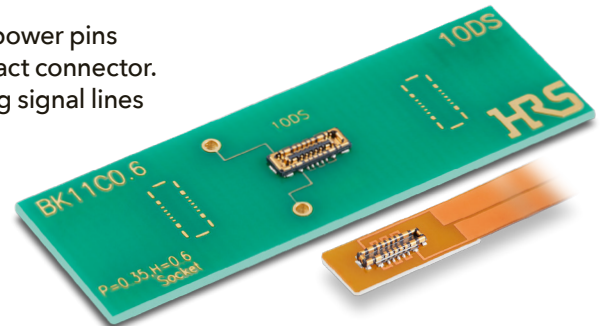
Full Armored

**Introducing Hirose's BK11 Series—an ultra-compact FPC-to-board connector engineered for power and performance in portable electronics. With a 0.35mm pitch, 0.6mm stacking height, and slim 1.9mm width, the BK11 delivers up to 8A total current through a multi-power hybrid layout featuring 2 main power contacts (4A) and 4 sub power contacts (2.5A).**

This structure supports power delivery to multiple modules through a single connector—reducing component count and saving mounting space. Armored metal guides, reinforced solder points, and a tactile click design ensure secure, reliable mating even in compact or vibration-prone devices. Ideal for smartphones, wearables, wireless audio, and other battery-powered products, the BK11 Series offers a robust and space-saving connectivity solution.

### KEY BENEFITS OF THE BK11 SERIES INCLUDE:

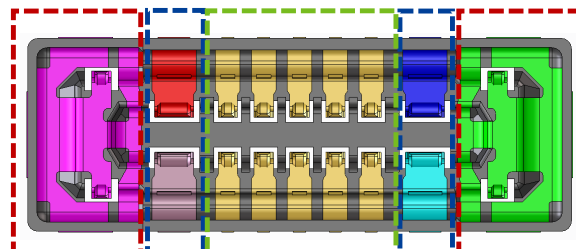
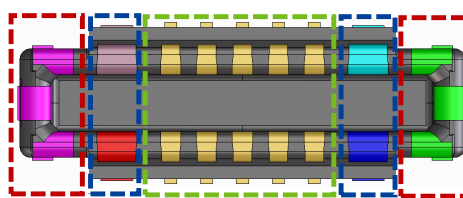
- A hybrid design with multi-power and signal contacts—including 2 main power pins (4A) and 4 sub power pins (2.5A)—supporting up to 8A total in one compact connector.
- Optimized to support multiple modules through one connector—reducing signal lines and saving mounting space on the board.
- A robust structure with fully armored metal guides to prevent housing damage during misalignment.
- Reinforced solder points at each power contact to increase PCB peeling strength and ensure long-term retention.
- Smooth and reliable mating with a wide self-alignment range and a clear tactile click.
- A halogen-free construction that meets IEC 61249-2-21 environmental standards.



## Multi-Power Contact

### Multi-Power Contacts Saves Space

Main Power Contact 4A/pos.      Signal Contact 0.3A/pos.      Sub Power Contact 2.5A/pos.



  : Main Power Contact  
  : Sub Power Contact

**CLICK HERE**  
FOR MORE INFORMATION

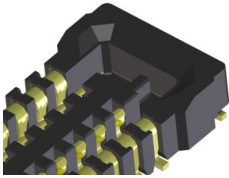
CLICK HERE TO ORDER  
SAMPLE NUMBER:  
US-BK11SAMPLE-25

## Robust Design

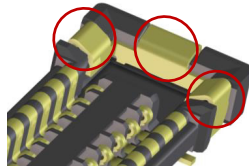
### Comparison of Conventional Versus Full Armored Design

#### Conventional Products

No Metal Covering

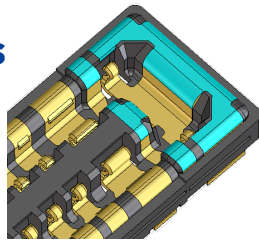


Only partially covered with metal.



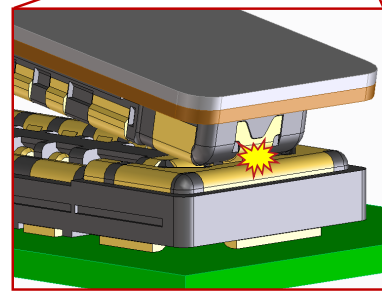
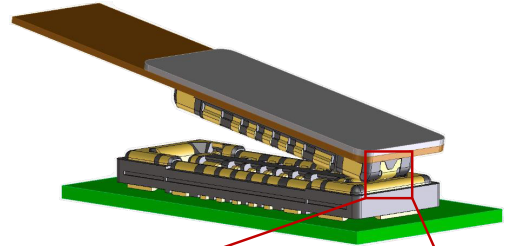
Exposed Housing

#### BK11 Series



Housing is covered by metal

### Fully Armored Design Prevents Housing Damage



## Specifications

### Material/Finish

Component	Material	Finish, Remarks
Housing	LCP*	Black, UL94V -0
Signal Contact	Copper alloy	Gold plated (Nickel Underplated)
Power Contact	Copper alloy	Gold plated (Nickel Underplated)

\*1 This product satisfies halogen free requirements defined as 900ppm maximum chlorine, 900ppm maximum bromine, and 1500ppm maximum total of chlorine and bromine.

### Performance Characteristics

Rated Current	Main Power Contact: 4A/pos. Sub Power Contact: 2.5A/pos. Signal Contact: 0.3A/pos.
Rated Voltage	30V AC/DC
Operating Temperature	-55 to +85° C*2
Contact Resistance	Power Contact : 30mΩ Max. Signal Contact: 50mΩ Max.
Withstanding Voltage	100V AC for 1 min.
Insulation Resistance	50MΩ Min. (100V DC)
Mating Durability	10 times

- No. of Pos.: Signal 10pos.+Power 6pos.

\*2 Includes the temperature rise due to current flow.



For additional information please go to  
[www.hirose.com/product/series/BK11](http://www.hirose.com/product/series/BK11)

Specifications herein are subject to change without notice.  
Contact Hirose for latest specifications, drawings, or availabilities.

STAY CONNECTED

