



New product Release - Q1 2022



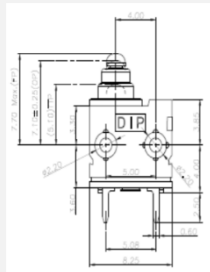
2021/2/21

ESK Snap Action Switch



8.3*5.3x4.0mm

Dimension

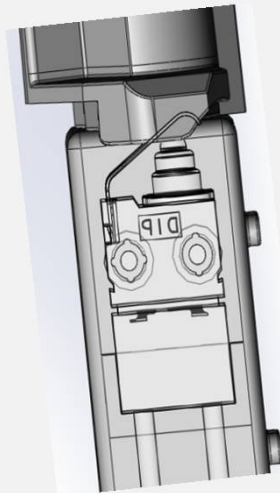


Feature

- Smaller Profile
- Sliding Contact Structure
- High Contact Reliability
- **IP67 Sealed ★**
- Wire Leads available

Application

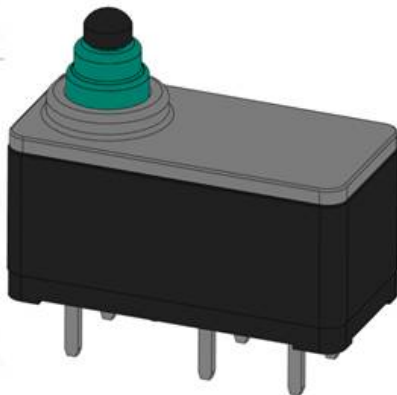
- Motorcycle Handlebar
- Charging system
- Washing Machines
- Vacuum Cleaners
- Door Open/Close Detection



ESH Detector Switch



ESH Detector Switch



• 15.4x7.4x12.2mm

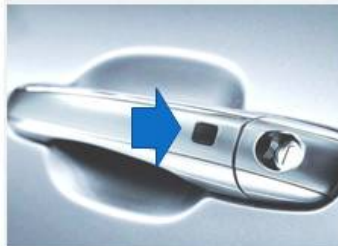


Feature

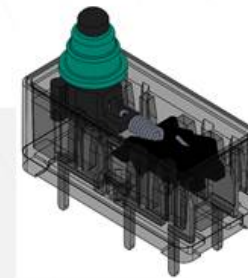
- Two-poles Two-throws
- Water-proof
- Life cycle 300,000

Application

Side door



EPB



SMT

Thru-hole

T6S Tact Switch



T6S Tact Switch



- 6.0x6.6x5.0mm

Feature

- High operating force (3.0N or 3.6N)
- Middle stroke (1.05mm)
- 300,000 operating life cycles

SMT

Application

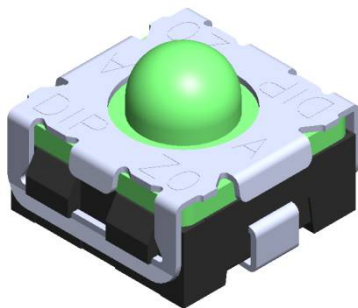
Steering Wheel



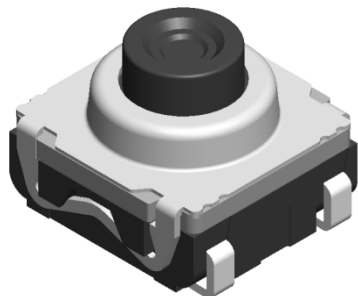
Car Audio



Coming Soon.... Sample available



T5W (5.3x5.4x3.85mm)



T6V (6.2x6.2x4.9mm)

Feature: Sealed IP67, mute, mid-long stroke...



Application

Car light switch control paddle (panel)