

# RS232 Connector Expansion Shield for LattePanda Alpha & Delta

DFR0778

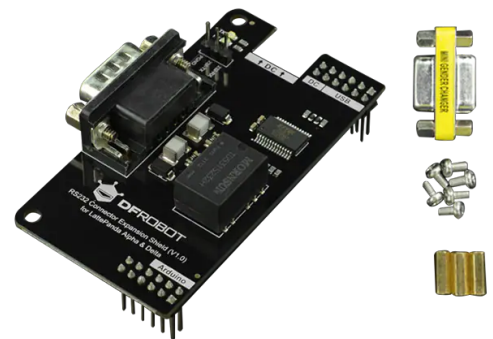
## Product Overview

11/14/2022

For the most up-to-date information, visit [www.mouser.com](http://www.mouser.com) or the supplier's website.

## Description

DFRobot RS232 Connector Expansion Shield is an industrial-grade RS232 shield specially designed to expand one RS232 port (D-Sub, 9Pin, male) with high reliability for LattePanda Alpha, LattePanda Delta, and LattePanda 3 Delta. This expansion shield utilizes FTDI USB to serial port chip and industrial-grade isolated transceiver module. The RS232 connector expansion shield comes with the characteristics of signal isolation, power isolation, lightning and surge protection, transient impulse voltage resistance, and bus protection. This helps in supporting reliable data transmission and can effectively protect the LattePanda mainboard for providing a high-reliability connection for point-to-point.



This RS232 connector expansion shield employs a stackable connection, making it able to be easily fixed onto the LattePanda mainboard by copper columns without blocking the heat dissipation area of the mainboard. Applications include the development and use of industrial-grade RS232 communication on Windows (compatible with Linux).

## Features

- Signal and power isolation
- Reliable transmission
- Easy to connect and use
- No effect on the cooling performance of the mainboard
- DB9 adapter and copper columns and screws

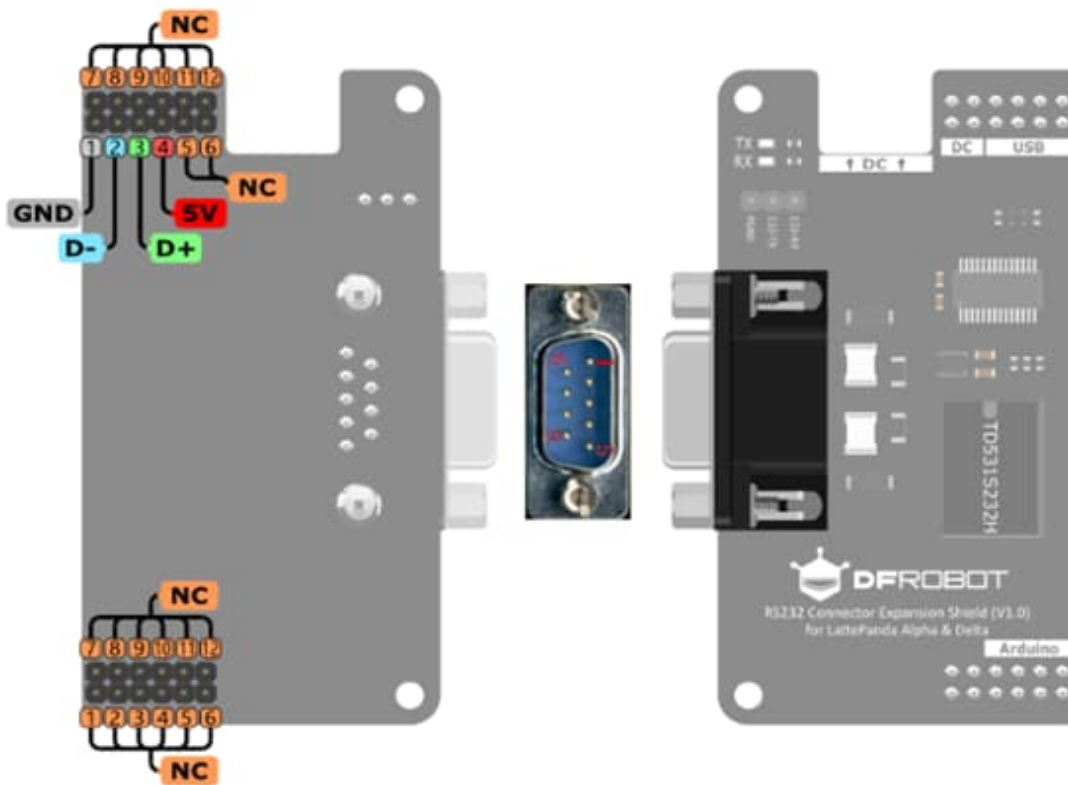
## Kit Contents

- 1x RS232 Connector Expansion Shield for LattePanda Alpha and Delta
- 1x DB9 Adapters female to female
- 3x M3 Double through hexagonal copper column (12mm)
- 6x M3 Round head screws

## Specifications

- 5V operating voltage
- Up to 115200bps communication baud rate
- -40°C to +85°C operating temperature range
- 2500VDC isolation voltage
- EIA/TIA-232-F standard compliant

## Board Overview



## Mouser Part Number

[View Part](#)

To learn more, visit <https://www.mouser.com/new/dfrobot/dfrobot-rs232-connector-expansion-shield/>