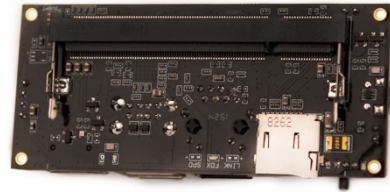
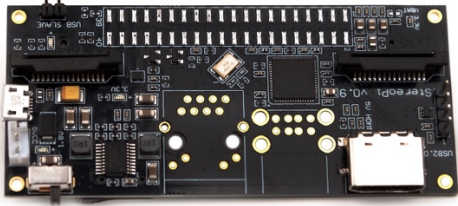


StereoPi Slim Edition



Brief Description

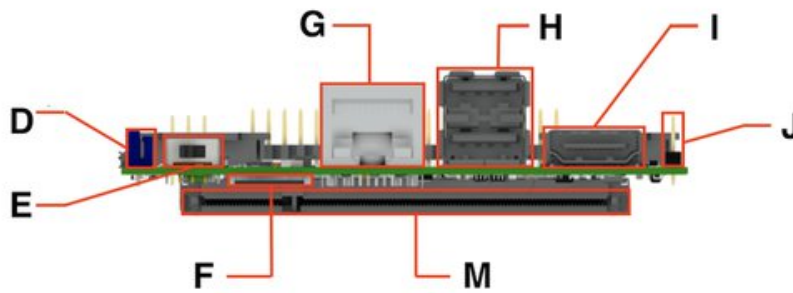
- StereoPi is a carrier board for a Raspberry Pi Compute Module.
- This is an open source stereoscopic camera based on Raspberry Pi. It can capture, save, livestream, and process real-time stereoscopic video and images. StereoPi opens up countless possibilities in robotics, AR/VR, computer vision, drone instrumentation, panoramic video, and more.
- **StereoPi Slim** edition is the same as the standard edition, but without all the bulky connectors - the Ethernet RJ45 jack, GPIO header, and dual USB Type-A connector have not been populated.

Features & Specifications

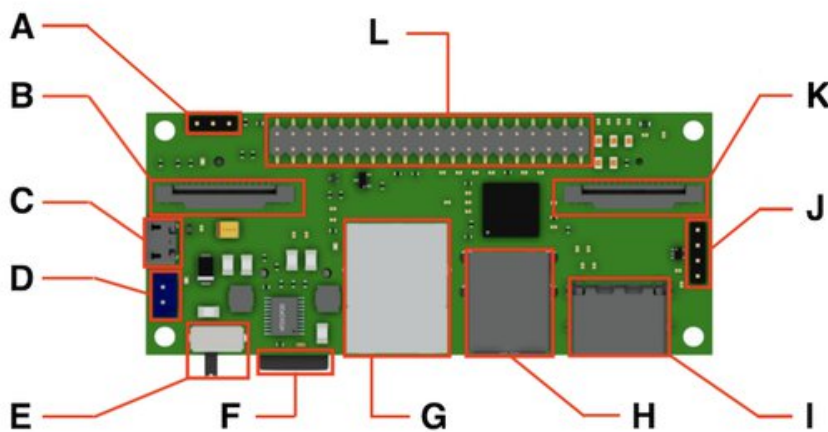
- **Raspberry Pi Compatibility:**
 - Raspberry Pi Compute Module 1 (requires 2nd power mode, check Wiki)
 - Raspberry Pi Compute Module 3
 - Raspberry Pi Compute Module 3 Lite
 - Raspberry Pi Compute Module 3+ 8 GB / 16 GB / 32 GB eMMC flash
 - Raspberry Pi Compute Module 3+ Lite
- **Dimensions:**
 - width x length: 90 mm x 40 mm
 - height: 23 mm (standard edition) / 15 mm (slim edition)
- **Video:**
 - input: two 15-pin CSI-2 camera connectors
 - output: HDMI
- **Camera Support:**
 - Raspberry Pi camera V1 (OV5647 sensor)
 - Raspberry Pi camera V2 (Sony IMX 219 sensor)
 - HDMI video capture module (single mode, on Toshiba TC358743XBG chip)
- **Connectivity:**
 - GPIO: 40-pin classic Raspberry Pi header
 - USB: 2 x USB Type-A, 1 x USB pin header
 - Ethernet: RJ45 jack
- **Storage:**
 - microSD card slot (accessed by Raspberry Pi CM3/3+ Lite)
- **Power:**
 - 5 VDC input via two-pin header
 - manual power switch
- **Software:**
 - firmware update via Micro USB connector
 - runs standard Raspbian

Specific details

StereoPi Standard Edition



Front view



Top view

A. boot mode jumper	H. dual USB Type-A connector Not installed on Slim edition
B. camera 1 CSI-2 connector	I. HDMI out
C. micro USB (for firmware upload)	J. USB port pin header
D. 5 VDC power connector	K. camera 2 CSI-2 connector
E. power switch	L. 40-pin RPi GPIO header Not installed on Slim edition
F. microSD slot	M. RPi Compute SO-DIMM connector
G. RJ45 Ethernet jack Not installed on Slim edition	

Additional information

StereoPi Slim edition is **RoHS 3 Compliant**

Mouser Electronics

Authorized Distributor

Click to View Pricing, Inventory, Delivery & Lifecycle Information:

[Crowd Supply:](#)

[cs-stereopi-01](#)