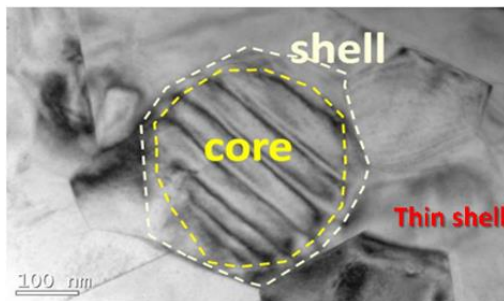


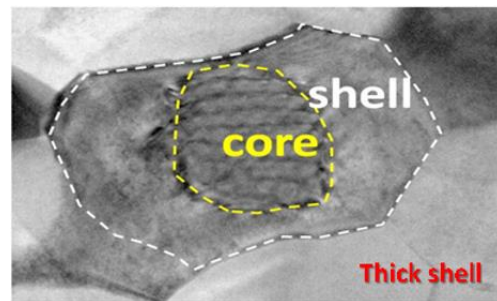
The High Reliability Automotive Grade - AC Series MLCC (Multilayer Ceramic Capacitors)

YAGEO's automotive grade MLCC – AC series is AEC-Q200 qualified to ensure its reliability can approach the goal of zero defects in field applications.

To achieve such a high reliability level, the automotive grade must introduce a different design concept from that of commercial grade. Starting from material design, both microstructure and macrostructure need to be considered at the same time. In class II MLCC, a core-shell microstructure must be optimized,

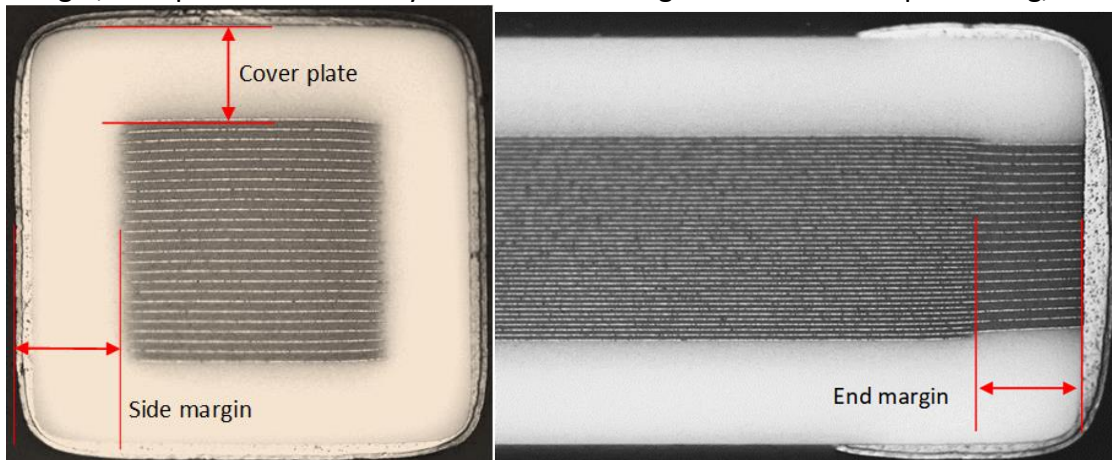


Microstructure design for commercial grade

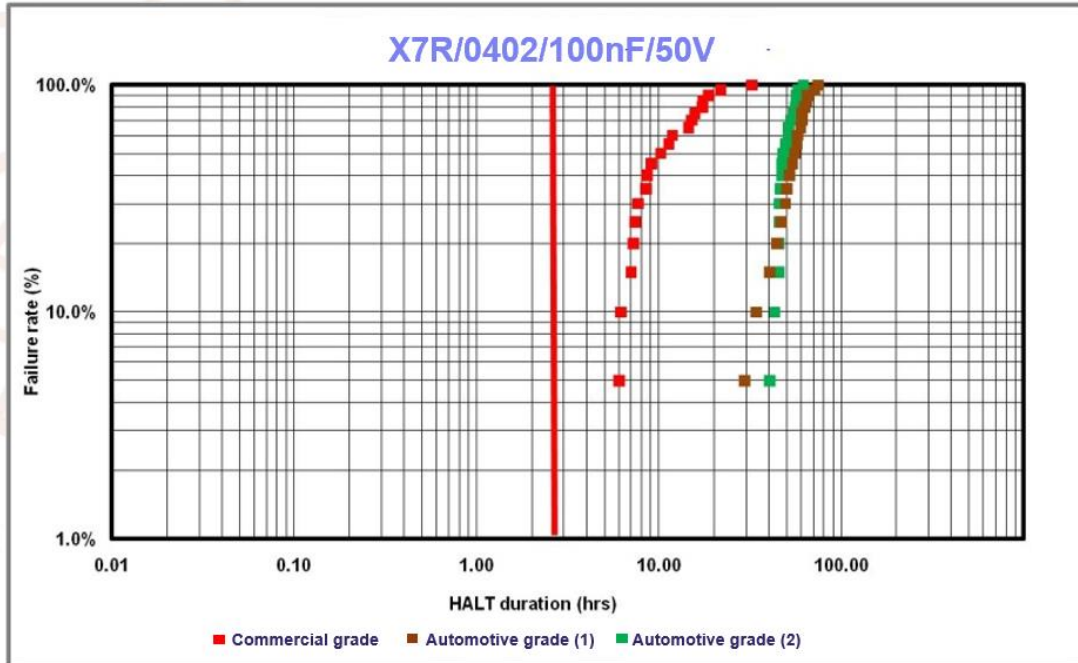


Microstructure design for commercial grade

and the internal constructions, like thicknesses of cover plate, side margin, and end margin, are specified differently from commercial grade. In terms of processing,



tightened engineering specifications and quality inspections are applied to achieve the goal of high reliability.



YAGEO has complete solutions in the field of automotive passive components and can provide high quality products and services to satisfy customers. YAGEO can meet various demands in different applications and will be customers' best partner on the road to success.

Features

1. Temperature characteristics: X5R, X6S, X7R, NPO, X8R, and X8G (NPO with -55°C~150°C)
2. Capacitance range: 0.20pF ~ 10μF
3. ±5% / ±10% capacitance tolerance
4. Case size: 0201 ~ 1812
5. Voltage range: 6.3V ~ 2kV

Benefits:

1. AEC-Q200 qualified
2. IATF 16949 certified
3. Lab management ISO 17025 certified
4. VDA 6.3 and AIAG conformed
5. PPAP readily available
6. Comprehensive product portfolio
7. Sufficient capacity and short lead time

Applications

1. All general-purpose automotive applications
2. Power train and battery management
3. Safety and body electronics
4. Comfort and infotainment