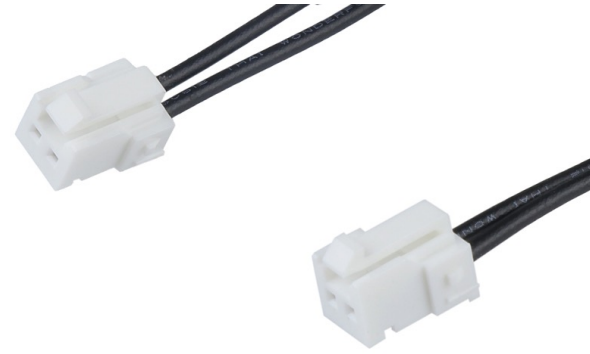


OTS Micro TPA Cable Assemblies >

OTS MicroTPA Cable Assemblies deliver off-the-shelf (OTS) solutions with a broad offering of Molex connectors and a variety of cable lengths to facilitate both prototyping and global production.



FEATURES AND ADVANTAGES

Accepts wide range of wire sizes (22 to 28 AWG)

Applicable cable

Provides ready-to-use, plug-and-play connections

Pin-to-Pin mapping from receptacle to PCB header

Current (max.)	2.5A (22 AWG)
Circuits	2 to 10
Operating Voltage (max.)	250V
Contact Resistance (max.)	20 milliohms
Operating Temperature	-40 to +105°C

Helps to ensure high quality and meets current automotive industry standards

Meets current cable assembly industry standards

Decreases engineering time and resources

Meets 2011/65/EU RoHS Compliance

Provides ease of design, prototyping and production and ready to use in electronic appliance applications

UL 10002 Discrete wires

Withstands harsh environments

RoHS compliant and high temperature capabilities

Helps to ensure availability and wide tooling installation base in market

Uses popular crimp terminals

MARKETS AND APPLICATIONS

Appliances

White goods
Washing machine
Air conditioners
Laser printers
Vacuum cleaners

Automotive

Steering wheel, paddle shift, combination switches
Shifters
Head-, rear-, and side-mirror lights
Internal connection with other units



White Goods



Vacuum Cleaner



Steering Wheel Switches

OTS Micro TPA Cable Assemblies >

SPECIFICATIONS

Reference Information

Packaging: Reel (Terminals); Tray (Header Assembly); Bag (Receptacle Housing)
Designed in: Millimeters
Mates with: MicroTPA Connectors
RoHs: Yes
Low Halogen: Yes

Electrical

Voltage (max.): 250V
Current (max.): 2.5A (22 AWG)
Contact Resistance (max.): 20 milliohms
Dielectric Withstanding Voltage:
1000V AC (1 minute)
Insulation Resistance (min.): 1000 Megohms

Physical

Housing:
Receptacle: PBTP
Plug Housing: PBTP
Header: PA66
Terminal/Pin (plating):
Receptacle: Phosphor Bronze (Pre-Tin)
Plug: Phosphor Bronze (Pre-Tin)
Header Pin: Brass (Pre-Tin)
Operating Temperatures: -40 to +125°C

Mechanical

Crimp Terminal Insertion Force (max.): 9.8N
Crimp Terminal Retention Force (min.): 9.8N
Pin Retention Force (min.): 9.8N
Crimping Strength (min.): 44.1N (22 AWG)
Durability (max.): 30 cycles

ORDERING INFORMATION

Series No	Component	Type	Circuits	Length(mm)
224482	MicroTPA 2 R-R	Single	2 to 10	150.00, 300.00, 600.00
224483	MicroTPA 2 R-S	Single	2 to 10	150.00, 300.00, 600.00

www.molex.com/link/otscableassemblies.com