

FEATURES

- ※For high density mounting
- ※Vertical or side actuation
- ※Reflow solderable

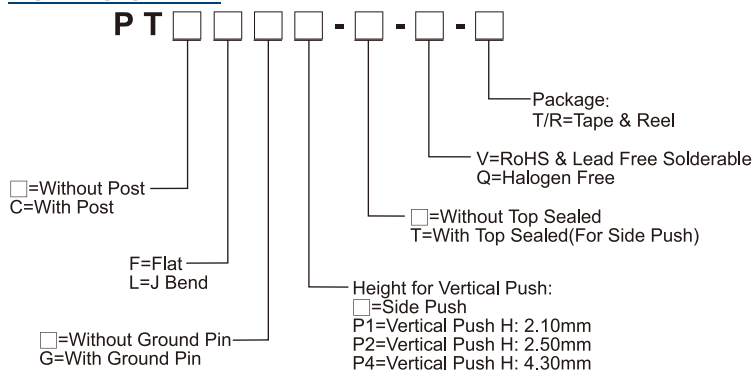
APPLICATION

- ※Automotive
- ※Portable electronic device
- ※Control panel

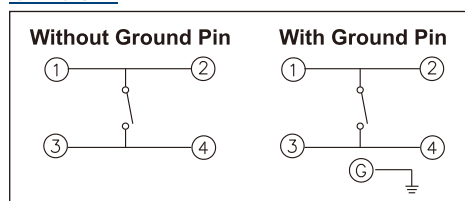
SPECIFICATION

Contact Rating	50mA, 12V DC
Contact Resistance	100mΩ max.
Insulation Resistance	100MΩ min. 500V DC
Dielectric Strength	250V AC/1 minute
Operating Force	160±50gf (Vertical Push) 220+80/-70gf (Side Push)
Travel	0.20mm (Vertical Push) 0.30mm (Side Push)
Operating Life	100,000 cycles
Operating Temp.	-25°C ~ +70°C
Storage Temp.	-30°C ~ +80°C

HOW TO ORDER



CIRCUIT

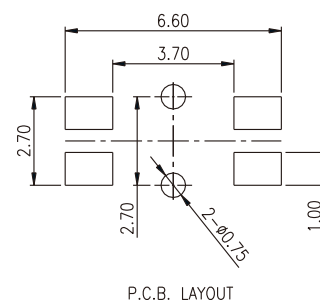
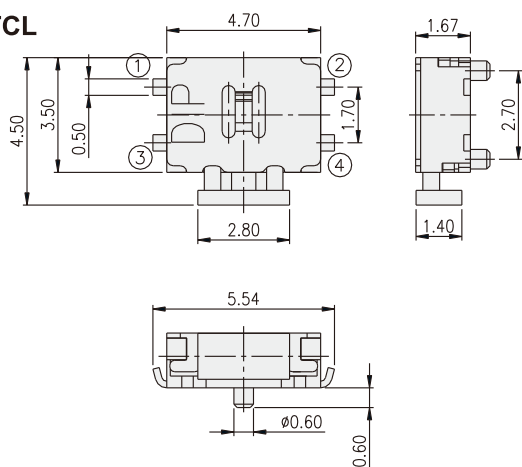


PACKAGE

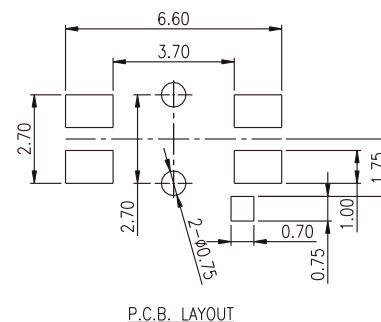
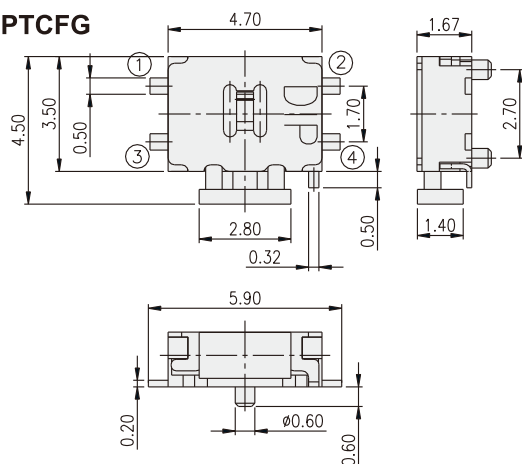
<Tape & Reel>

Side push: 3000 pcs
Vertical push: 2400 pcs

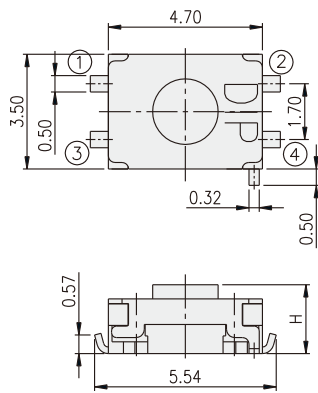
PTCL



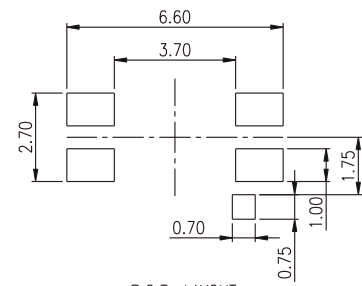
PTCFG



PTLGP□



PART NO.	H
PTLGP1	2.10
PTLGP2	2.50
PTLGP4	4.30



P.C.B. LAYOUT

Mouser Electronics

Authorized Distributor

Click to View Pricing, Inventory, Delivery & Lifecycle Information:

Diptronics:

[PTF-Q-T/R](#) [PTLP2-Q-T/R](#) [PTCLGP2-Q-T/R](#) [PTFGP4-Q-T/R](#) [PTCFG-Q-T/R](#) [PTCLP2-Q-T/R](#) [PTLP4-Q-T/R](#) [PTFP2-Q-T/R](#) [PTCFGP4-Q-T/R](#) [PTCFP2-Q-T/R](#) [PTFGP1-Q-T/R](#) [PTL-Q-T/R](#) [PTLGP2-Q-T/R](#) [PTCF-Q-T/R](#) [PTFGP2-Q-T/R](#) [PTLP1-Q-T/R](#) [PTCLG-Q-T/R](#) [PTCFGP1-Q-T/R](#) [PTFP1-Q-T/R](#) [PTCFP1-Q-T/R](#) [PTCL-Q-T/R](#) [PTCFGP2-Q-T/R](#) [PTCLGP1-Q-T/R](#) [PTF-V-T/R](#) [PTFP1-V-T/R](#) [PTCF-V-T/R](#)