

TYPICAL SWITCH ORDERING EXAMPLE

MB24

11

A2

G

40

F

A

Poles & Circuits

11	SPDT	ON	(ON)
61	DPDT	ON	(ON)

() = Momentary

Contact Materials & Ratings

W	Silver Rated 3A @ 125V AC
G	Gold Rated 0.4VA max @ 28V AC/DC max
A	Gold over Silver Rated 3A @ 125V AC & 0.4VA max @ 28V AC/DC max

Caps

F	.201" (5.1mm) Dia.
H	.295" (7.5mm) Dia.

Bushings

A2	.280" (7.1mm) Smooth with Keyway
A1	.280" (7.1mm) Threaded with Keyway
E2	.285" (7.24mm) Smooth with D Flat
E1	.285" (7.24mm) Threaded with D Flat
S2	.350" (8.9mm) Smooth with Keyway
S1	.350" (8.9mm) Threaded with Keyway

Cap Colors

A	Black
B	White
C	Red

Terminals

With Bracket

13	.250" (6.35mm) Straight PC with .465" (11.8mm) Bracket
15	.425" (10.8mm) Straight PC with .630" (16.0mm) Bracket
17	.964" (24.5mm) Straight PC with 1.150" (29.2mm) Bracket

With Reinforced Bracket

23	.250" (6.35mm) Straight PC with .465" (11.8mm) Bracket
25	.425" (10.8mm) Straight PC with .630" (16.0mm) Bracket
26	.750" (19.05mm) Straight PC with .953" (24.2mm) Bracket

With Terminal Support

30	Right Angle PC
40	Vertical PC

IMPORTANT:



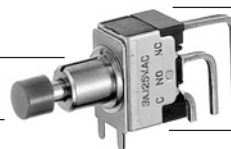
Switches are supplied without UL, cULus & CSA marking unless specified. **UL, cULus & CSA recognized only when ordered with marking on the switch.**

Specific models, ratings, & ordering instructions are noted on General Specifications page.

DESCRIPTION FOR TYPICAL ORDERING EXAMPLE

MB2411A2G40-FA

.280" (7.1mm) Smooth Bushing with Keyway
Black .201" (5.1mm) Diameter Cap



SPDT ON-(ON) Circuit
Vertical PC Terminals
Gold Contacts with 0.4VA Rating

Toggles
Rockers
Pushbuttons
Illuminated PB
Programmable
Keylocks
Rotaries
Slides
Tactiles
Tilt
Touch
Indicators
Accessories
Supplement

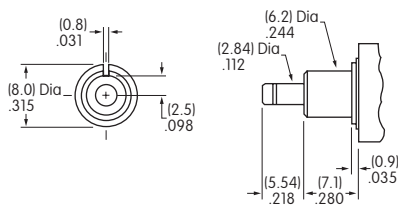
POLES & CIRCUITS

Pole	Model	Plunger Position () = Momentary		Connected Terminals		Throw & Switch Schematics
		Normal	Down	Normal	Down	
						Note: Terminal numbers are not actually on the switch. * When using terminal code 32, connected terminals and schematic are reversed.
SP	*MB2411	ON	(ON)	1-3	1-2	
DP	MB2461	ON	(ON)	1-3 4-6	1-2 4-5	

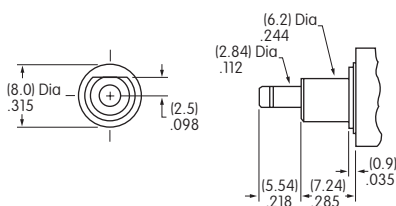
BUSHINGS

Note: Plunger selection is not required for MB2400 pushbuttons.
The plunger can be used with or without a cap.

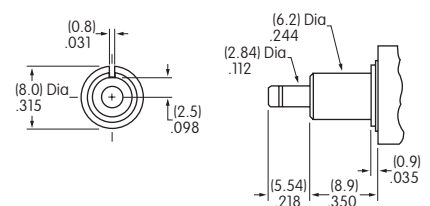
A2 .280" (7.1mm)
Smooth with Keyway



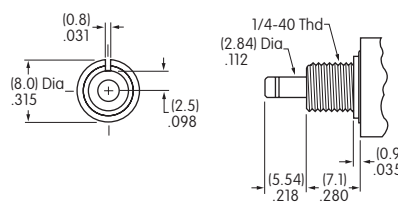
E2 .285" (7.24mm)
Smooth with D Flat



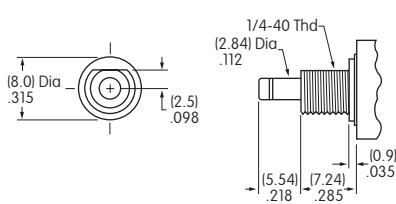
S2 .350" (8.9mm)
Smooth with Keyway



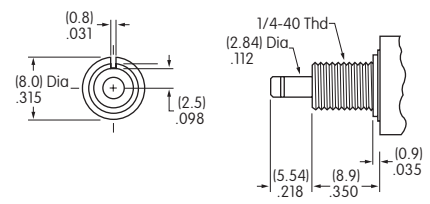
A1 .280" (7.1mm)
Threaded with Keyway



E1 .285" (7.24mm)
Threaded with D Flat



S1 .350" (8.9mm)
Threaded with Keyway



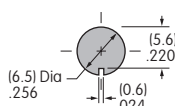
Maximum Panel Thickness with Standard Hardware: .068" (1.74mm)

Maximum Panel Thickness with Standard Hardware: .068" (1.74mm)

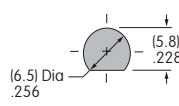
Maximum Panel Thickness with Standard Hardware: .134" (3.40mm)

Panel Cutouts

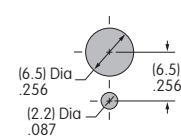
For A1, A2, S1, or S2 Bushing with Keyway



For E1 or E2 Bushing with D Flat



With Optional Locking Ring



Standard hardware includes 2 hex nuts & 1 lockwasher.
Hardware is illustrated following the Typical Switch Dimension drawings.

Toggles
Rockers
Pushbuttons
Illuminated PB
Programmable
Keylocks
Rotaries
Slides
Tactiles
Tilt
Touch
Indicators
Accessories
Supplement

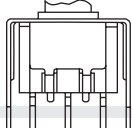
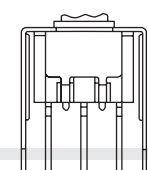
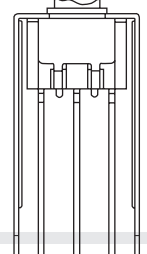
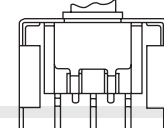
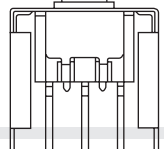
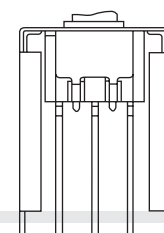
CONTACT MATERIALS & RATINGS

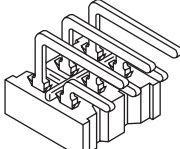
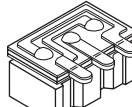
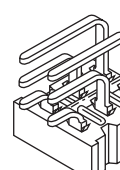
W	Silver over Silver	Power Level	3A @ 125V AC
G	Gold over Brass or Copper	Logic Level	0.4VA maximum @ 28V AC/DC maximum
Note: Complete explanation of operating range in Supplement section.			
A	Gold over Silver	Power Level or Logic Level	3A @ 125V AC or 0.4VA maximum @ 28V AC/DC maximum
Note: This dual rated option is suitable when two or more identical switches are used in logic and in power circuits within the same application. See Supplement section for complete explanation of dual rating and operating range.			

TERMINALS

Straight PC Mount with Bracket

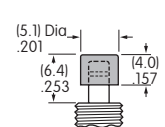
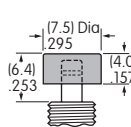


Straight PC Mount with Reinforced Bracket

13	15	17	23	25	26
.250" (6.35mm) Terminal with .465" (11.8mm) Bracket	.425" (10.8mm) Terminal with .630" (16.0mm) Bracket	.964" (24.5mm) Terminal with 1.150" (29.2mm) Bracket	.250" (6.35mm) Terminal with .465" (11.8mm) Bracket	.425" (10.8mm) Terminal with .630" (16.0mm) Bracket	.750" (19.05mm) Terminal with .953" (24.2mm) Bracket
					

30 Right Angle PC	32 Right Angle PCB with Reverse Circuit Available only in single pole with 0.4VA rating (code G)	40 Vertical PC
		

PCB footprints are on the following Typical Switch Dimension pages.

CAPS & CAP COLORS

F AT475 .201" (5.1mm) Diameter Cap		H AT496 .295" (7.5mm) Diameter Cap	
Material: Polyamide		Material: Polyamide	
Finish: Glossy		Finish: Glossy	

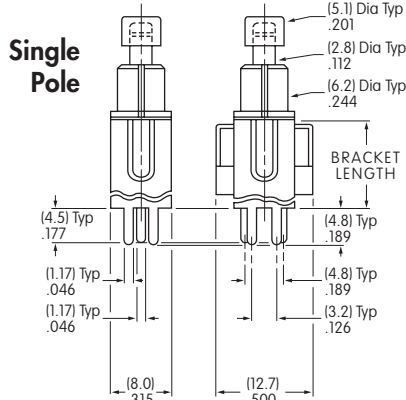
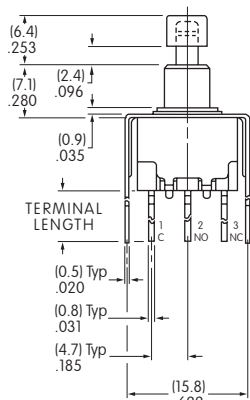
Cap Colors Available:

A Black	B White	C Red
----------------	----------------	--------------

Toggles
 Rockers
 Pushbuttons
 Illuminated PB
 Programmable
 Keylocks
 Rotaries
 Slides
 Tactiles
 Tilt
 Touch
 Indicators
 Accessories
 Supplement

TYPICAL SWITCH DIMENSIONS

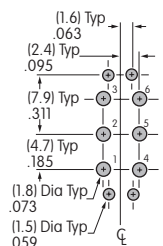
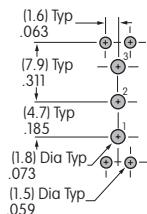
Straight PC • Bracket



Double Pole

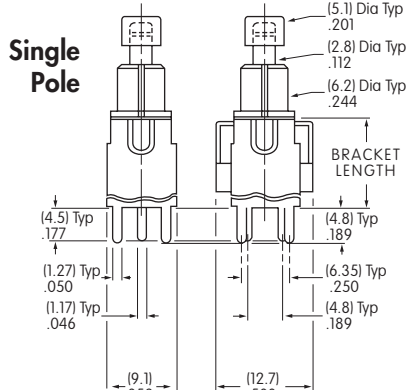
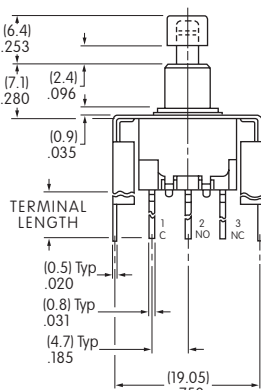


MB2411A2G13-FA



Terminal Code:	Terminal Length:	Bracket Length:
13	.250 (6.35mm)	.465 (11.8mm)
15	.425 (10.8mm)	.630 (16.0mm)
17	.964 (24.5mm)	1.150 (29.2mm)

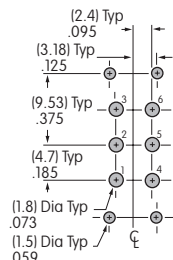
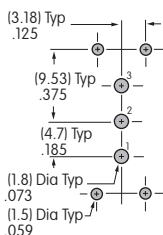
Straight PC • Reinforced Bracket



Double Pole



MB2411A2G23-FA

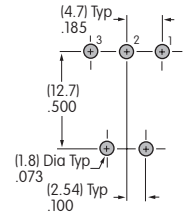
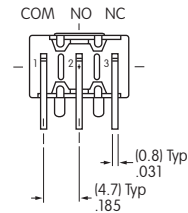
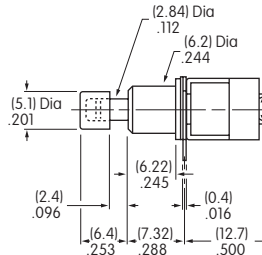
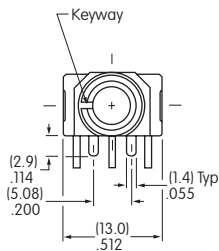


Terminal Code:	Terminal Length:	Bracket Length:
23	.250 (6.35mm)	.465 (11.8mm)
25	.425 (10.8mm)	.630 (16.0mm)
26	.750 (19.05mm)	.953 (24.2mm)

TYPICAL SWITCH DIMENSIONS

Right Angle PC

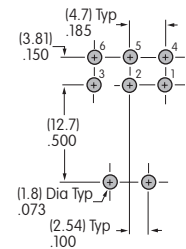
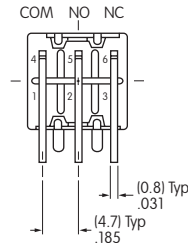
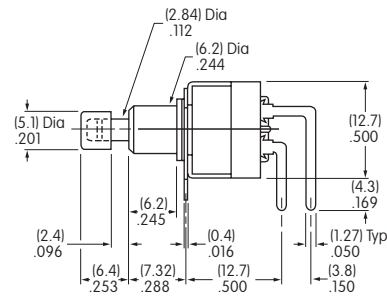
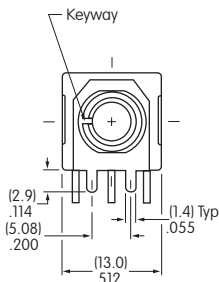
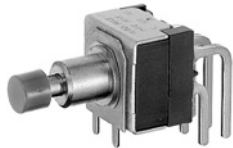
Single Pole



MB2411A2G30-FA

Right Angle PC

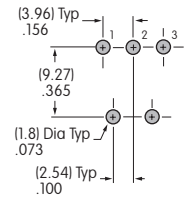
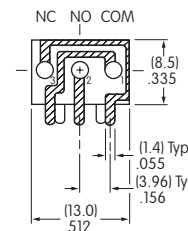
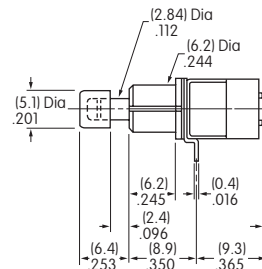
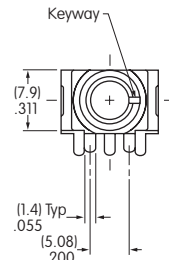
Double Pole



MB2461A2G30-FA

Right Angle PCB

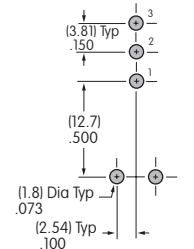
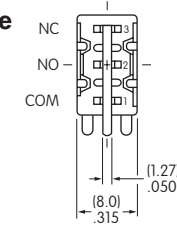
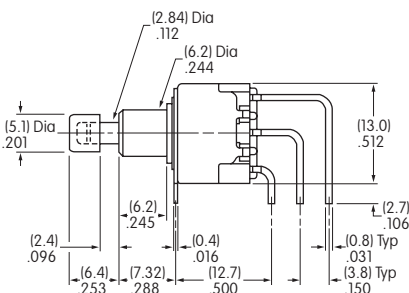
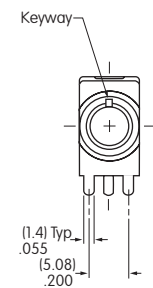
Single Pole • Reverse Circuit



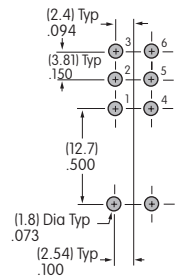
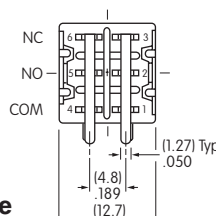
MB2411A2G32-FA

Vertical PC

Single Pole



Double Pole



MB2411A2G40-FA

Toggles

Rockers

Pushbuttons

Illuminated PB

Programmable

Keylocks

Rotaries

Slides

Tactiles

Tilt

Touch

Indicators

Accessories

Supplement

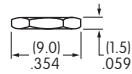
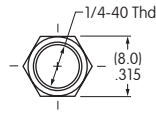
HARDWARE

Standard Hardware

AT513H Inch Threaded Hexagon Nut

2 included with each switch

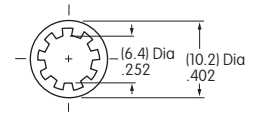
Material:
Brass with Nickel Plating



AT509 Lockwasher

1 included with each switch

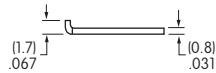
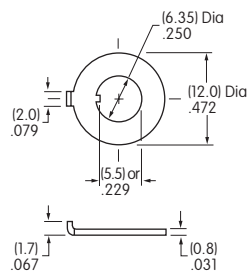
Material:
Steel with Zinc/Chromate



Optional Hardware

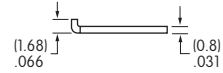
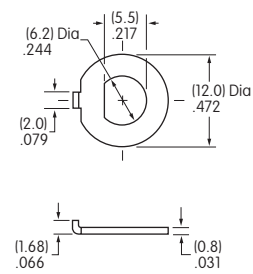
AT507H Locking Ring for A1 or S1 Bushing

Material:
Steel with Zinc/Chromate



AT515 Locking Ring for E1 Bushing

Material:
Steel with Zinc/Chromate



Toggles

Rockers

C Pushbuttons

Illuminated PB

Programmable

Keylocks

Rotaries

Slides

Tactiles

Tilt

Touch

Indicators

Accessories

Supplement

Mouser Electronics

Authorized Distributor

Click to View Pricing, Inventory, Delivery & Lifecycle Information:

[NKK Switches:](#)

[MB2411E1G40-HC-RO](#) [MB2461A2W30-RO](#) [MB2411S2W32-HA](#)