



MARC

Multi Axial Rotational Connector



- **Rotational Blindmate Error Correction**

Enables blindmating from 2 independently rotating axes with .100" of error correction

- **Sequential Mating**

Can be configured with up to 8 power and signal or 6 power and signal circuits and 2 pre mate contacts

The Multi Axial Rotational Connector "MARC" features 8 Powerpole® contacts integrated into a blindmate housing. The connector is designed to blindmate from 2 rotating axis or straight on. The two row, horizontally oriented connector uses our industry leading flat wiping contacts. The MARC is rated to 29 amps per circuit and can be configured with 8 standard length contacts or 6 standard length and 2 pre mate, multi-purpose contacts, which can function as ground, power or signal. The rugged connector is UL listed and rated up to 10,000 mating cycles. The dielectric is a chemically resistant PBT plastic. APP connectors are manufactured using the finest materials and world-class manufacturing processes. They embody the highest quality in the industry and meet all applicable industry standards.

- **Rugged and Durable**

- The connector is rated up to 10,000 mating cycles
- Constructed of chemically resistant PBT plastic

- **Interchangeable Genderless Design**

Makes assembly quick and easy and reduces number of parts stocked

| ORDERING INFORMATION |

Housings

Description	- Part Numbers -
Minimum Quantity	25
Housing with springs	602G00
Housing with float mount kit	602G01
Housing with fixed mount kit	602G02

PP15-45 Tin Plated Power Contacts

Offer cost effective performance up to 1,500 mating cycles. See specifications and temperature charts for amperage ratings by wire size.

Barrel	AWG	mm ²	Mating Force	Loose Piece ----- Part Numbers -----	Reeled ----- Part Numbers -----
Minimum Quantity				200	5,000
Open	14 to 10 K*	2.1 to 5.3	High	269G3-LPBK	269G3
Open	14 to 10 K*	2.1 to 5.3	Low	261G2-LPBK	261G2
Open	14 to 10 SF*	2.1 to 6.0	High	201G1H-LPBK	201G1H
Open	14 to 10 SF*	2.1 to 6.0	Low	200G1L-LPBK	200G1L
Open	16 to 12	1.3 to 3.3	High	269G1-LPBK	269G1
Open	16 to 12	1.3 to 3.3	Low	261G1-LPBK	261G1
Open	20 to 16	0.52 to 1.3	High	269G2-LPBK	269G2
Open	20 to 16	0.52 to 1.3	Low	262G1-LPBK	262G1
Open	20 to 16 SF*	0.52 to 1.5	Low	200G2L-LPBK	200G2L

45A Premate Ground Wire Contacts

Tin or silver plated contacts are rated for ground or power. Hand crimp tools are available for loose piece contacts. Reeled contacts can be used with high volume press and applicator crimp tooling. Tin contacts are rated for up to 1,500 mating cycles. Silver contacts are rated up to 10,000 mating cycles.

Type	AWG	mm ²	Mating Force	Loose Piece - Part Numbers -	Reeled Part - Numbers -
Minimum Quantity				200	5,000
Open, Tin	14 to 10	2.1 to 6.0	Low	1830G1-LPBK	1830G1
Open, Silver	14 to 10	2.1 to 6.0	Low	1830G2-LPBK	1830G2

PP15-45 Silver Plated Power Contacts

Maximize performance by offering up to 10,000 mating cycles and are recommended for circuit interrupt or hot plug applications. See specifications and temperature charts for amperage ratings by wire size. Only closed barrel contacts are suitable for soldering.

Barrel	AWG	mm ²	Mating Force	Loose Piece ----- Part Numbers -----	Reeled ----- Part Numbers -----
Minimum Quantity				5,000	200
Open	14 to 10 K*	2.1 to 5.3	Low	-	261G3-LPBK
Open	14 to 10 SF*	2.1 to 6.0	High	-	-
Open	14 to 10 SF*	2.1 to 6.0	Low	-	200G3L-LPBK
Open	16 to 12	1.3 to 3.3	Low	-	261G4-LPBK
Open	20 to 16	0.52 to 1.3	Low	-	262G2-LPBK
Open	20 to 16 SF*	0.52 to 1.5	Low	-	-
Closed	16 to 12	1.3 to 3.3	Low	1331-BK	1331
Closed	20 to 16	0.52 to 1.3	Low	1332-BK	1332

Accessories

Description	- Part Numbers -
Minimum Quantity ...	25 ...
Float Mount Kit	110G69
Fixed Mount Kit	103G40

K* - For #10 AWG class K stranded wire or smaller. For larger wires use superflex contacts.

SF*- Indicates wires with high stranding such as Super Flex.

SPECIFICATIONS

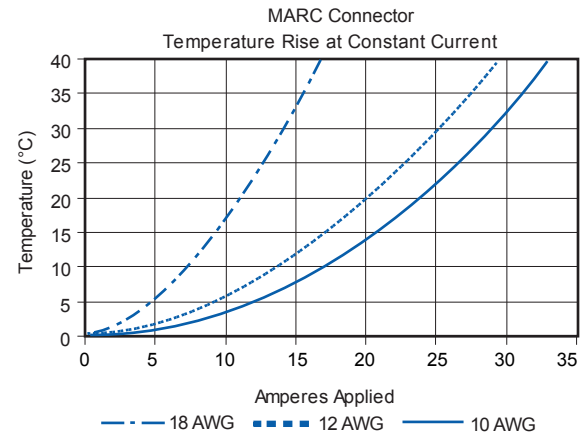
Electrical

Current Rating (Amperes)	#10 AWG = 29A @ 30° rise
	#12 AWG = 24A @ 30° rise
	#18 AWG = 14A @ 30° rise
Voltage Rating (AC/DC)	600V AC/DC per UL1977
	150V DC per EN1175-1
Contact Barrel Wire Size (AWG)	10 to 20
	(mm ²) 4 to 0.5
Average Contact Resistance	15A contact = 875 x 106 ohms
	30A contact = 600 x 106 ohms
	45A contact = 525 x 106 ohms

Mechanical

Contact Retention Force (lbf)	25
	(N) 111
Maximum Wire Insulation Diameter (inches)	0.175
	(mm) 4.45
No Load (mating cycles)	Up to 10,000
Average Disconnect Force -Fully Loaded (lbf)	18
	(N) 80
Operating Temperature Range (°C)	-40° to 125°
	(°F) -40° to 257°

TEMPERATURE CHART



Materials

Flammability Rating of Housing Material	PBT UL94 V-0
-----------------------------------------	--------------



File No. E26226

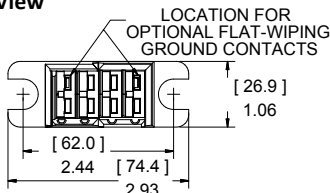
TOOLING INFORMATION

Wire Size		Loose Piece Part Numbers		Loose Piece Contact Crimp Tool					Reeled Part Numbers		Reeled Contact Crimp Tools		
AWG	mm ²	Tin Plating	Silver Plating	Hand Tool or	Pneumatic Bench Tool	+ Die	+ Locator	Number of Crimps	Tin Plating	Silver Plating	ATS Applicator	ATS Press	Air Feed Kit*
PP15 / 45 Flat Wiping Power & Ground													
16 / 20	1.3 / 0.52	N/A	1332	1309G2 or 1309G8	1367G1				N/A	N/A	N/A	N/A	N/A
12 / 16	3.3 / 1.3	N/A	1331						262G1	262G2	1385519-1		
16 / 20	1.3 / 0.52	262G1-LPBK	262G2-LPBK	1309G3 or 1309G8	N/A	N/A	N/A	Single	200G2L	200G4L	TBD		
16 / 20	1.5 / 0.52	200G2L-LPBK	200G4L-LPBK						269G2	N/A	1385519-1		
16 / 20	1.3 / 0.52	269G2-LPBK	N/A	1309G14 or 1309G8	N/A	N/A	N/A	Single	261G1	261G4	1385520-1	1725900-2 or [354500-1]	1424266-1 or [354578-1]
12 / 16	3.3 / 1.3	261G1-LPBK	261G4-LPBK						261G2	261G3	1385458-1		
10 / 14	5.3 / 2.1	261G2-LPBK	261G3-LPBK	1309G14 or 1309G8	N/A	N/A	N/A	Single	269G1	N/A	1385520-1	1725900-2 or [354500-1]	1424266-1 or [354578-1]
12 / 16	3.3 / 1.3	269G1-LPBK	N/A						269G3	N/A	1385458-1		
10 / 14	5.3 / 2.1	269G3-LPBK	N/A	1309G14 or 1309G8	N/A	N/A	N/A	Single	200G1L	200G3L	1385460-1	1725900-2 or [354500-1]	1424266-1 or [354578-1]
10 / 14	6.0 / 2.1	200G1L-LPBK	200G3L-LPBK						201G1H	201G3H	1385460-1		
10 / 14	6.0 / 2.1	201G1H-LPBK	201G3H-LPBK	1309G14 or 1309G8	N/A	N/A	N/A	Single	1830G1	1830G2	1385460-1	1725900-2 or [354500-1]	1424266-1 or [354578-1]
10 / 14	6.0 / 2.1	1830G1-LPBK	1830G2-LPBK										

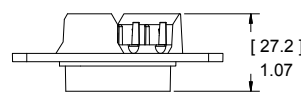
* All ATS applicators for APP® contacts are air feed style and require the press to have an air feed kit installed.
NOTE: See website for the most current information.

DIMENSIONS

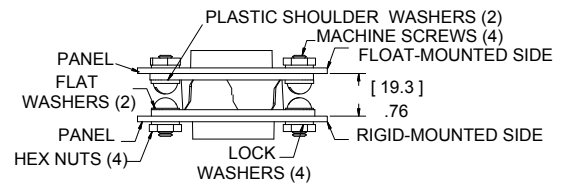
Top View



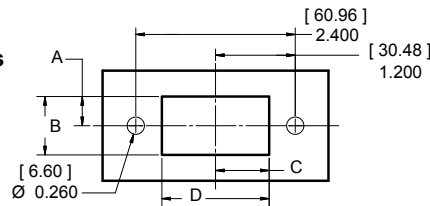
Side View



Mounted View



Layout For Panel Cut-Outs



Mounting Hardware	- A -	- B -	- C -	- D -
	mm	in.	mm	in.
Float	12.89	0.508	25.78	1.015
Fixed	11.11	0.438	22.23	0.875

All Data Subject To Change Without Notice

"APP & Anderson Power Products are registered trademarks of Anderson Power Products"

2025-0032 DS-MARC REV 07

HEADQUARTERS: Anderson Power Products®, 13 Pratts Junction Road, Sterling, MA 01564-2305 USA T:978-422-3600 F:978-422-0128

EUROPE: Anderson Power Products® Ltd., Unit 3, Europa Court, Europa Boulevard, Westbrook, Warrington, Cheshire, WA5 7TN United Kingdom T: +44 (0) 1925 428390 F: +44 (0) 1925 520203

ASIA / PACIFIC: IDEAL Anderson Asia Pacific Ltd., Unit 922-928 Topsail Plaza, 11 On Sum Street, Shatin N.T., Hong Kong T: +(852) 2636 0836 F: +(852) 2635 9036

CHINA: IDEAL Anderson Technologies (Shenzhen) Ltd., Block A8 Tantou Western Industrial Park, Songgang Baoan District, Shenzhen, PR. China 518105 T: +(86) 755 2768 2118 F: +(86) 755 2768 2218

www.andersonpower.com