

87654321


THE INFORMATION CONTAINED IN THIS DRAWING IS THE SOLE PROPERTY OF ANDERSON POWER PRODUCTS. ANY REPRODUCTION IN PART OR WHOLE WITHOUT THE WRITTEN PERMISSION OF ANDERSON POWER PRODUCTS IS PROHIBITED.

Copyright 2025

ANDERSON POWER PRODUCTS RESERVES THE RIGHT TO ALTER PRODUCT TYPES, THEIR TECHNICAL DATA, DIMENSION, STYLE AND ACCESSORIES WITHOUT PRIOR NOTIFICATION.

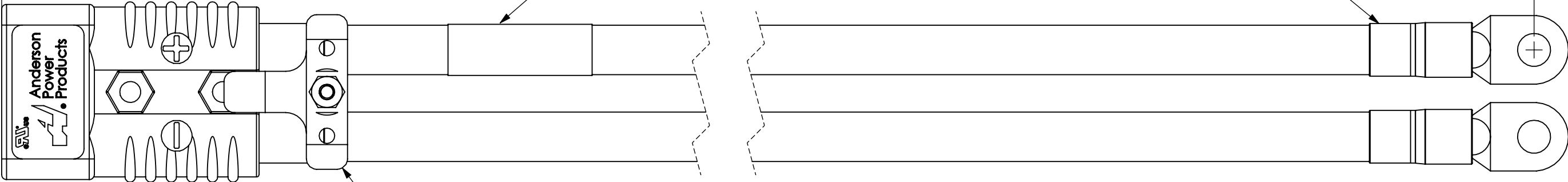
				LENGTH "L"		
APP P/N	CONNECTOR	CONTACTS	CABLE	RING TERMINALS	M	FT
CH00-1TABRK-EE00-2R5	P940-BK, SB175, GRAY	1382-BK, 1/0 AWG	1/0 AWG, UL3311, BLACK	1/0 AWG, DIA. 38 HOLE	2.5±.05	8.2±.2
			1/0 AWG, UL3311, RED			
MATERIAL	PBT BLEND	COPPER, SILVER PLATED	JACKET, EPDM	COPPER, TIN PLATED		
			O.D. - .58 [14.7] NOM.			

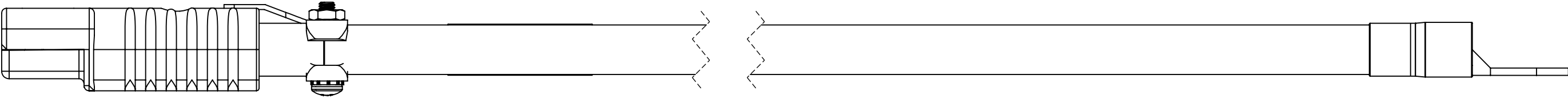
CONNECTOR 1

SEE SHEET 2  FOR LABEL DETAIL

HEAT SHRINK

CONTACTS 2





CABLE CLAMP

"L"


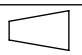
OVERALL RATINGS AND SPECIFICATIONS	
MAX VOLTAGE	600V DISCONNECT USE ONLY
MAX CURRENT	SEE INSTRUCTIONS
TEMPERATURE	90°C
RoHS AND REACH COMPLIANT	

NOTES:

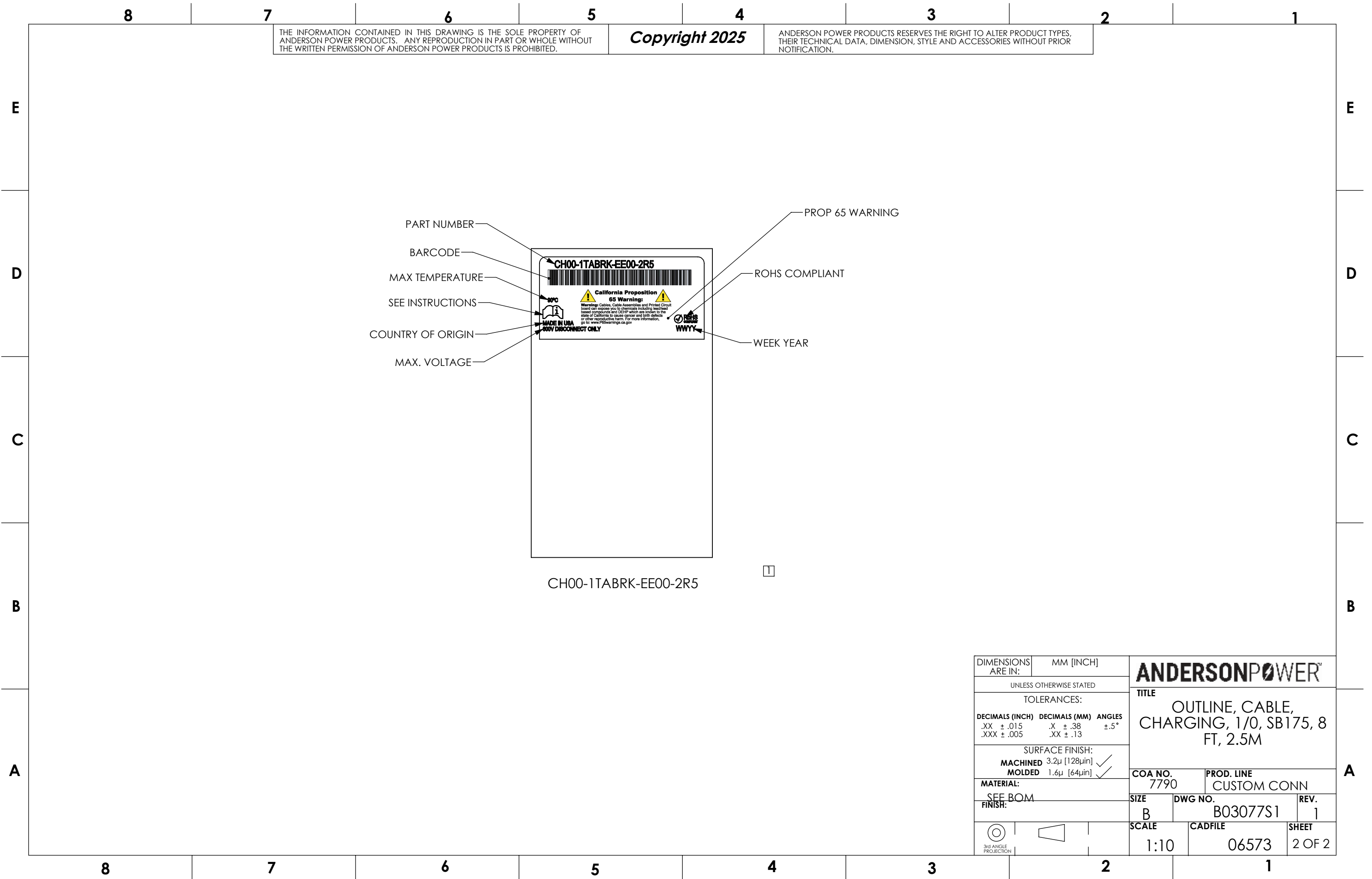
1. ASSEMBLIES ARE CHECKED 100% FOR CONTINUITY, POLARITY AND DIELECTRIC WITHSTAND VOLTAGE AT 1,500 VAC FOR 3 SECONDS.



2. LUG CONTACTS PASS A TENSILE PULL PER IEC 60352-2 AND PER UL 486A-486B

1	ECN 2025-0104 - LABEL UPDATED FOR MANUFACTURABILITY	CPD	10/13/2025
REV.	DESCRIPTION	APPRV	DATE
REVISIONS			

DIMENSIONS ARE IN:	METERS [FEET]	APPROVALS		ANDERSON POWER PRODUCTS	
UNLESS OTHERWISE STATED		DRAWN CPD 11/18/2024		TITLE OUTLINE, CABLE, CHARGING, 1/0, SB175, 8 FT, 2.5M	
<div><div>DECIMALS</div><div>ANGLES</div></div> <div><div>.XX±.1</div><div>.X±.25</div><div>X±1</div><div>±1.5°</div></div>		CHECKED CS 8/19/2025			
		MKT APPRV SJ 8/20/2025			
SURFACE FINISH:		QC APPRV HE 8/21/2025		COA NO. 7790	
MATERIAL: SEE BOM		ENG APPRV SC 8/20/2025		PROD. LINE CUSTOM CONN	
FINISH:				SIZE B	
				DWG NO. B03077S1	
		-CAD GENERATED DRAWING- DO NOT MANUALLY UPDATE DO NOT SCALE		REV. 1	
				SCALE NONE	
				CADFILE 06573	
				SHEET 1 OF 2	

87654321



DIMENSIONS ARE IN:		MM [INCH]		<div>ANDERSONPOWER™</div> <div>TITLE</div> <div>OUTLINE, CABLE, CHARGING, 1/0, SB175, 8 FT, 2.5M</div>	
UNLESS OTHERWISE STATED					
TOLERANCES:					
DECIMALS (INCH)	DECIMALS (MM)	ANGLES			
.XX ± .015	.X ± .38	±.5°			
.XXX ± .005	.XX ± .13				
SURFACE FINISH:				COA NO.	
MACHINED		3.2μ [128μin] ✓		PROD. LINE	
MOLDED		1.6μ [64μin] ✓		CUSTOM CONN	
MATERIAL:				SIZE	
SEE BOM				B	
FINISH:				DWG NO.	
				B03077S1	
				REV.	
				1	
				SCALE	
3rd ANGLE PROJECTION				1:10	
				CADFILE	
				06573	
				SHEET	
				2 OF 2	