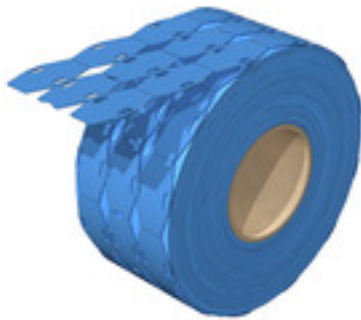


SFX-DT 9/24 MM BL**Weidmüller Interface GmbH & Co. KG**

Klingenbergstraße 26

D-32758 Detmold

Germany

www.weidmueller.com

We support our customers in the food industry with detectable marking solutions to ensure the high standards required within the framework of the HACCP concept. Thanks to a metallic filler, our detectable MultiMark markers can be reliably identified by metal and X-ray detectors. This minimises the risk of product contamination in the production process. Maximum safety is ensured with important product properties, such as corrosion resistance or higher ageing resistance to UV radiation in indoor areas and heat. These properties are regularly tested and confirmed in our own accredited laboratory. Not suitable for direct food contact.

- Detectable by metal and X-ray detectors
- Visually recognisable by blue colour
- Corrosion resistant metallic filler
- Clear and resistant print image
- Available in different versions for a wide variety of marking requirements

Highly flexible: SFX

SFX markers are the preferred choice for labelling cables if you prefer the classic cable tie solution. Cables do not always run in a straight line. The material used in SFX markers addresses this fact with highly flexible polyurethane. The marker follows each curve of the cable and latches on with ease.

General ordering data

| | |
|--------------------|--|
| Version | SlimFix, Conductor and cable markers, 7 - , 26 x 15 mm, blue |
| Order No. | 2621490000 |
| Type | SFX-DT 9/24 MM BL |
| GTIN (EAN) | 4050118625554 |
| Qty. | 1,000 pc(s). |
| compatible printer | 2599430000 2599440000 |

SFX-DT 9/24 MM BL

Weidmüller Interface GmbH & Co. KG

Klingenbergstraße 26

D-32758 Detmold

Germany

www.weidmueller.com

Technical data

Dimensions and weights

| | | | |
|------------|-------|-----------------|------------|
| Height | 26 mm | Height (inches) | 1.024 inch |
| Width | 15 mm | Width (inches) | 0.591 inch |
| Net weight | 0.2 g | | |

Temperatures

| | | | |
|----------------------------------|-------------|----------------------------------|--------|
| Operating temperature range | -30...65 °C | Continuous operating temp., min. | -30 °C |
| Continuous operating temp., max. | 65 °C | | |

General data

| | | | |
|-----------------------------------|--------------|-----------------------------------|--------------|
| Colour | blue | Halogen | No |
| Material | Polyethylene | Number per roll | 1,000 |
| Operating temperature range | -30...65 °C | Operating temperature range, max. | 65 °C |
| Operating temperature range, min. | -30 °C | Printed characters | without |
| Size of labelling field | 23.5 x 9 mm | Type of printing | neutral |
| UL 94 flammability rating | HB | Version | halogen-free |
| Width | 15 mm | | |

Conductor and cable markers

| | | | |
|-------------------------------|---------------------|----------------------------------|---------------------|
| Cable tie passage | Flat | Conductor O.D. | 7 - |
| Conductor O.D., max. | 40 mm | Conductor O.D., min. | 7 mm |
| Conductor cross-section, max. | 500 mm ² | Cross-section for connected wire | 500 mm ² |
| Halogen | No | Suitable cable tie | Plastic |

Classifications

| | | | |
|-------------|-------------|-------------|-------------|
| ETIM 6.0 | EC001530 | ETIM 7.0 | EC001530 |
| ETIM 8.0 | EC001530 | ETIM 9.0 | EC001530 |
| ETIM 10.0 | EC001530 | ECLASS 9.0 | 27-40-04-01 |
| ECLASS 9.1 | 27-40-04-01 | ECLASS 10.0 | 27-40-04-01 |
| ECLASS 11.0 | 27-28-11-02 | ECLASS 12.0 | 27-28-11-02 |
| ECLASS 13.0 | 27-28-11-02 | ECLASS 14.0 | 27-28-11-02 |
| ECLASS 15.0 | 27-28-11-02 | | |

Environmental Product Compliance

| | |
|------------------------|-----------------------------|
| RoHS Compliance Status | Compliant without exemption |
| REACH SVHC | No SVHC above 0.1 wt% |

Approvals

| | |
|------|---------|
| ROHS | Conform |
|------|---------|

Downloads

| | |
|------------------|--|
| Engineering Data | CAD data – STEP |
| Catalogues | Catalogues in PDF-format |

SFX-DT 9/24 MM BL

Weidmüller Interface GmbH & Co. KG

Klingenbergstraße 26

D-32758 Detmold

Germany

www.weidmueller.com

Drawings

