

DO NOT
SCALE FROM
THIS PRINT

DESIGNED & DIMENSIONED
IN MILLIMETERS[INCHES]

ZF5S-XX-XX-X-WT-X-XX

No OF POSITIONS
-04 THRU -50
(USE ZF5-XX AND
ZF5C-XX)

LEAD STYLE
-01: USE C-297-01-T
-02: USE C-297-03-T
-03: USE C-297-02-T & C-297-04-T

PLATING SPECIFICATION
-T: PURE TIN, MATTE FINISH

PACKAGING
BLANK: TUBES (SEE NOTE 8)
-TR: TAPE & REEL (SEE NOTES 9 & 10)
-FR: FULL REEL QTY TAPE & REEL
(SEE NOTES 9 & 10)

OPTION
-K: KAPTON PAD
(N/A IN -03 LEAD STYLE)
(USE K-DOT-.118-.219-.005)
(SEE SHEET 4, FIG 3)

WELD TAB
USE WT-60-01-T

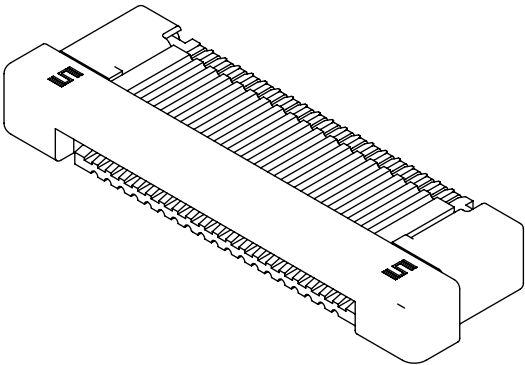
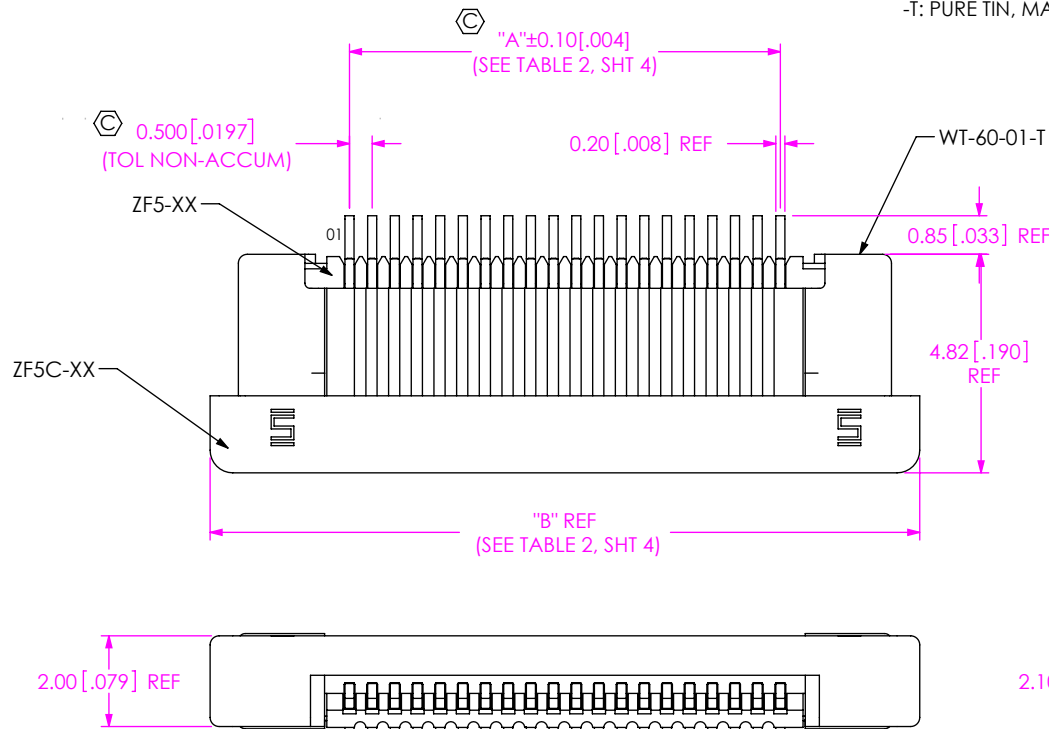


TABLE 1	
No OF POS.	COPLANARITY
-04 THRU -30	0.10 [0.004]
-31 THRU -50	0.15 [0.006]

FIG 1
ZF5S-20-01-T-WT SHOWN
(WITH CAM CLOSED)

NOTES:

- ⬡ REPRESENTS A CRITICAL DIMENSION.
- MAXIMUM BURR ALLOWANCE: 0.025 [0.0010]
- MINIMUM PUSHOUT FORCE: 6 OZ
- CO-PLANARITY INCLUDES TAILS AND WELD TABS.
- WELD TAB RETENTION: 6 OZ
- BREAKOFF BURR NOT TO EXCEED 0.18 [0.007] AND MUST REMAIN ATTACHED.
- PIN 1 TO HAVE ORIENTATION AS SHOWN.
- TUBES ARE STANDARD PACKAGING.
- ORDERS WILL BE PACKAGED ACCORDING TO THE SAMTEC PACKAGING EFFICIENCY STANDARDS (SPES) FOUND ON WWW.SAMTEC.COM.
- ATTACH LABEL TO EACH REEL.

UNLESS OTHERWISE SPECIFIED,
DIMENSIONS ARE IN MILLIMETERS.
TOLERANCES ARE:
DECIMALS ANGLES
X.X: ±0.3 [0.1] 2°
X.XX: ±0.13 [0.005]
X.XXX: ±0.051 [0.0020]

PROPRIETARY NOTE
THIS DOCUMENT CONTAINS CONFIDENTIAL AND
PROPRIETARY INFORMATION AND ALL DESIGN,
MANUFACTURING, REPRODUCTION, USE, PATENT RIGHTS
AND SALES RIGHTS ARE EXPRESSLY RESERVED BY SAMTEC,
INC. THIS DOCUMENT SHALL NOT BE DISCLOSED, IN WHOLE
OR PART, TO ANY UNAUTHORIZED PERSON OR ENTITY NOR
REPRODUCED, TRANSFERRED OR INCORPORATED IN ANY
OTHER PROJECT IN ANY MANNER WITHOUT THE EXPRESS
WRITTEN CONSENT OF SAMTEC, INC.

MATERIAL: DO NOT SCALE DRAWING SHEET SCALE: 6:1
HOUSING: LCP, COLOR: NATURAL
CAM: LCP, COLOR: BLACK
CONTACT: PHOS BRONZE
WELD TAB: BRASS

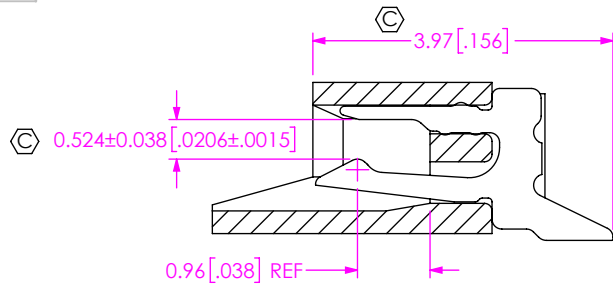
c:\enterprise\dwg\MISC\MKTG\ZF5S-XX-XX-X-WT-X-XX-MKT.SLDDRW

520 PARK EAST BLVD, NEW ALBANY, IN 47150
PHONE: 812-944-6733 FAX: 812-948-5047
e-Mail info@SAMTEC.com code 55322

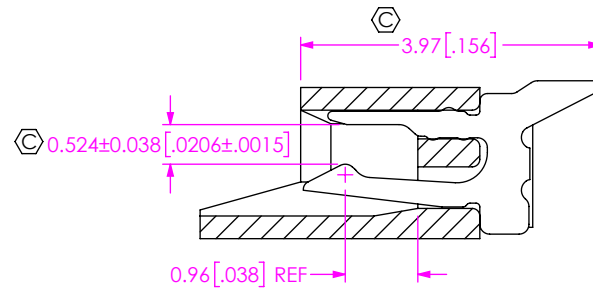
DESCRIPTION:
ZERO INSERTION FORCE .5mm ASSEMBLY

DWG. NO.
ZF5S-XX-XX-X-WT-X-XX

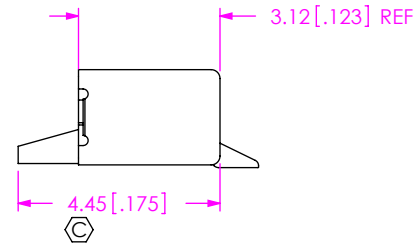
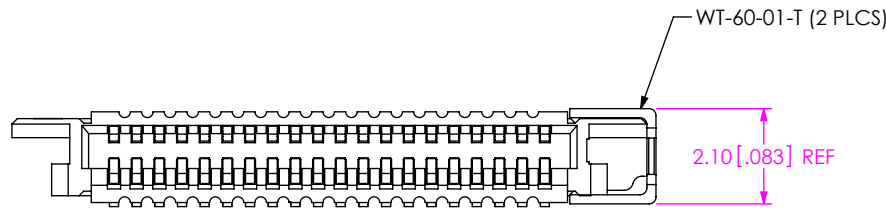
BY: G PURVIS 01/20/2011 SHEET 1 OF 5



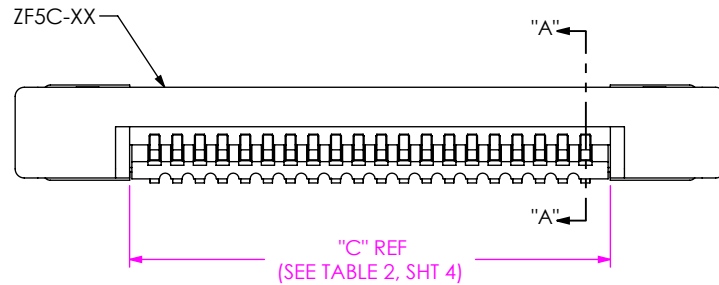
-01 LEAD STYLE
IN PROCESS 1
FILL C-297-01-T



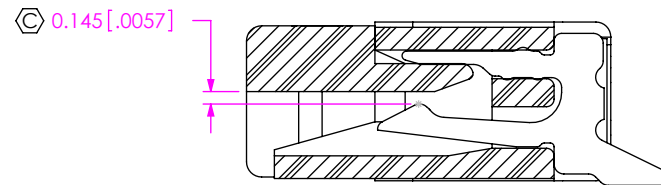
-02 LEAD STYLE
IN PROCESS 1
FILL C-297-03-T



IN PROCESS 2
FILL WT-60-01-T
(SOME FEATURES REMOVED FOR CLARITY)



IN PROCESS 3
INSERT ZF5C-XX-XX
(CAM SHOWN IN CLOSED POSITION)



SECTION "A"-"A"

PROPRIETARY NOTE
THIS DOCUMENT CONTAINS CONFIDENTIAL AND PROPRIETARY INFORMATION AND ALL DESIGN, MANUFACTURING, REPRODUCTION, USE, PATENT RIGHTS AND SALES RIGHTS ARE EXPRESSLY RESERVED BY SAMTEC, INC. THIS DOCUMENT SHALL NOT BE DISCLOSED, IN WHOLE OR PART, TO ANY UNAUTHORIZED PERSON OR ENTITY NOR REPRODUCED, TRANSFERRED OR INCORPORATED IN ANY OTHER PROJECT IN ANY MANNER WITHOUT THE EXPRESS WRITTEN CONSENT OF SAMTEC, INC.

DO NOT SCALE DRAWING

SHEET SCALE: 10:1

samtec

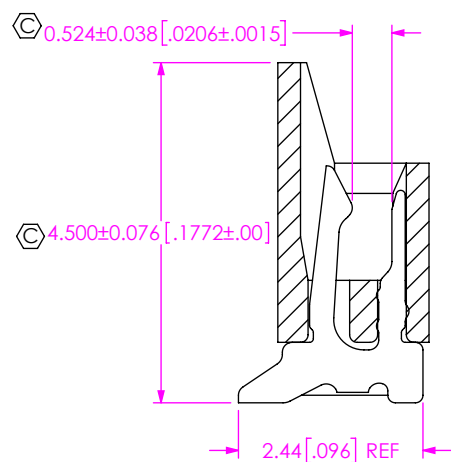
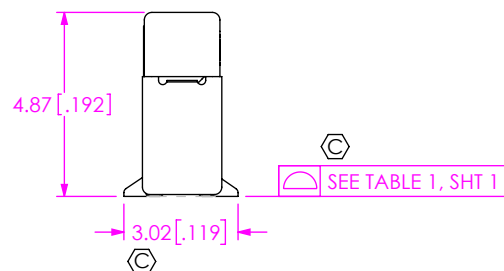
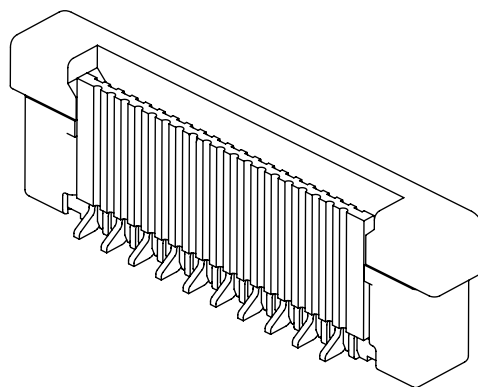
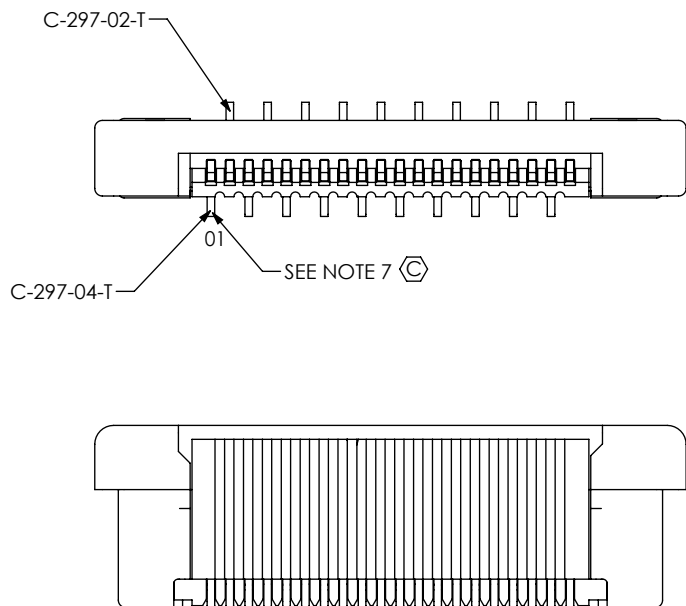
520 PARK EAST BLVD, NEW ALBANY, IN 47150
PHONE: 812-944-6733 FAX: 812-948-5047
e-Mail info@SAMTEC.com code 55322

DESCRIPTION:
ZERO INSERTION FORCE .5mm ASSEMBLY

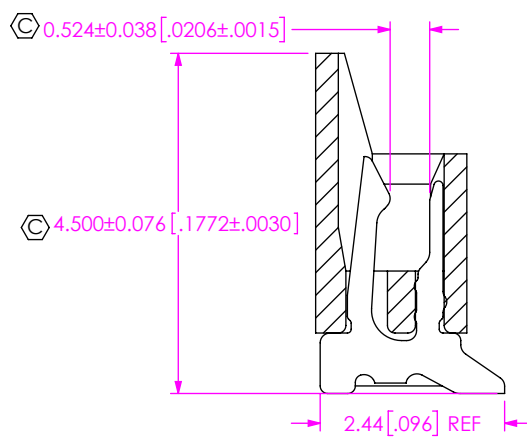
DWG. NO.
ZF5S-XX-XX-X-WT-X-XX

BY: G PURVIS 01/20/2011 SHEET 2 OF 5

FIG 2
-03 LEAD STYLE
(DIFFERENT AS SHOWN, OTHERWISE SAME AS FIG 1)
(ZF5S-20-03-T-WT SHOWN)

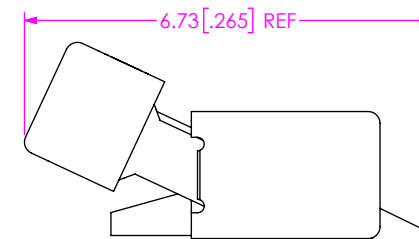


**-03 LEAD STYLE
IN PROCESS 1A**
FILL C-297-04-T
(SAME AS IN PROCESS 1 FOR -01 LEAD
STYLE EXCEPT AS SHOWN)
(ODD POSITIONS FILLED ONLY)

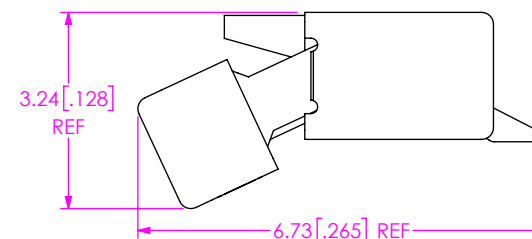


**-03 LEAD STYLE
IN PROCESS 1B**
FILL C-297-02-T
(SAME AS IN PROCESS 1 FOR -01 LEAD
STYLE EXCEPT AS SHOWN)
(EVEN POSITIONS FILLED ONLY)

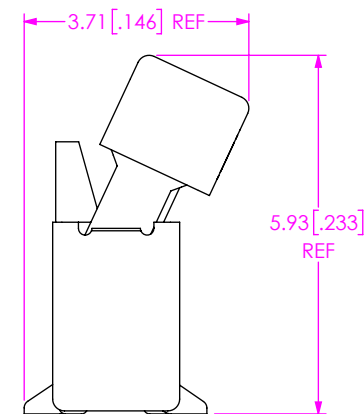
APPLICATION VIEWS



**-01 LEAD STYLE SHOWN
(WITH CAM OPEN)**



**-02 LEAD STYLE SHOWN
(WITH CAM OPEN)**



**-03 LEAD STYLE SHOWN
(WITH CAM OPEN)**

PROPRIETARY NOTE
THIS DOCUMENT CONTAINS CONFIDENTIAL AND
PROPRIETARY INFORMATION AND ALL DESIGN,
MANUFACTURING, REPRODUCTION, USE, PATENT RIGHTS
AND SALES RIGHTS ARE EXPRESSLY RESERVED BY SAMTEC,
INC. THIS DOCUMENT SHALL NOT BE DISCLOSED, IN WHOLE
OR PART, TO ANY UNAUTHORIZED PERSON OR ENTITY NOR
REPRODUCED, TRANSFERRED OR INCORPORATED IN ANY
OTHER PROJECT IN ANY MANNER WITHOUT THE EXPRESS
WRITTEN CONSENT OF SAMTEC, INC.

DO NOT SCALE DRAWING

SHEET SCALE: 5:1

samtec

520 PARK EAST BLVD, NEW ALBANY, IN 47150
PHONE: 812-944-6733 FAX: 812-948-5047
e-Mail info@SAMTEC.com code 55322

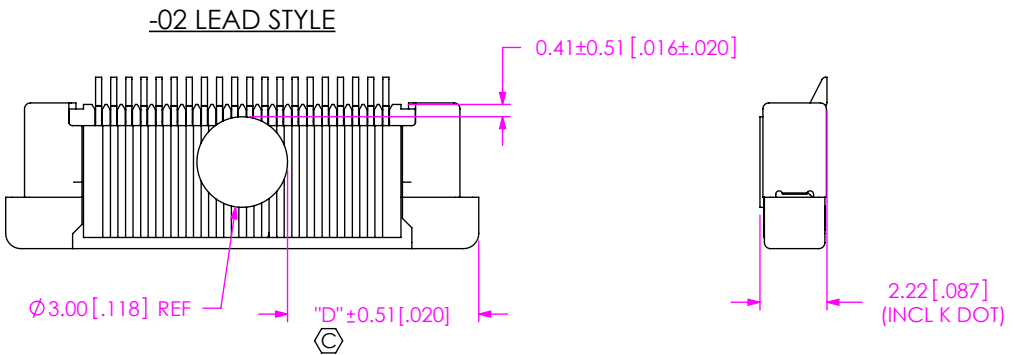
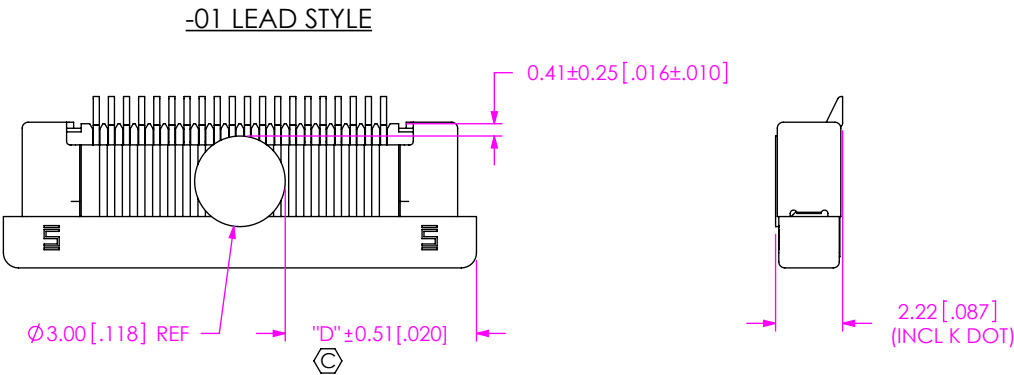
DESCRIPTION:
ZERO INSERTION FORCE .5mm ASSEMBLY

DWG. NO.
ZF5S-XX-XX-X-WT-X-XX

BY: G PURVIS 01/20/2011 SHEET 3 OF 5

TABLE 2				
No OF POS	"A"	"B"	"C"	"D"
-04	1.50 [0.059]	7.65 [0.301]	2.60 [0.102]	2.32 [0.091]
-05	2.00 [0.079]	8.15 [0.321]	3.10 [0.122]	2.57 [0.101]
-06	2.50 [0.098]	8.65 [0.341]	3.60 [0.142]	2.82 [0.111]
-07	3.00 [0.118]	9.15 [0.360]	4.10 [0.161]	3.07 [0.121]
-08	3.50 [0.138]	9.65 [0.380]	4.60 [0.181]	3.32 [0.131]
-09	4.00 [0.157]	10.15 [0.400]	5.10 [0.201]	3.57 [0.141]
-10	4.50 [0.177]	10.65 [0.419]	5.60 [0.220]	3.82 [0.150]
-11	5.00 [0.197]	11.15 [0.439]	6.10 [0.240]	4.07 [0.160]
-12	5.50 [0.217]	11.65 [0.459]	6.60 [0.260]	4.32 [0.170]
-13	6.00 [0.236]	12.15 [0.478]	7.10 [0.280]	4.57 [0.180]
-14	6.50 [0.256]	12.65 [0.498]	7.60 [0.299]	4.82 [0.190]
-15	7.00 [0.276]	13.15 [0.518]	8.10 [0.319]	5.07 [0.200]
-16	7.50 [0.295]	13.65 [0.537]	8.60 [0.339]	5.32 [0.209]
-17	8.00 [0.315]	14.15 [0.557]	9.10 [0.358]	5.57 [0.219]
-18	8.50 [0.335]	14.65 [0.577]	9.60 [0.378]	5.82 [0.229]
-19	9.00 [0.354]	15.15 [0.596]	10.10 [0.398]	6.07 [0.239]
-20	9.50 [0.374]	15.65 [0.616]	10.60 [0.417]	6.32 [0.249]
-21	10.00 [0.394]	16.15 [0.636]	11.10 [0.437]	6.57 [0.259]
-22	10.50 [0.413]	16.65 [0.656]	11.60 [0.457]	6.82 [0.269]
-23	11.00 [0.433]	17.15 [0.675]	12.10 [0.476]	7.07 [0.278]
-24	11.50 [0.453]	17.65 [0.695]	12.60 [0.496]	7.32 [0.288]
-25	12.00 [0.472]	18.15 [0.715]	13.10 [0.516]	7.57 [0.298]
-26	12.50 [0.492]	18.65 [0.734]	13.60 [0.535]	7.82 [0.308]
-27	13.00 [0.512]	19.15 [0.754]	14.10 [0.555]	8.07 [0.318]
-28	13.50 [0.531]	19.65 [0.774]	14.60 [0.575]	8.32 [0.328]
-29	14.00 [0.551]	20.15 [0.793]	15.10 [0.594]	8.57 [0.337]
-30	14.50 [0.571]	20.65 [0.813]	15.60 [0.614]	8.82 [0.347]
-31	15.00 [0.591]	21.15 [0.833]	16.10 [0.634]	9.07 [0.357]
-32	15.50 [0.610]	21.65 [0.852]	16.60 [0.654]	9.32 [0.367]
-33	16.00 [0.630]	22.15 [0.872]	17.10 [0.673]	9.57 [0.377]
-34	16.50 [0.650]	22.65 [0.892]	17.60 [0.693]	9.82 [0.387]
-35	17.00 [0.669]	23.15 [0.911]	18.10 [0.713]	10.07 [0.396]
-36	17.50 [0.689]	23.65 [0.931]	18.60 [0.732]	10.32 [0.406]
-37	18.00 [0.709]	24.15 [0.951]	19.10 [0.752]	10.57 [0.416]
-38	18.50 [0.728]	24.65 [0.970]	19.60 [0.772]	10.82 [0.426]
-39	19.00 [0.748]	25.15 [0.990]	20.10 [0.791]	11.07 [0.436]
-40	19.50 [0.768]	25.65 [1.010]	20.60 [0.811]	11.32 [0.446]
-41	20.00 [0.787]	26.15 [1.030]	21.10 [0.831]	11.57 [0.456]
-42	20.50 [0.807]	26.65 [1.049]	21.60 [0.850]	11.82 [0.465]
-43	21.00 [0.827]	27.15 [1.069]	22.10 [0.870]	12.07 [0.475]
-44	21.50 [0.846]	27.65 [1.089]	22.60 [0.890]	12.32 [0.485]
-45	22.00 [0.866]	28.15 [1.108]	23.10 [0.909]	12.57 [0.495]
-46	22.50 [0.886]	28.65 [1.128]	23.60 [0.929]	12.82 [0.505]
-47	23.00 [0.906]	29.15 [1.148]	24.10 [0.949]	13.07 [0.515]
-48	23.50 [0.925]	29.65 [1.167]	24.60 [0.969]	13.32 [0.524]
-49	24.00 [0.945]	30.15 [1.187]	25.10 [0.988]	13.57 [0.534]
-50	24.50 [0.965]	30.65 [1.207]	25.60 [1.008]	13.82 [0.544]

FIG 3
KAPTON PAD
(USE K-DOT-.118-.219-.005)
(DIFFERENT AS SHOWN, OTHERWISE SAME AS FIG 1)



• PROPRIETARY NOTE •
THIS DOCUMENT CONTAINS CONFIDENTIAL AND
PROPRIETARY INFORMATION AND ALL DESIGN,
MANUFACTURING, REPRODUCTION, USE, PATENT RIGHTS
AND SALES RIGHTS ARE EXPRESSLY RESERVED BY SAMTEC,
INC. THIS DOCUMENT SHALL NOT BE DISCLOSED, IN WHOLE
OR PART, TO ANY UNAUTHORIZED PERSON OR ENTITY NOR
REPRODUCED, TRANSFERRED OR INCORPORATED IN ANY
OTHER PROJECT IN ANY MANNER WITHOUT THE EXPRESS
WRITTEN CONSENT OF SAMTEC, INC.

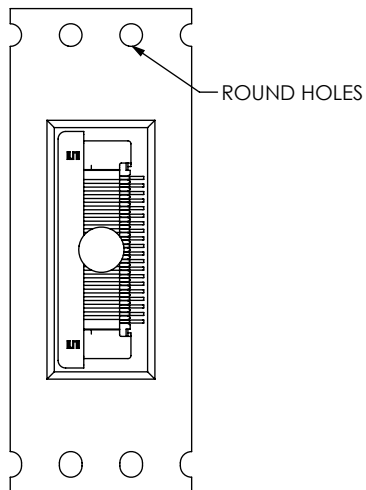
samtec
520 PARK EAST BLVD, NEW ALBANY, IN 47150
PHONE: 812-944-6733 FAX: 812-948-5047
e-Mail info@SAMTEC.com code 55322

SHEET SCALE: 4:1

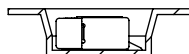
DESCRIPTION:
ZERO INSERTION FORCE .5mm ASSEMBLY
DWG. NO.
ZF5S-XX-XX-X-WT-X-XX
BY: G PURVIS 01/20/2011 SHEET 4 OF 5

PACKAGING VIEWS

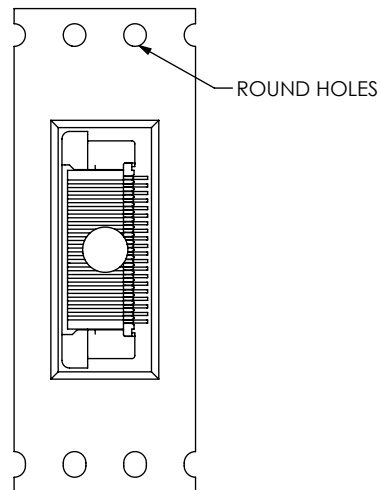
-01 LEAD STYLE
SHOWN WITH -K OPTION



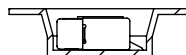
USER DIRECTION OF UN-REELING
POCKET NOT DETAILED →



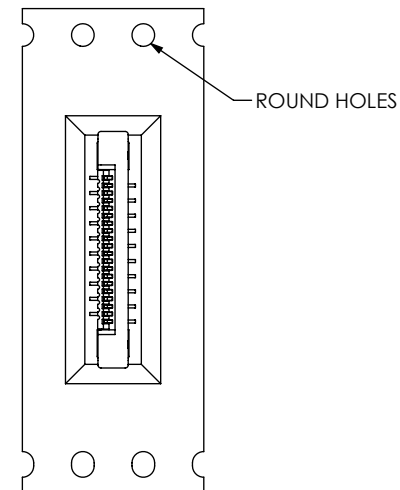
-02 LEAD STYLE
SHOWN WITH -K OPTION



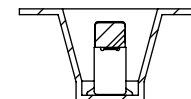
USER DIRECTION OF UN-REELING
POCKET NOT DETAILED →



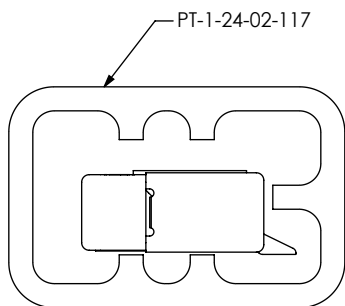
-03 LEAD STYLE



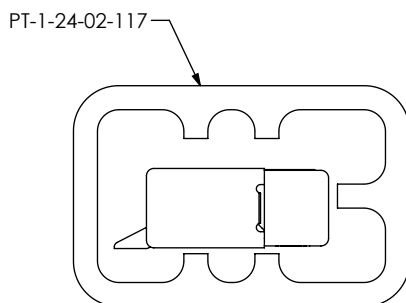
USER DIRECTION OF UN-REELING
POCKET NOT DETAILED →



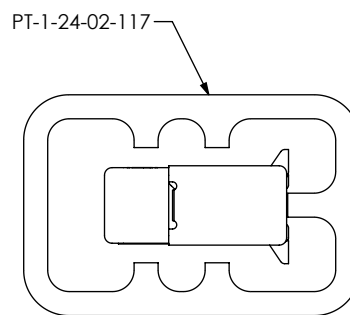
PACKAGING VIEWS
[PARTS TO HAVE POSITION #1 LOADED IN
SAME DIRECTION AS ARROW ON TUBE]



-01 LEAD STYLE
(USE TP-24-02 PLUG)



-02 LEAD STYLE
(USE TP-24-02 PLUG)



-03 LEAD STYLE
(USE TP-24-02 PLUG)

c:\enterprisevault\DWG\MISC\MKTG\ZF5S-XX-XX-X-WT-X-XX-MKT.SLDDRW

PROPRIETARY NOTE
THIS DOCUMENT CONTAINS CONFIDENTIAL AND
PROPRIETARY INFORMATION AND ALL DESIGN,
MANUFACTURING, REPRODUCTION, USE, PATENT RIGHTS
AND SALES RIGHTS ARE EXPRESSLY RESERVED BY SAMTEC,
INC. THIS DOCUMENT SHALL NOT BE DISCLOSED, IN WHOLE
OR PART, TO ANY UNAUTHORIZED PERSON OR ENTITY NOR
REPRODUCED, TRANSFERRED OR INCORPORATED IN ANY
OTHER PROJECT IN ANY MANNER WITHOUT THE EXPRESS
WRITTEN CONSENT OF SAMTEC, INC.

DO NOT SCALE DRAWING

SHEET SCALE: 10:1

samtec

520 PARK EAST BLVD, NEW ALBANY, IN 47150
PHONE: 812-944-6733 FAX: 812-948-5047
e-Mail info@SAMTEC.com code 55322

DESCRIPTION:
ZERO INSERTION FORCE .5mm ASSEMBLY

DWG. NO.
ZF5S-XX-XX-X-WT-X-XX

BY: G PURVIS 01/20/2011 SHEET 5 OF 5