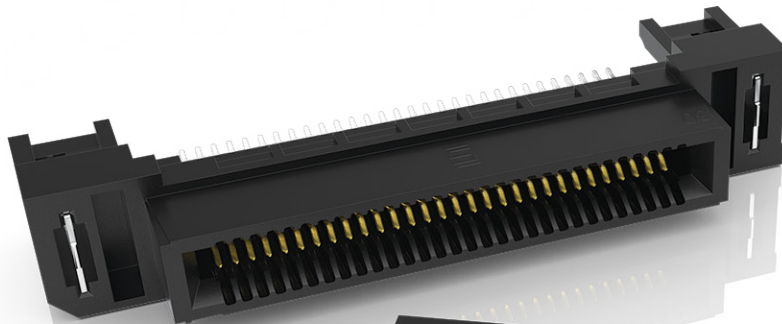


GENERATE[®]

HIGH-SPEED EDGE CARD SYSTEMS

0.60 mm, 0.80 mm and 1.00 mm PITCH

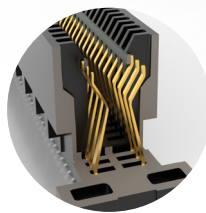
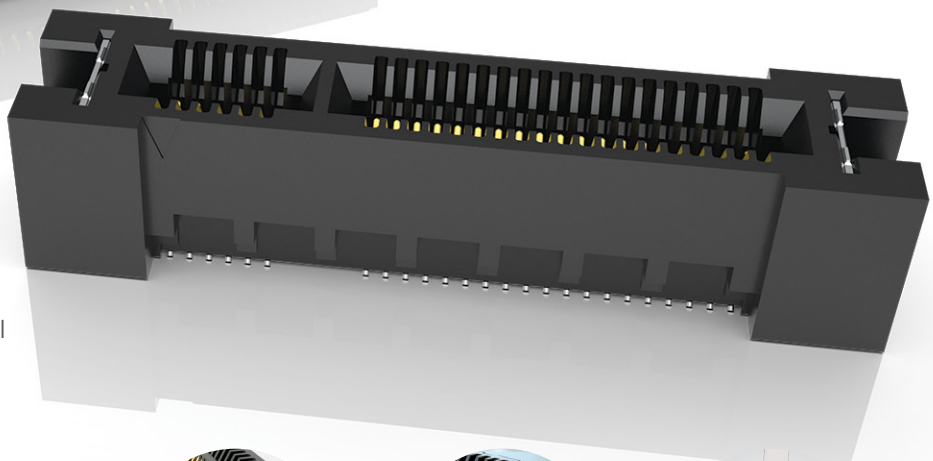


**EDGE
RATE[®]**
CONTACT

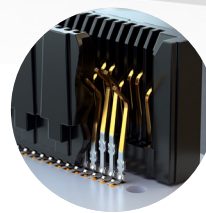
FEATURES & BENEFITS

- Maximum Design Flexibility
- Up to 64 Gbps PAM4 performance
- PCI Express[®] 3.0, 4.0, 5.0 and 6.0
- Edge Rate[®] contacts optimized for signal integrity performance and high-cycle life
- Up to 200 positions available
- Vertical, right-angle, edge mount, pass-through orientations
- Power/signal combo, press-fit tails, rugged weld tabs, locks and latches
- Mating cable assemblies available

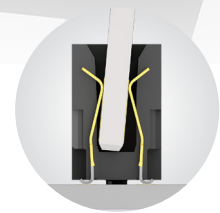
The PCI Express[®] design marks are registered trademarks and/or service marks of PCI-SIG.



Rugged tucked beam technology (HTEC8)



Differential pair for increased speed (HSEC8-DP)



Custom designs allow for misalignment in the X-Y axes (HSEC1)

KEY SPECIFICATIONS

| SERIES | PITCH | TOTAL POSITIONS | INSULATOR MATERIAL | CONTACT MATERIAL | OPERATING TEMP RANGE | CURRENT RATING | VOLTAGE RATING | LEAD-FREE SOLDERABLE |
|----------|---------|-----------------|--------------------|------------------|----------------------|----------------|-----------------|----------------------|
| HSEC6 | 0.60 mm | 56-168 | Black LCP | Copper Alloy | -55 °C to +125 °C | 1.9 A (2 pins) | 240 VAC/339 VDC | Yes |
| HTEC8 | 0.80 mm | 20-200 | Black LCP | Copper Alloy | -55 °C to +125 °C | 3.0 A (2 pins) | 215 VAC/304 VDC | Yes |
| HSEC8-DV | 0.80 mm | 18-200 | Black LCP | BeCu | -55 °C to +125 °C | 2.8 A (2 pins) | 240 VAC/339 VDC | Yes |
| HSEC8-RA | 0.80 mm | 18-120 | Black LCP | BeCu | -55 °C to +125 °C | 2.6 A (2 pins) | 175 VAC/247 VDC | Yes |
| HSEC8-EM | 0.80 mm | 20-120 | Black LCP | BeCu | -55 °C to +125 °C | 2.8 A (2 pins) | 240 VAC/339 VDC | Yes |
| HSEC8-PE | 0.80 mm | 20-40 | Black LCP | BeCu | -55 °C to +125 °C | 2.8 A (2 pins) | 240 VAC/339 VDC | Yes |
| HSEC8-PV | 0.80 mm | 40-80 | Black LCP | BeCu | -55 °C to +125 °C | 3.2 A (2 pins) | 215 VAC/304 VDC | Yes |
| HSEC8-DP | 0.80 mm | 16-112 | Black LCP | BeCu | -55 °C to +125 °C | 2.7 A (2 pins) | 235 VAC/332 VDC | Yes |
| HSEC1 | 1.00 mm | 20-140 | Black LCP | Phosphor Bronze | -55 °C to +125 °C | 2.2 A (2 pins) | 215 VAC/304 VDC | Yes |

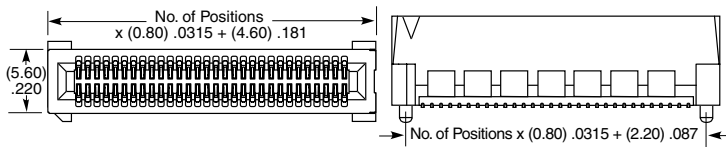
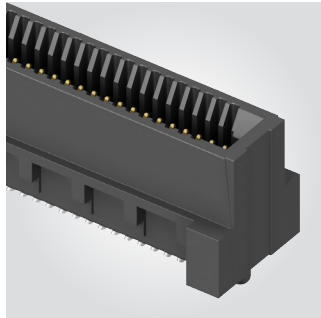
(0.80 mm) .0315" PITCH • VERTICAL EDGE CARD SOCKET

| HSEC8 | 1 | POSITIONS PER ROW | CARD THICKNESS | PLATING OPTION | DV | A | OTHER OPTIONS | "X"R |
|-------|---|---|--|---|----|---|---|--|
| | | 09, 10, 13, 20, 25, 30, 37, 40, 49, 50, 60, 70, 80, 100 (13, 25, 49 only available with -L or -L2 latching option; 09 only available with -L2 option; 37 only available with -L latching option) | -01 = (1.60 mm) .062" thick card -03 = (2.36 mm) .093" thick card | -L = 10 μ" (0.25 μm) Gold on contact area, Matte Tin on tail | | | -K = Polyimide Pick & Place Pad -BL = Board Locks; -01 card only (Weld tab standard) -L = Latching Option; -01 card only (13, 25, 37, 49 only) (Weld tab standard) -L2 = ECDP Latching; -01 card only (09, 13, 25, 49 only) (For use with ECDP) (Weld tab standard) -WT = Weld tab | Leave blank for Tray Packaging -TR = Tape & Reel (09 - 70 only) -FR = Full Reel Tape & Reel (must order max. quantities per reel; contact Samtec for quantity breaks) (09-70 only) |

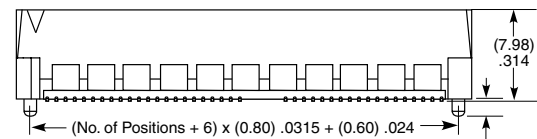
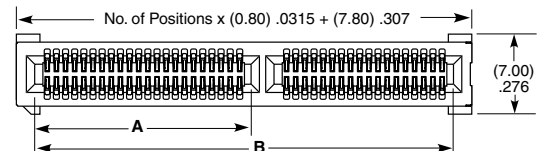
HSEC8-DV

Card Mates:
(1.60 mm) .062" thick card,
(2.36 mm) .093" thick card,
HSC8

Cable Mates:
ECDP



10, 20, & 30 POSITIONS



09, 13, 25, 37 & 40 THRU 100 POSITIONS

OTHER SOLUTIONS

For complete edge card system with cards and sockets, visit samtec.com?RU8

For a card to mate with an HSEC8 socket, visit samtec.com?HSC8



| POSITIONS PER ROW | A | B | CABLE | CONNECTOR |
|-------------------|---------------|---------------|---------|--------------|
| 09*† | (4.50) .177 | (11.80) .465 | ECDP-04 | HSEC8-109-L2 |
| 13*† | (6.10) .240 | (15.00) .591 | ECDP-08 | HSEC8-113-L2 |
| 25*† | (6.10) .240 | (24.60) .969 | ECDP-16 | HSEC8-125-L2 |
| 37† | (18.10) .713 | (34.20) 1.346 | ECDP-32 | HSEC8-149-L2 |
| 40 | (18.90) .744 | (36.60) 1.441 | | |
| 49*† | (22.90) .902 | (43.80) 1.724 | | |
| 50 | (22.90) .902 | (44.60) 1.756 | | |
| 60 | (26.90) 1.059 | (52.60) 2.071 | | |
| 70† | (26.90) 1.059 | (60.60) 2.386 | | |
| 80† | (26.90) 1.059 | (68.60) 2.701 | | |
| 100† | (26.90) 1.059 | (84.60) 3.331 | | |

Positions where no dimensions are given do not have keying feature.

* Mates with ECDP Series

† Available with -01 Card Only

Note:
Some sizes, styles and options are non-standard, non-returnable.

View complete specifications at: samtec.com?HSEC8-DV