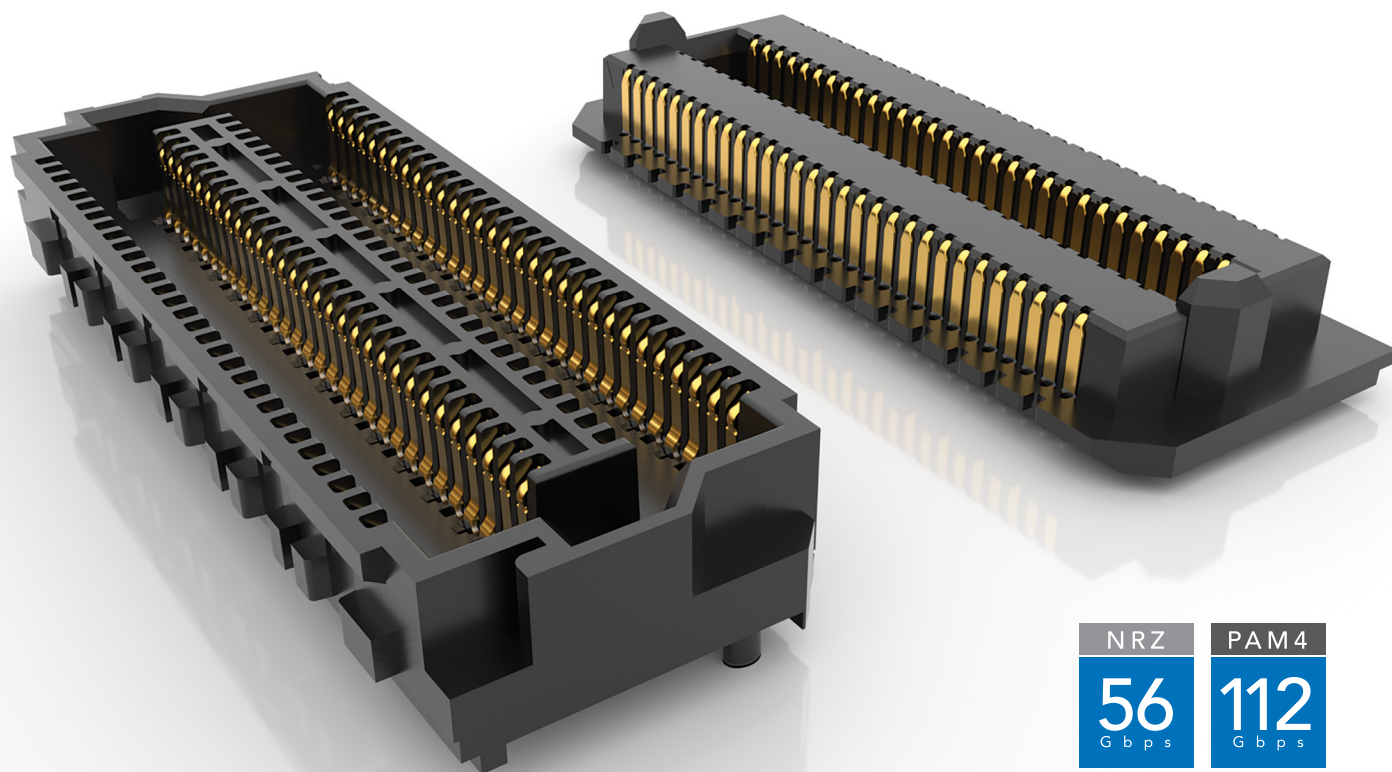


# ACCELERATE<sup>®</sup>HP

## HIGH-PERFORMANCE ARRAY SYSTEM

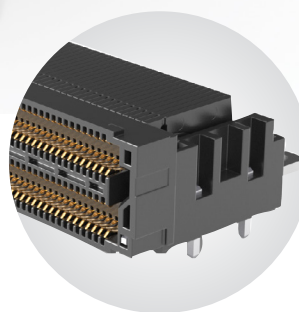
(0.635 mm) .025" PITCH



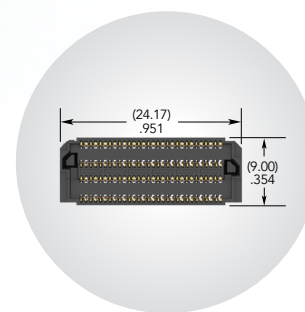
NRZ	PAM4
56 Gbps	112 Gbps

### FEATURES & BENEFITS

- Flexible open-pin-field and extreme performance solution
- Low profile 5 mm and up to 10 mm stack heights
- 0.635 mm pitch
- Up to 800 total pins; roadmap to 1,000+ pins
- Data rate compatible with PCIe<sup>®</sup> 6.0/CXL<sup>®</sup> 3.1 and 100 GbE
- Road Map: 6 and 10 rows, additional position counts



Right-angle connector  
([samtec.com?APF6-RA](https://www.samtec.com?APF6-RA))



APF6 Series; 120 pins

### KEY SPECIFICATIONS (APM6/APF6)

TOTAL PINS	INSULATOR MATERIAL	CONTACT MATERIAL	PLATING	OPERATING TEMP RANGE	CURRENT RATING	VOLTAGE RATING	LEAD-FREE SOLDERABLE
40 - 800	Black LCP	Copper Alloy	Au or Sn over 50 $\mu$ " (1.27 $\mu$ m) Ni	-55 °C to +125 °C	1.2 A (4 pins powered)	150 VAC/212 VDC	Yes

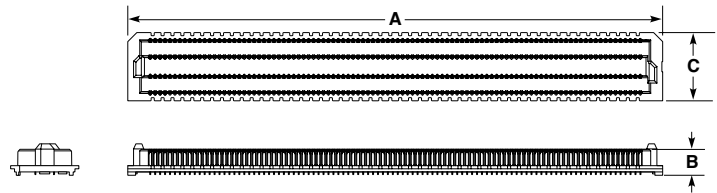
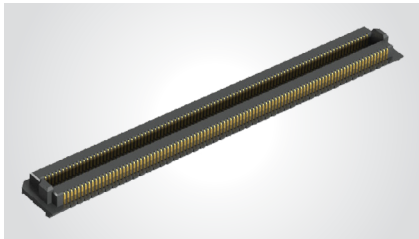
PCI-SIG<sup>®</sup>, PCI Express<sup>®</sup> and the PCIe<sup>®</sup> design marks are registered trademarks and/or service marks of PCI-SIG.

# (0.635 mm) .025" PITCH • 112 Gbps PAM4 OPEN-PIN-FIELD ARRAYS

SERIES	NO. OF POSITIONS	LEAD STYLE	PLATING OPTION	NO. OF ROWS	0	OPTION	"X"R
APM6 Terminal	-020, -040, -060, -100 (per row)	-01.5 = 1.5 mm (APM6 only)	-L = 10 μ" (0.25 μm) Gold on contact area, Matte Tin on tail	-04 = Four Rows		(Leave blank for no alignment pin)	-TR = Tape & Reel
APF6 Socket		-01.9 = 1.9 mm (APM6 only) (Only mates with an APF6-RA)		-08 = Eight Rows (Lead Style -01.5 & -03.5 with 100 Positions only)		-A = Alignment Pin	-FR = Full Reel Tape & Reel (must order max. quantity per reel; contact Samtec for quantity breaks)
		-06.5 = 6.5 mm (APM6 only)					
		-03.5 = 3.5 mm (APF6 only)					

**APM6  
Board Mates:**  
APF6, APF6-RA

**Standoffs:**  
GPSO



NO. OF POSITIONS PER ROW	A	LEAD STYLE	B	NO. OF ROWS	C
-020	(17.82) .701	-01.5	(3.33) .131	-04	(8.75) .344
-040	(30.52) 1.201	-01.9	(3.71) .146	-08	(17.95) .707
-060	(43.22) 1.701	-06.5	(8.33) .328		
-100	(68.62) 2.701				

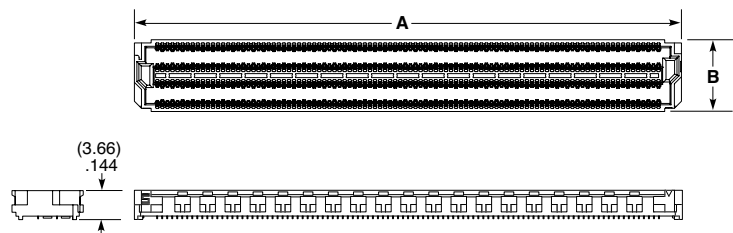
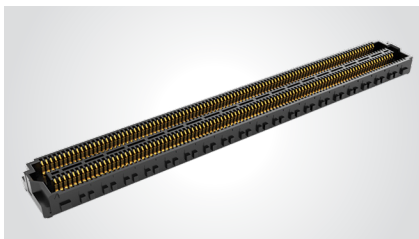
**ALSO AVAILABLE**  
Contact Samtec

Other platings

View complete specifications at: [samtec.com?APM6](http://samtec.com?APM6)

**APF6  
Board Mates:**  
APM6

**Standoffs:**  
GPSO



## MATED HEIGHTS \*

APF6 LEAD STYLE	APM6 LEAD STYLE	
	-01.5	-06.5
-03.5	(5.00 mm) .197"	(10.00 mm) .394"

\* Processing conditions will affect mated height.

## OTHER SOLUTIONS

Right-angle  
[samtec.com?APF6-RA](http://samtec.com?APF6-RA)

**Notes:**  
Some sizes, styles and options are non-standard, non-returnable

NO. OF POSITIONS PER ROW	A	NO. OF ROWS	B
-020	(17.82) .701	-04	(9.00) .354
-040	(30.52) 1.201	-08	(18.20) .717
-060	(43.22) 1.701		
-100	(68.62) 2.701		

View complete specifications at: [samtec.com?APF6](http://samtec.com?APF6)