

DO NOT
SCALE FROM
THIS PRINT**THIS PRODUCT MANUFACTURED
WITH LEAD-FREE PROCESSING****DESIGNED & DIMENSIONED
IN METRIC [INCHES]**

MPSS-XX-XX-X-XX.XX-XX-XXX

No OF POSITIONS

-02: 2 POSITIONS
-03: 3 POSITIONS
-04: 4 POSITIONS
-06: 6 POSITIONS
-08: 8 POSITIONS

LEAD STYLE

*-10: 10 AWG 600 V (C- 246-02-X)
*-12: 12 AWG 600 V (C- 246-02-X)
-14: 14 AWG 600 V (C- 246-01-X)
-16: 16 AWG 600 V (C- 246-01-X)

SECOND END OPTION
(ONLY AVAILABLE WITH -DR OPTION)
-NUS: NOTCH UP STRAIGHT
-NDS: NOTCH DOWN STRAIGHT

END OPTION

-SR: SINGLE END
-DR: DOUBLE END

ASSEMBLY LENGTH (INCHES)
03.25[82.5] MINIMUM LENGTH

PLATING SPECIFICATION

-L: 10μ" LIGHT SELECTIVE GOLD IN CONTACT AREA
BRIGHT ACID TIN ON TAIL
-T: BRIGHT ACID TIN CONTACT AND TAIL

* = NOT TOOLED

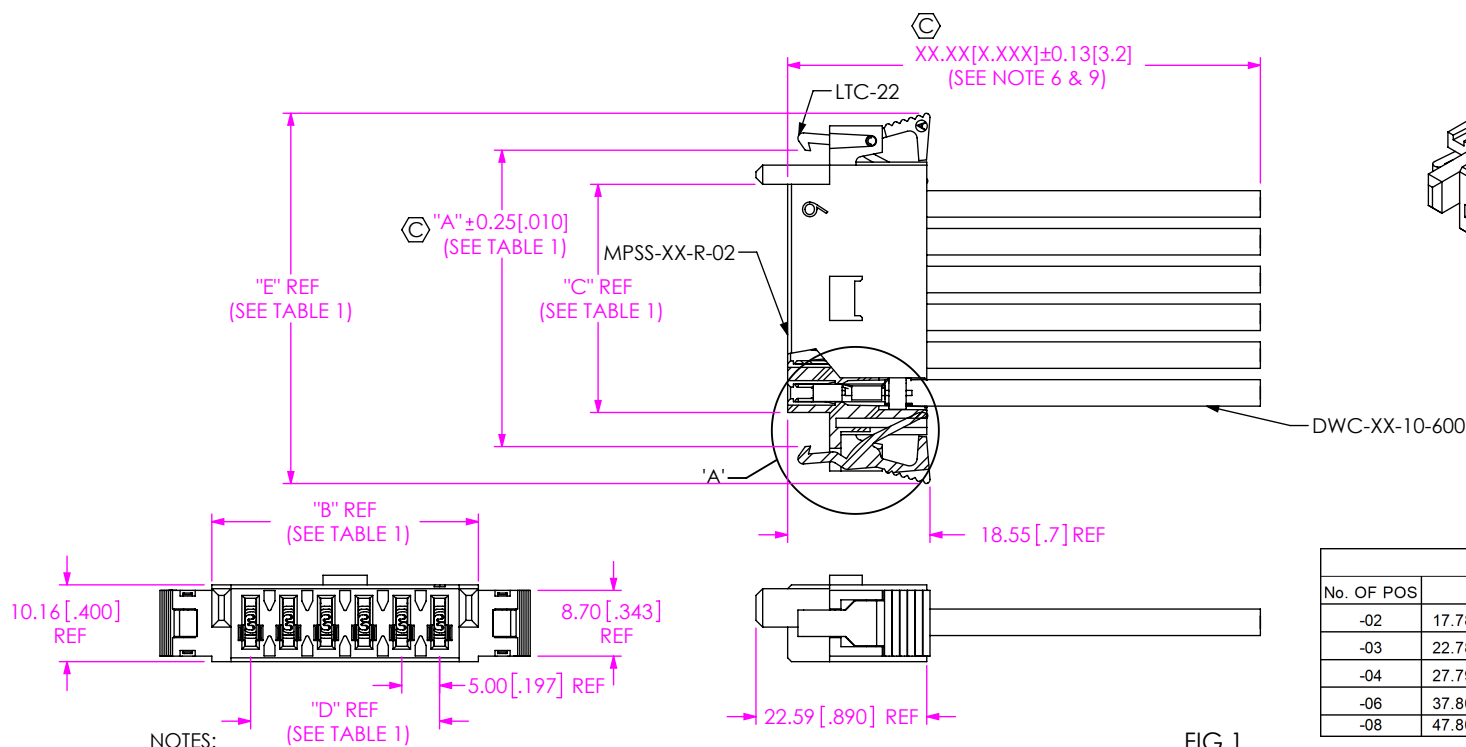


TABLE 1					
No. OF POS	"A"	"B"	"C"	"D"	"E"
-02	17.78 [0.700]	15.27 [0.601]	10.19 [0.401]	5.00 [0.197]	30.07 [1.184]
-03	22.78 [0.897]	20.26 [0.798]	15.18 [0.598]	10.00 [0.394]	35.07 [1.381]
-04	27.79 [1.094]	25.25 [0.994]	20.17 [0.794]	15.01 [0.591]	40.08 [1.578]
-06	37.80 [1.488]	35.26 [1.388]	30.18 [1.188]	24.99 [0.984]	50.09 [1.972]
-08	47.80 [1.882]	45.26 [1.782]	40.18 [1.582]	35.00 [1.378]	60.10 [2.366]

FIG 1
(MPSS-106-14-X-XX.XX-SR SHOWN)

c:\enterprisevault\DWG\MISC\MKTG\MPSS-XX-XX-X-XX.XX-XX-XXX-MKT.SLDDRW

- NOTES:
1. Ⓢ REPRESENTS A CRITICAL DIMENSION.
 2. ALL ASSEMBLIES TO BE 100% HI-POT TESTED AT 1000V AND ELECTRICALLY TESTED FOR SHORTS AND OPENS. AFTER FINAL ELECTRICAL TEST, MARK EACH ASSEMBLY PER INSTRUCTIONS REFERENCED IN CO-{AD-ID}-WI-3092-M.
 3. MINIMUM LATCH RETENTION: 4.4 N [1 LB].
 4. MINIMUM PULL OUT FORCE: 22.2 N [5.0 LB] MINIMUM.
 5. PARTS TO BE LAYER PACKAGED. COVER EACH CABLE END WITH BAG ASBBLT4X5.5. FOR VERY SHORT CABLES THAT WILL FIT 100% WITHIN ONE BAG, USE ONLY ONE BAG AND SEAL.
 6. ALL DIMS SHOWN IN METRIC EXCEPT FOR ASSEMBLY LENGTH ON PART CALL OUT.
 7. NOT FOR SALE AS COMPONENTS; SOLD AS A CABLE ASSEMBLY ONLY.
 8. REFER TO CRIMP SPECIFICATIONS PRINT FOR CRIMP AND STRIP DIMENSIONS, TOLERANCES, TOOLING AND ITS REQUIREMENTS.
 9. CUT LENGTH IS ASSEMBLY LENGTH MINUS CUT SUBTRACTOR.
FOR LENGTHS OF 12.00 INCHES AND LESS, TOLERANCE TO BE ± 0.13 [3.2],
FOR LENGTHS GREATER THAN 12.00 INCHES, TOLERANCE TO BE ± 2%.

UNLESS OTHERWISE SPECIFIED,
DIMENSIONS ARE IN MILLIMETERS.

TOLERANCES ARE:

DECIMALS ANGLES
X.X: ±0.3 [0.1]
X.XX: ±0.13 [0.05]
X.XXX: ±0.051 [0.020]

PROPRIETARY NOTE

THIS DOCUMENT CONTAINS CONFIDENTIAL AND PROPRIETARY INFORMATION AND ALL DESIGN, MANUFACTURING, REPRODUCTION, USE, PATENT RIGHTS AND SALES RIGHTS ARE EXPRESSLY RESERVED BY SAMTEC, INC. THIS DOCUMENT SHALL NOT BE DISCLOSED, IN WHOLE OR PART, TO ANY UNAUTHORIZED PERSON OR ENTITY NOR REPRODUCED, TRANSFERRED OR INCORPORATED IN ANY OTHER PROJECT IN ANY MANNER WITHOUT THE EXPRESS WRITTEN CONSENT OF SAMTEC, INC.

MATERIAL: DO NOT SCALE DRAWING
INSULATOR: POLYAMIDE, COLOR: BLACK
CONTACT: COPPER ALLOY
LATCH: POLYAMIDE, COLOR: BLACK
WIRE: PVC COATED TINNED COPPER

SHEET SCALE: 1:1

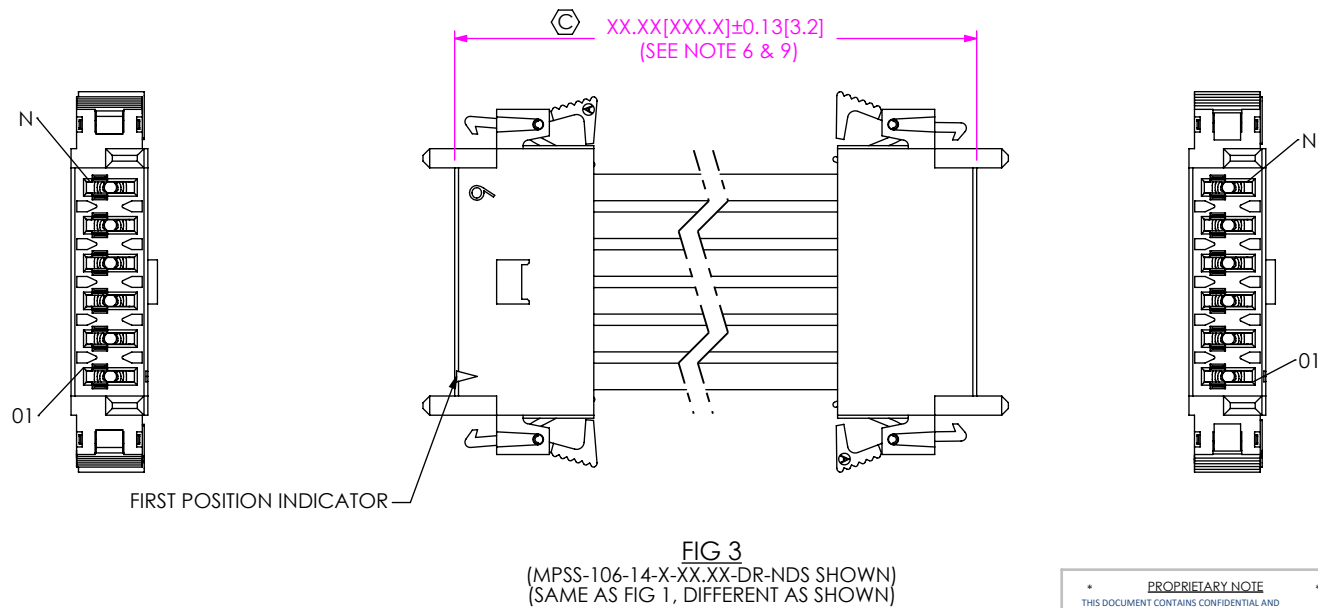
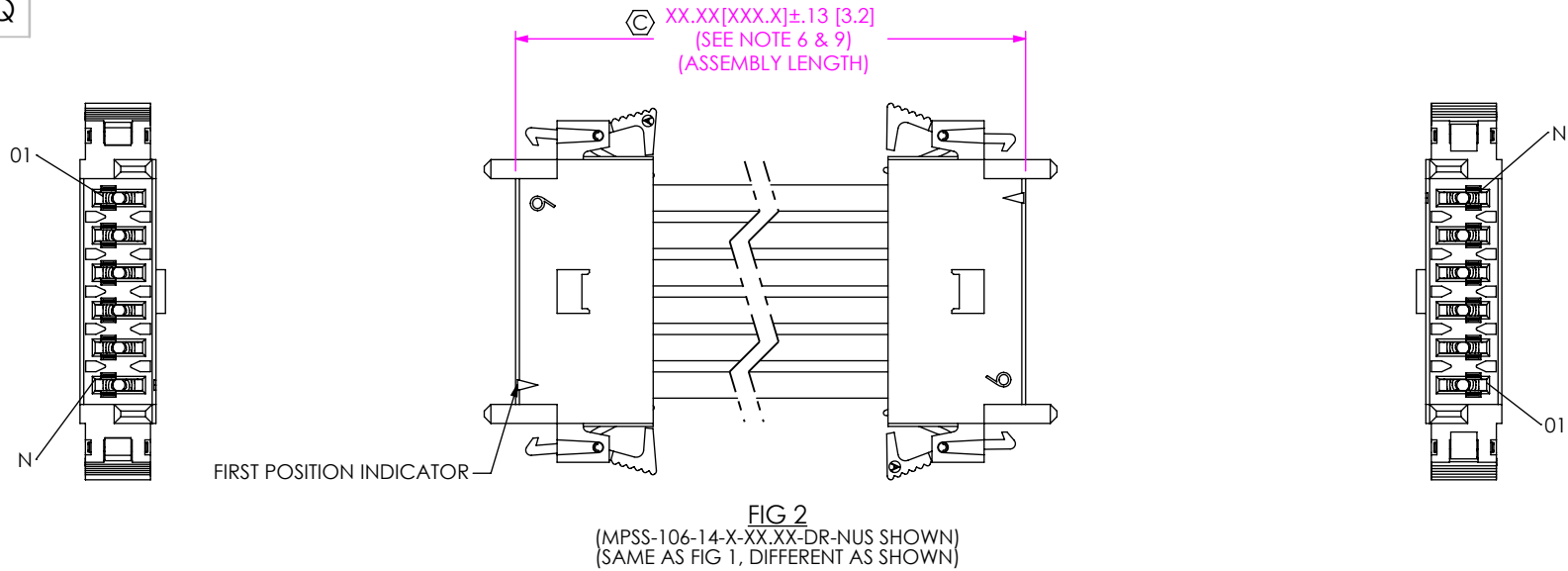
samtec


520 PARK EAST BLVD, NEW ALBANY, IN 47150
PHONE: 812-944-6733 FAX: 812-948-5047
e-Mail: info@SAMTEC.com code 55322

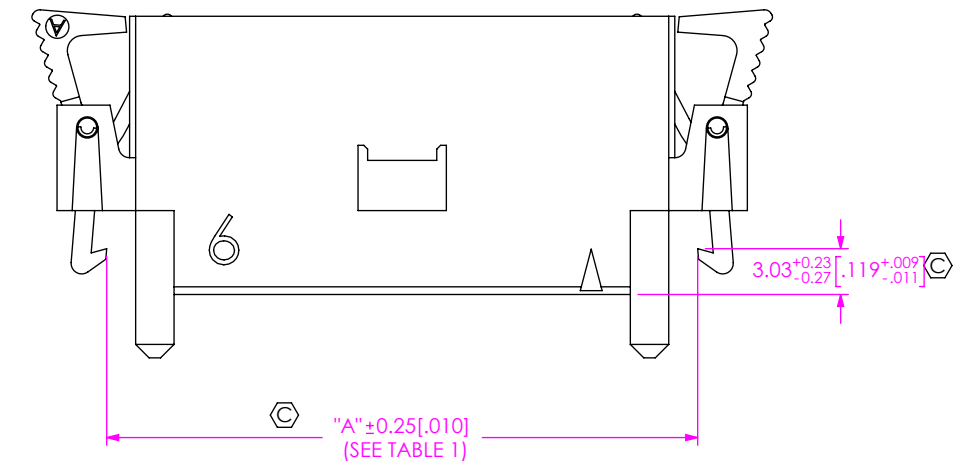
DESCRIPTION:
MINI POWER DISCRETE WIRE

DWG. NO.
MPSS-XX-XX-X-XX.XX-XX-XXX

BY: B RAY 05/09/2008 SHEET 1 OF 3



<p>* PROPRIETARY NOTE *</p> <p>THIS DOCUMENT CONTAINS CONFIDENTIAL AND PROPRIETARY INFORMATION AND ALL DESIGN, MANUFACTURING, REPRODUCTION, USE, PATENT RIGHTS AND SALES RIGHTS ARE EXPRESSLY RESERVED BY SAMTEC, INC. THIS DOCUMENT SHALL NOT BE DISCLOSED, IN WHOLE OR PART, TO ANY UNAUTHORIZED PERSON OR ENTITY NOR REPRODUCED, TRANSFERRED OR INCORPORATED IN ANY OTHER PROJECT IN ANY MANNER WITHOUT THE EXPRESS WRITTEN CONSENT OF SAMTEC, INC.</p> <p>DO NOT SCALE DRAWING</p> <p>SHEET SCALE: 1:1</p>	 <p>520 PARK EAST BLVD, NEW ALBANY, IN 47150 PHONE: 812-944-6733 FAX: 812-948-5047 e-Mail info@SAMTEC.com code 55322</p>	
	DESCRIPTION: MINI POWER DISCRETE WIRE	
	DWG. NO. MPSS-XX-XX-X-XX.XX-XX-XXX	
	BY: B RAY	05/09/2008



IN PROCESS

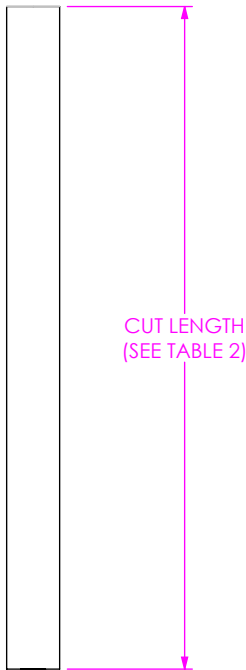
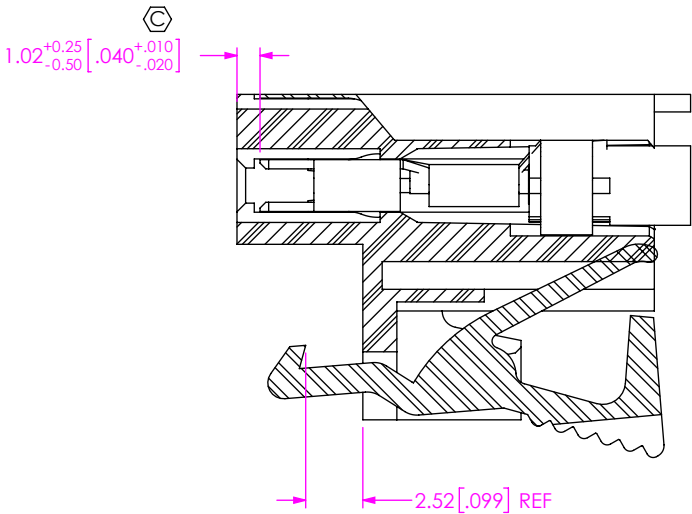


TABLE 2 (CUT SUBTRACTORS) (SEE NOTE 9)	
	LENGTH
-S: SINGLE END	7.62 [.300]
-D: DOUBLE END	15.24 [.600]

FIG 4



DETAIL 'A'
SCALE 3 : 1

PROPRIETARY NOTE

THIS DOCUMENT CONTAINS CONFIDENTIAL AND PROPRIETARY INFORMATION AND ALL DESIGN, MANUFACTURING, REPRODUCTION, USE, PATENT RIGHTS AND SALES RIGHTS ARE EXPRESSLY RESERVED BY SAMTEC, INC. THIS DOCUMENT SHALL NOT BE DISCLOSED, IN WHOLE OR PART, TO ANY UNAUTHORIZED PERSON OR ENTITY NOR REPRODUCED, TRANSFERRED OR INCORPORATED IN ANY OTHER PROJECT IN ANY MANNER WITHOUT THE EXPRESS WRITTEN CONSENT OF SAMTEC, INC.

DO NOT SCALE DRAWING

SHEET SCALE: 1:1

520 PARK EAST BLVD, NEW ALBANY, IN 47150
PHONE: 812-944-6733 FAX: 812-948-5047
e-Mail info@SAMTEC.com code 55322

DESCRIPTION:
MINI POWER DISCRETE WIRE

DWG. NO.
MPSS-XX-XX-X-XX.XX-XX-XXX

BY: B RAY 05/09/2008 SHEET 3 OF 3