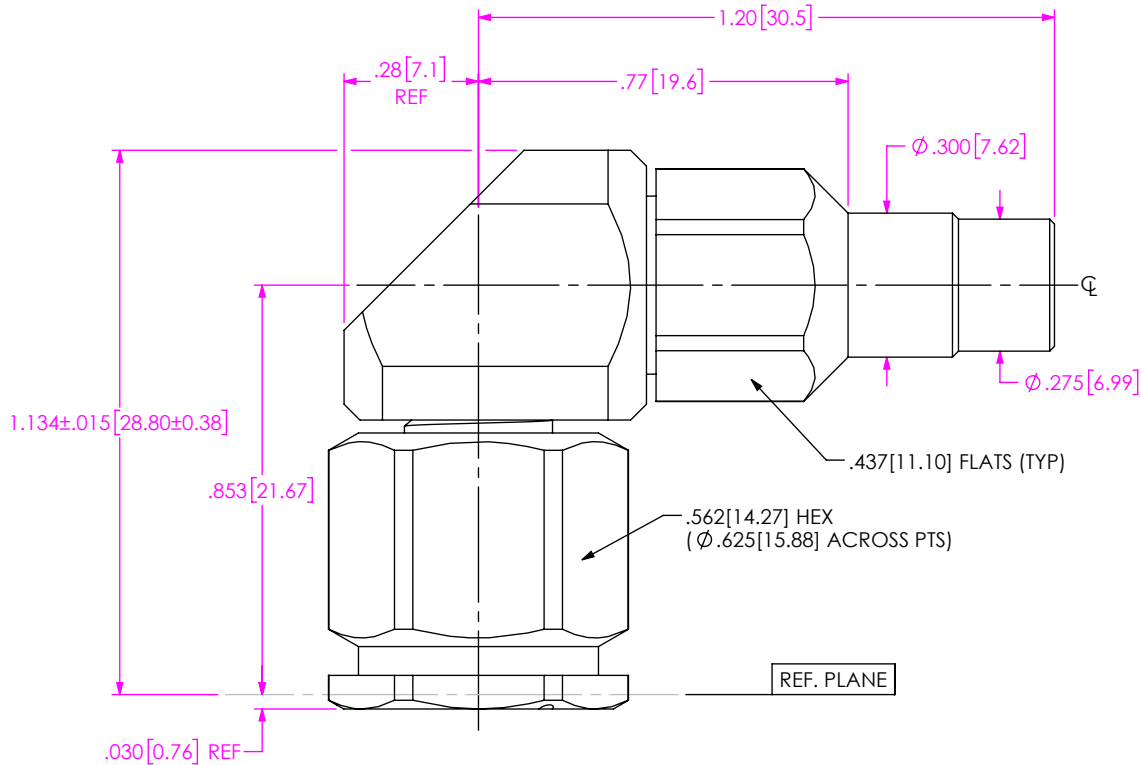


DO NOT
SCALE FROM
THIS PRINT



PRF04-P-C-EP-142-RS

SERIES
-04: TNCA

GENDER
-P: PLUG

TYPE
-C: CABLE

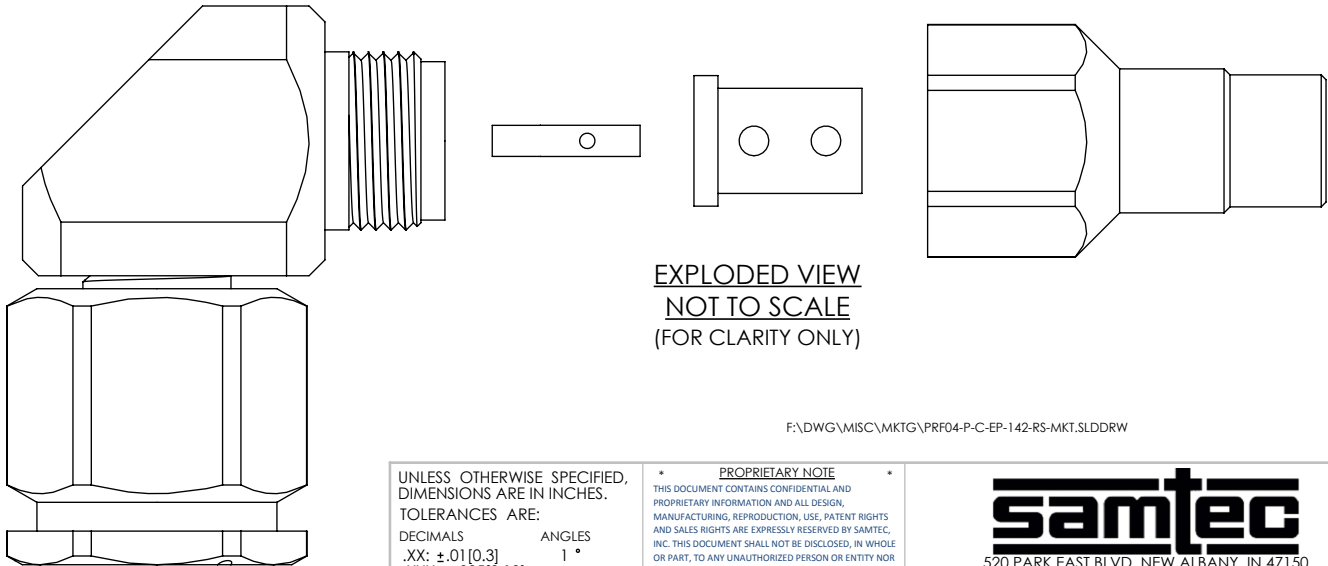
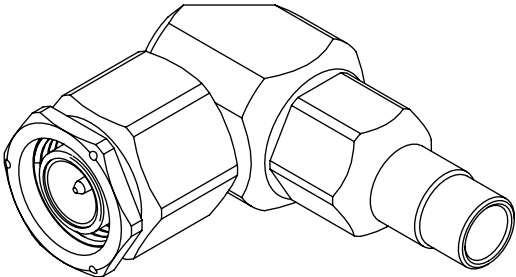
FINISH
-EP: 50µ" EXTRA HEAVY GOLD
CENTER CONTACT,
PASSIVATED OUTER CONTACT

TERMINATION
S: SOLDER CLAMP

ORIENTATION
-R: RIGHT ANGLE

CABLE TYPE
-142: HARBOUR LL142

**DESIGNED & DIMENSIONED
IN INCHES[MILLIMETERS]**



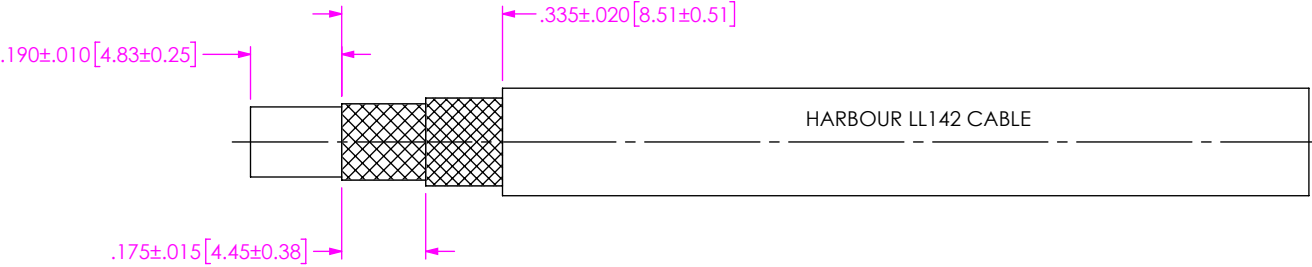
EXPLODED VIEW
NOT TO SCALE
(FOR CLARITY ONLY)

NOTES:

- MATERIAL:
BODIES, COUPLING NUT, CLAMP NUT: STAINLESS STEEL
CONTACTS, LOCK RING: BERYLLIUM COPPER
SOLDER FERRULE: BRASS ALLOY
INSULATORS: PTFE
GASKET: SILICONE RUBBER
- FINISH:
BODIES, COUPLING NUT, CLAMP NUT: PASSIVATED
CONTACTS, SOLDER FERRULE: 50µ" MIN. GOLD OVER 50µ" MIN. NICKEL PLATE
- PCI P/N: 3369

UNLESS OTHERWISE SPECIFIED, DIMENSIONS ARE IN INCHES. TOLERANCES ARE: DECIMALS ANGLES .XX: ±.01 [0.3] 1° .XXX: ±.005 [0.13] .XXXX: ±.0005 [0.013]		PROPRIETARY NOTE THIS DOCUMENT CONTAINS CONFIDENTIAL AND PROPRIETARY INFORMATION AND ALL DESIGN, MANUFACTURING, REPRODUCTION, USE, PATENT RIGHTS AND SALES RIGHTS ARE EXPRESSLY RESERVED BY SAMTEC, INC. THIS DOCUMENT SHALL NOT BE DISCLOSED, IN WHOLE OR PART, TO ANY UNAUTHORIZED PERSON OR ENTITY NOR REPRODUCED, TRANSFERRED OR INCORPORATED IN ANY OTHER PROJECT IN ANY MANNER WITHOUT THE EXPRESS WRITTEN CONSENT OF SAMTEC, INC.	
DO NOT SCALE DRAWING		SHEET SCALE: 2.5:1	
		DESCRIPTION: TNCA RT. ANGLE PLUG. SOLDER CLAMP FOR HARBOUR LL142 CABLE	
		DWG. NO. PRF04-P-C-EP-142-RS	
BY: SHERRY W		11/14/2019	SHEET 1 OF 3

1A. TRIM CABLE AS SHOWN.

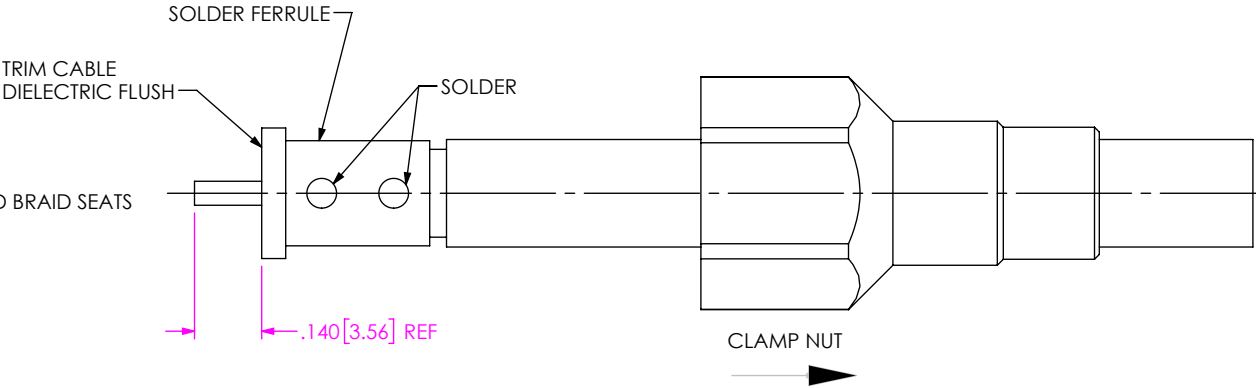


IN-PROCESS VIEW 1

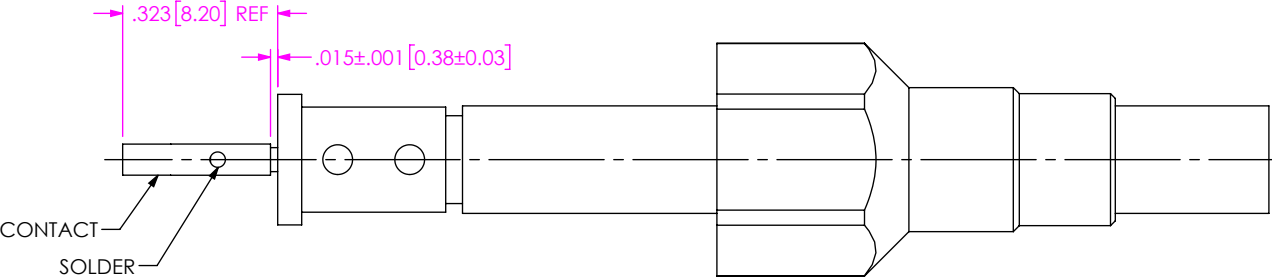
2A. SLIDE CLAMP NUT OVER CABLE AS SHOWN.

2B. INSERT CABLE INTO SOLDER FERRULE UNTIL FORWARD BRAID SEATS THEN SOLDER CABLE BRAIDS WHERE SHOWN.

2C. TRIM CABLE DIELECTRIC FLUSH TO SOLDER FERRULE.



IN-PROCESS VIEW 2



3. SOLDER CONTACT WITH GAP INDICATED AS SHOWN

IN-PROCESS VIEW 3

PROPRIETARY NOTE
THIS DOCUMENT CONTAINS CONFIDENTIAL AND PROPRIETARY INFORMATION AND ALL DESIGN, MANUFACTURING, REPRODUCTION, USE, PATENT RIGHTS AND SALES RIGHTS ARE EXPRESSLY RESERVED BY SAMTEC, INC. THIS DOCUMENT SHALL NOT BE DISCLOSED, IN WHOLE OR PART, TO ANY UNAUTHORIZED PERSON OR ENTITY NOR REPRODUCED, TRANSFERRED OR INCORPORATED IN ANY OTHER PROJECT IN ANY MANNER WITHOUT THE EXPRESS WRITTEN CONSENT OF SAMTEC, INC.

DO NOT SCALE DRAWING

SHEET SCALE: 2.5:1

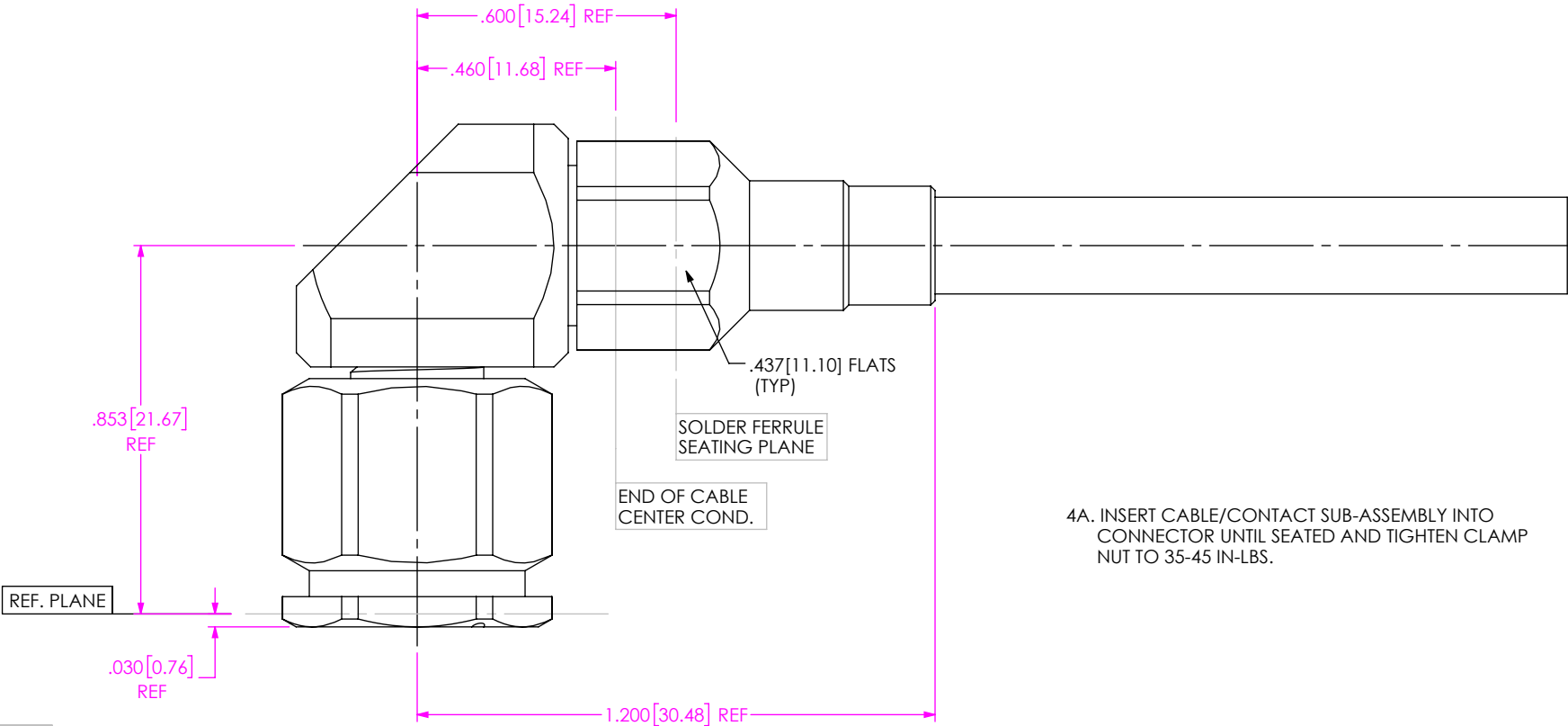
samtec

520 PARK EAST BLVD, NEW ALBANY, IN 47150
PHONE: 812-944-6733 FAX: 812-948-5047
e-Mail info@SAMTEC.com code 55322

DESCRIPTION: TNCA RT. ANGLE PLUG, SOLDER CLAMP FOR HARBOUR LL142 CABLE


DWG. NO. PRF04-P-C-EP-142-RS

BY: SHERRY W 11/14/2019 SHEET 2 OF 3



4A. INSERT CABLE/CONTACT SUB-ASSEMBLY INTO CONNECTOR UNTIL SEATED AND TIGHTEN CLAMP NUT TO 35-45 IN-LBS.

IN-PROCESS VIEW 4

<p>• PROPRIETARY NOTE •</p> <p>THIS DOCUMENT CONTAINS CONFIDENTIAL AND PROPRIETARY INFORMATION AND ALL DESIGN, MANUFACTURING, REPRODUCTION, USE, PATENT RIGHTS AND SALES RIGHTS ARE EXPRESSLY RESERVED BY SAMTEC, INC. THIS DOCUMENT SHALL NOT BE DISCLOSED, IN WHOLE OR PART, TO ANY UNAUTHORIZED PERSON OR ENTITY NOR REPRODUCED, TRANSFERRED OR INCORPORATED IN ANY OTHER PROJECT IN ANY MANNER WITHOUT THE EXPRESS WRITTEN CONSENT OF SAMTEC, INC.</p>		
	<p>520 PARK EAST BLVD, NEW ALBANY, IN 47150 PHONE: 812-944-6733 FAX: 812-948-5047 e-Mail info@SAMTEC.com code 55322</p>	
	DESCRIPTION:	TNCA RT. ANGLE PLUG, SOLDER CLAMP FOR HARBOUR LL142 CABLE
	DWG. NO.	PRF04-P-C-EP-142-RS
DO NOT SCALE DRAWING		
SHEET SCALE: 2.5:1		
BY: SHERRY W 11/14/2019 SHEET 3 OF 3		