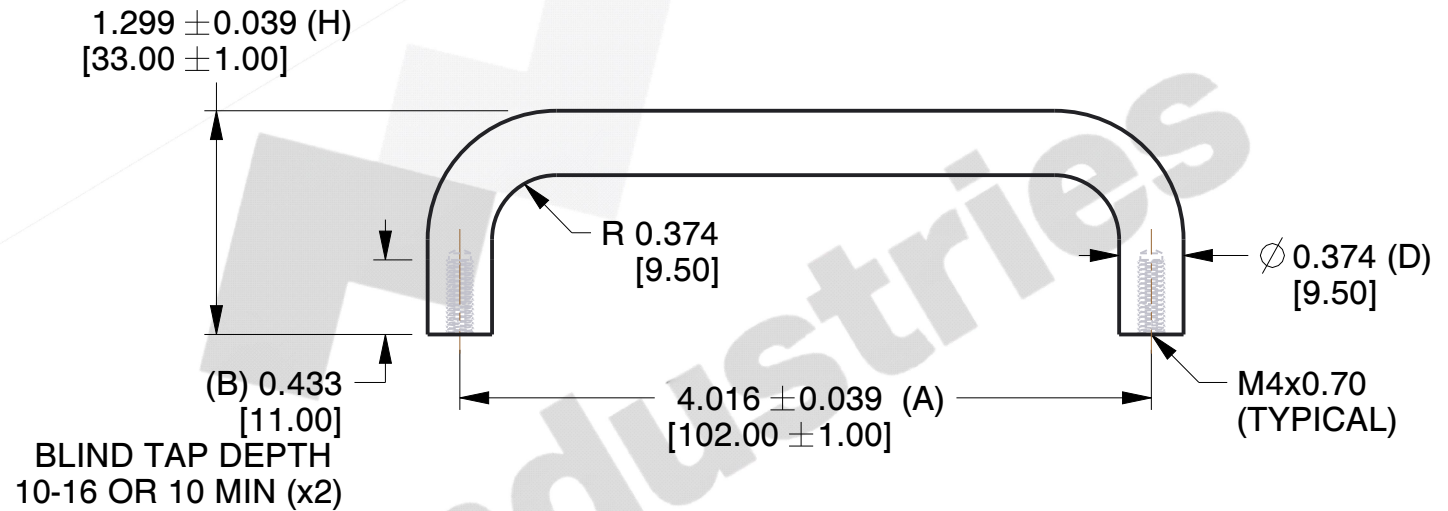
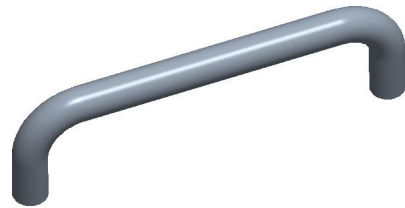



REV	CHANGE	DATE	DRN	CHK
	Drawn	12/20/16	SJ	T



**NOTES:**

1. Material : Stainless Steel (ASTM-A-581, A-582) (RoHS Comp.)
2. Finish :
3. % of Thread for Tapped Holes : Form Tap - 55 | Cut Tap - 65
- 4: Threads are Supplied Cut or Rolled at RAF's Option Unless Noted on Order.
5. Threads are to Commercial 2A and 2B Standards per Handbook H-28 (Part 1)
6. All Drawing Dimensions are in Inches Unless Noted Otherwise
7. ASME Y14.5M - 2009
8. Remove burrs and sharp edges
9. Changes may occur with no notice

9. Changes may occur with no notice			COMPONENT		HANDLES	
<div> <b>MW Industries</b> 95 Silvermine Rd., Seymour CT 06483 Tel: 203-888-2133, Fax: 203-888-9860</div>	This Drawing is the Property of MW Industries. It contains confidential, proprietary information that is MW Industries property. Do not disclose to or duplicate for others except as authorized by MW Industries.	<p><u>TOLERANCES</u> ALL DIMENSIONS ARE INCHES (UNLESS OTHERWISE SPECIFIED)</p> <p><u>METALLIC</u> LENGTHS &lt; / = : 6 INCHES ± 0.005 LENGTH &gt; : 6 INCHES ± 0.010 DIAMETERS: ± 0.005</p> <p><u>NON-METALLIC</u> LENGTH: ± 0.010 DIAMETERS: ± 0.010</p> <p><u>INTERNAL THREADS:</u> — MINIMUM THREAD DEPTH</p>	M6242-5008-SS		SCALE	
					0.90	
			ROUND INTERNAL THREAD HANDLE		SHEET	
					1 of 1	