



Product Compliance

[For compliance documentation, visit the product page on TE.com>](#)

EU RoHS Directive 2011/65/EU	Compliant
EU ELV Directive 2000/53/EC	Compliant
China RoHS 2 Directive MIIT Order No 32, 2016	No Restricted Materials Above Threshold
EU REACH Regulation (EC) No. 1907/2006	Current ECHA Candidate List: JUNE 2025 (250) Candidate List Declared Against: JUNE 2022 (224) Does not contain REACH SVHC
Halogen Content	Low Halogen - Br, Cl, F < 900 ppm per homogenous material. Also BFR/CFR/PVC Free
Solder Process Capability	Wave solder capable to 265°C

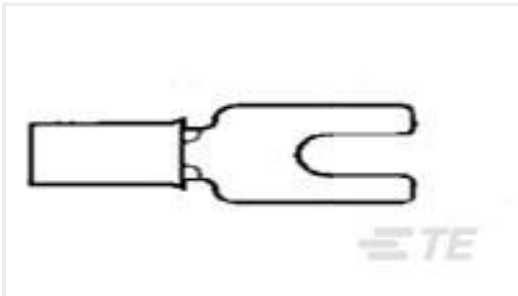
Product Compliance Disclaimer

This information is provided based on reasonable inquiry of our suppliers and represents our current actual knowledge based on the information they provided. This information is subject to change. The part numbers that TE has identified as EU RoHS compliant have a maximum concentration of 0.1% by weight in homogenous materials for lead, hexavalent chromium, mercury, PBB, PBDE, DBP, BBP, DEHP, DIBP, and 0.01% for cadmium, or qualify for an exemption to these limits as defined in the Annexes of Directive 2011/65/EU (RoHS2). Finished electrical and electronic equipment products will be CE marked as required by Directive 2011/65/EU. Components may not be CE marked. Additionally, the part numbers that TE has identified as EU ELV compliant have a maximum concentration of 0.1% by weight in homogenous materials for lead, hexavalent chromium, and mercury, and 0.01% for cadmium, or qualify for an exemption to these limits as defined in the Annexes of Directive 2000/53/EC (ELV). Regarding the REACH Regulation, the information TE provides on SVHC in articles for this part number is based on the latest European Chemicals Agency (ECHA) 'Guidance on requirements for substances in articles' posted at this URL: <https://echa.europa.eu/guidance-documents/guidance-on-reach>

Customers Also Bought



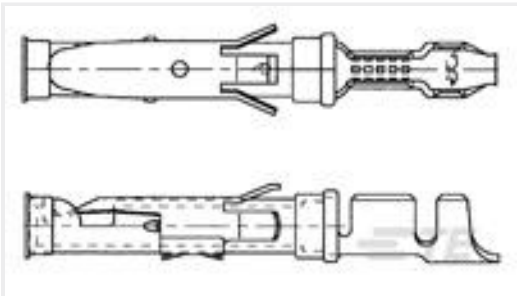
TE Part #32057
TERMINAL,PIDG SPD 16-14 10



TE Part #130524
BRAZED 22-16 SPADE #4



TE Part #142841-1
TUBING SPIRAP 500031-1



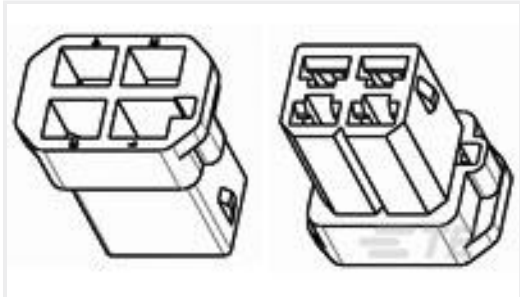
TE Part #164840-2
062 M SRS.SOCKET 3+



TE Part #202726-1
CONTACT SOCKET ASSY.



TE Part #207365-8
METRIMATE PIN HDR ASY,3P LF



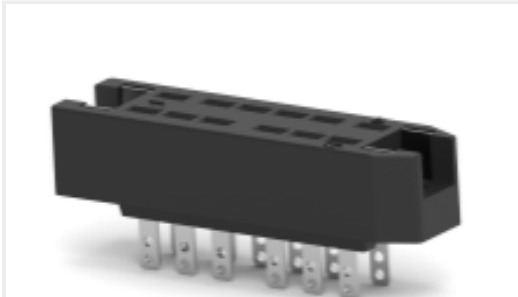
TE Part #626057
FASTIN-ON 110 HOUSING TAB NAT
6.6 NYLON



TE Part #8-1393806-6
V23154C 721B104



TE Part #5-1393801-0
V23030A2021A104



TE Part #1393725-4
C42334A 41A 6=RP622 FEDERLEI

Documents

CAD Files

3D PDF

3D

Customer View Model

ENG_CVM_CVM_8-1393818-0_A.2d_dxf.zip

English

Customer View Model

ENG_CVM_CVM_8-1393818-0_A.3d_igs.zip

English

Customer View Model

ENG_CVM_CVM_8-1393818-0_A.3d_stp.zip

English

By downloading the CAD file I accept and agree to the Terms and Conditions of use.

Product Specifications

Product Specification

English

Definitions General Purpose Relays

English

