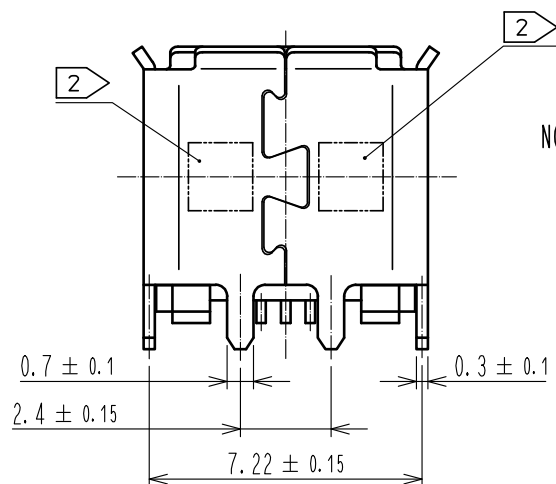
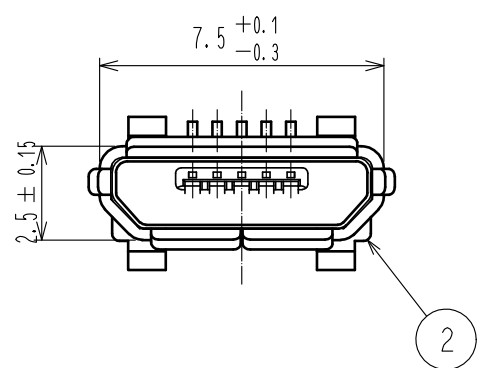
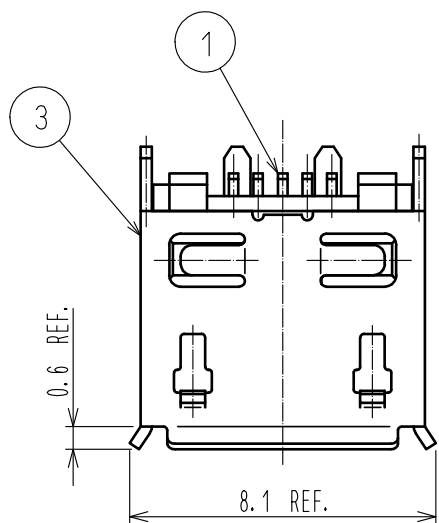


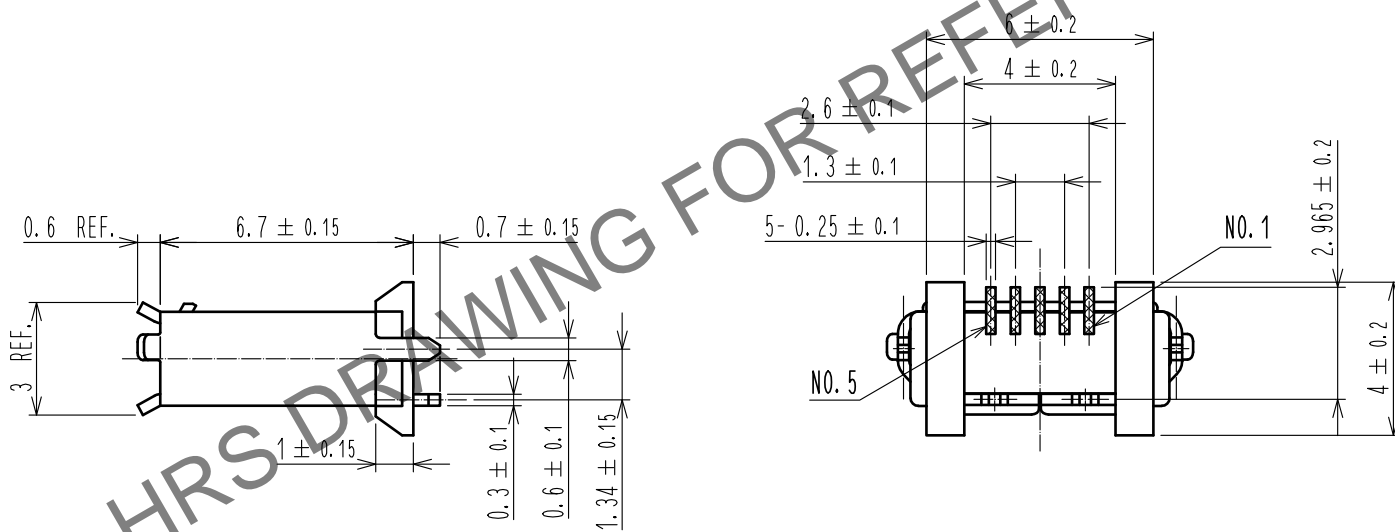
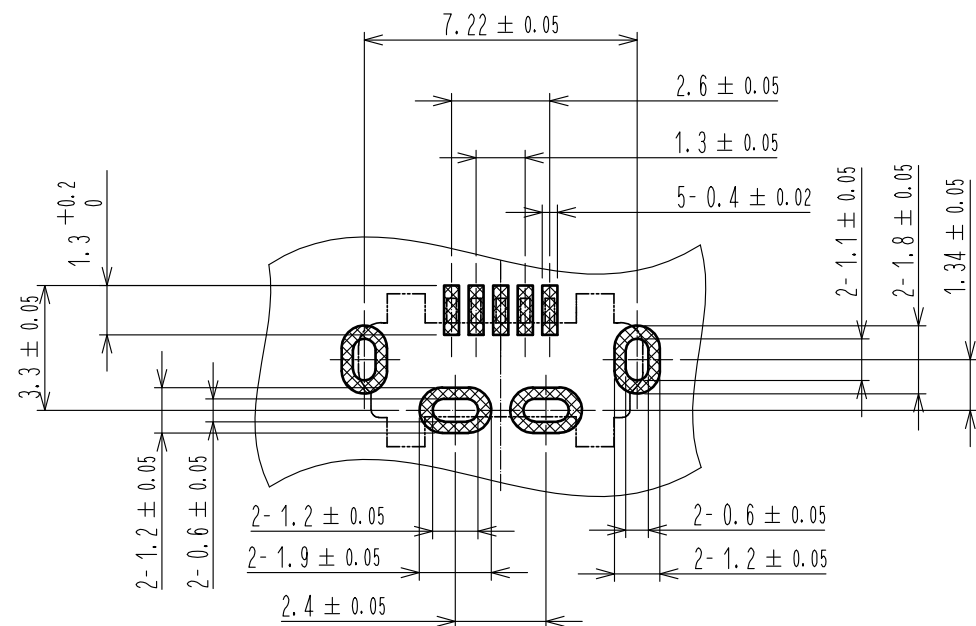
Nov.1.2025 Copyright 2025 HIROSE ELECTRIC CO., LTD. All Rights Reserved.
In case of consideration for using Automotive equipment / device which demand high reliability, kindly contact our sales window correspondents.

A
B
C
D
E
F

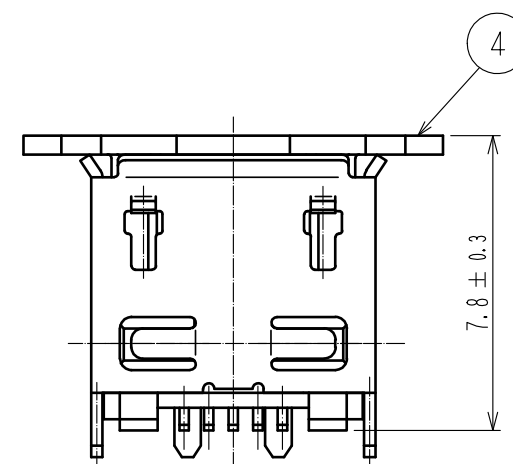
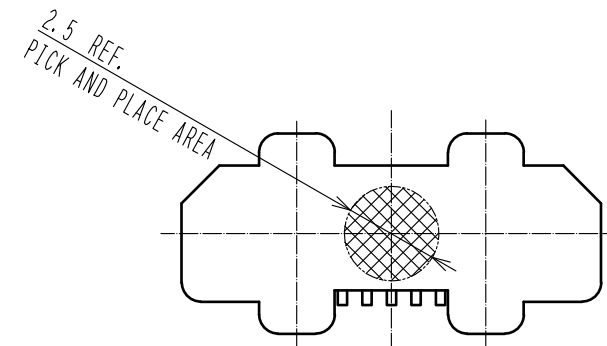


- NOTE
- 1 CO-PLANARITY IS WITHIN 0.08.
 - 2 LOT No. SHALL BE INDICATED AT THE POSITION AS SHOWN.
 - 3 PLATING
CONTACT AREA : GOLD PLATE $0.75\mu\text{m}$ MIN.
LEAD AREA : GOLD PLATE $0.05\mu\text{m}$ MIN.
UNDER PLATING : NICKEL $2\mu\text{m}$ MIN.
 - 4 PACKING
300 PCS PER TRAY.
 - 5 AS FOR PART No. 3, THE PERFORMANCE REMAINS GOOD EVEN IF THERE IS A RUBBING WOUND BY THE ASSEMBLY PROCESS. AND THE PERFORMANCE REMAINS GOOD EVEN IF THERE IS A DIFFERENCE OF THE COLOR OF PLATING WITH THE MANUFACTURING LOT.

PCB LAYOUT



PICK AND PLACE CAP



2	LCP	BLACK	UL94V-0	5	PS	
1	COPPER ALLOY	3		4	POLYAMIDE RESIN	
NO.	MATERIAL	FINISH . REMARKS	NO.	MATERIAL	FINISH . REMARKS	
UNITS mm		SCALE 5 : 1	COUNT 	DESCRIPTION OF REVISIONS		
APPROVED : NM. NISHIMATSU			15.10.27	DRAWING NO.		EDC-126723-30-00
CHECKED : KN. ICHIKAWA			15.10.27	PART NO.		ZX80-B-5P<30>
DESIGNED : TS. ITO			15.10.27	CODE NO.		CL242-0051-0-30
DRAWN : AK. AKIYAMA			15.10.27			

A
B
C
D
E
F

Nov.1.2025 Copyright 2025 HIROSE ELECTRIC CO., LTD. All Rights Reserved.
In case of consideration for using Automotive equipment / device which demand high reliability, kindly contact our sales window correspondents.

