

Dec.1.2025 Copyright 2025 HIROSE ELECTRIC CO., LTD. All Rights Reserved.
In case of consideration for using Automotive equipment / device which demand high reliability, kindly contact our sales window correspondents.

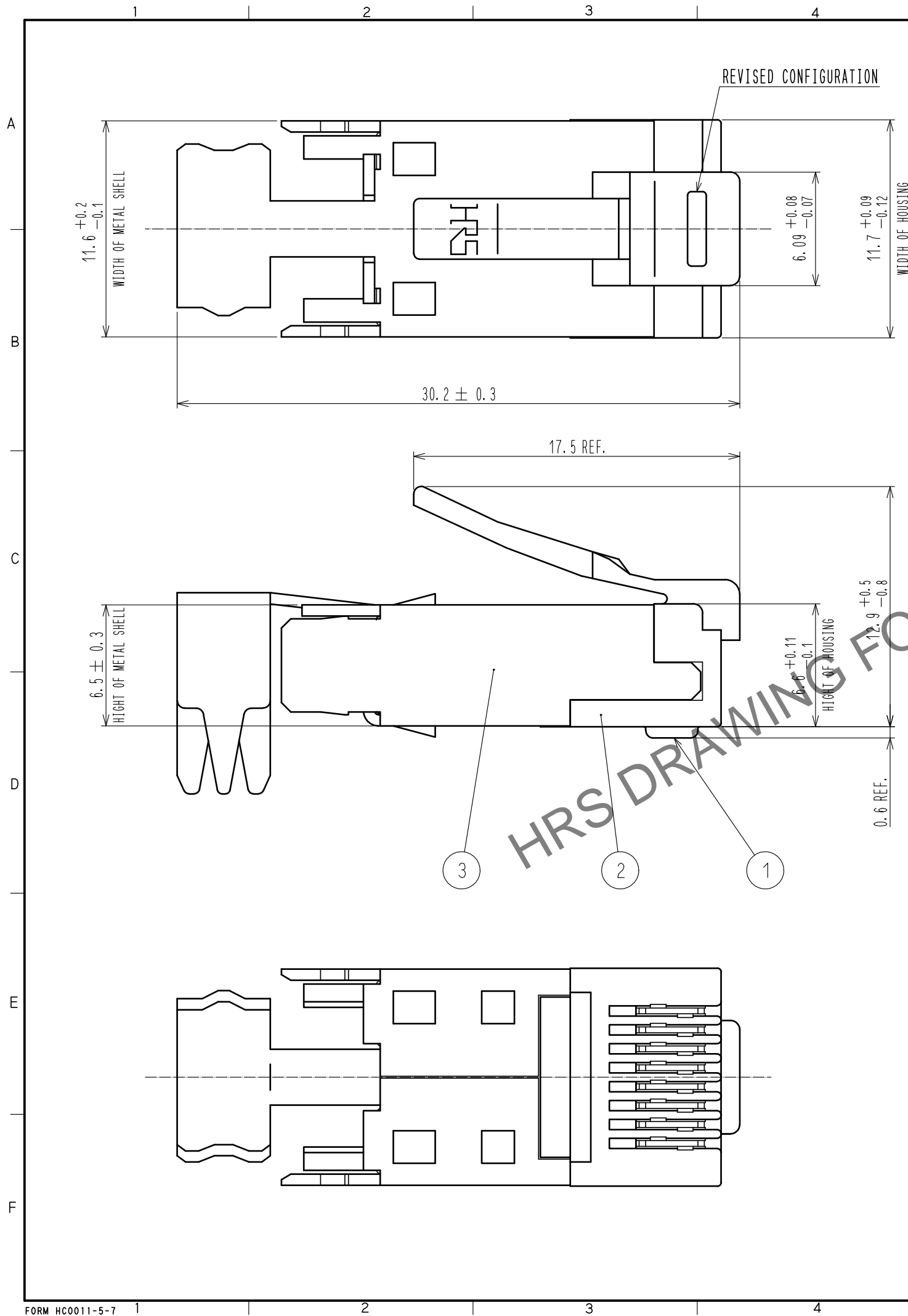
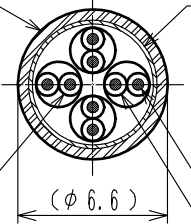
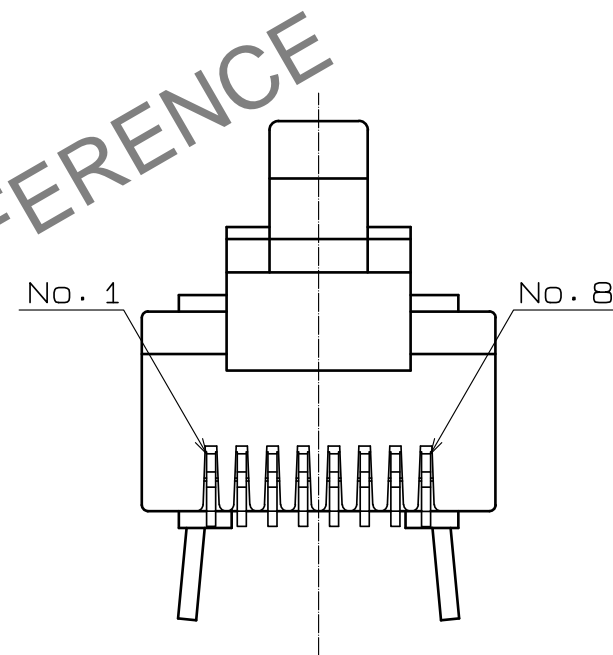



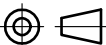


TABLE-1

APPLICABLE CABLE WIRE			
	CONDUCTOR	φ 0.5 SOLID WIRE	
		AWG#24 STRANDED WIRE (φ 0.2/7)	
		AWG#25 STRANDED WIRE (φ 0.18/7)	
	INSULATOR DIAMETER	(φ 0.9~φ 1.0)	
	JAKET DIAMETER	(φ 6.6)*1	

*1:THE OUTER DIAMETER OF THE VINYL JACKET VARIES SLIGHTLY
DEPENDING ON THE HARDNESS. 6.6 DIA. IS FOR REFERENCE.



- NOTES
1. THE DIMENSIONS IN PARENTHESIS ARE FOR REFERENCE.
 2. APPLICABLE CABLE IS SHOWN IN TABLE-1.
 3. TO SATISFY CAT5e PERFORMANCE, PLEASE ASSEMBLE ACCORDING TO HRS INSTRUCTION.
 4. APPLY SEPARATELY ORDERED GUIDE PLATE TM21P-88P(22) CL222-2862-9-22.
 5. THIS PRODUCT SATISFIES CAT6 REQUIREMENTS FOR BASIC LINK CONFIGURATION.
(THE CONNECTOR BY ITSELF IS NOT CAT6 COMPLIANT.)
COUNTERPART RECEPTACLE IS SHOWN BELOW.
TM21R-3C-88(**)
TM21R-5C-88(**)
TM21R-5C-88-LP(**)

1	PHOSPHOR BRONZE	CONTACT :Au PLATING 1.27 μm MIN LEAD :Au PLATING 0.03 μm MIN UNDER :Ni PLATING 2 μm MIN		3	BRASS	OVER :Sn REFLOW PLATING 1 μm MIN UNDER: Cu PLATING 0.5 μm MIN											
				2	POLYCARBONATE	(CLEAR RED) 											
NO.		MATERIAL		FINISH . REMARKS		NO.		MATERIAL		FINISH . REMARKS							
UNITS mm				SCALE 4:1				COUNT 1	DESCRIPTION OF REVISIONS DIS-E-00018150			DESIGNED MO. SHIMOYAMA		CHECKED KG. OKITA		DATE 20250403	
 HIROSE ELECTRIC CO., LTD.				APPROVED : HO. MIWA		20050105		DRAWING NO. EDC3-121484-05									
				CHECKED : TH. KAMEYA		20050105		PART NO. TM21P-88P(31)									
				DESIGNED : SS. SATOH		20050105		CODE NO. CL0222-2862-9-31									
				DRAWN : SS. SATOH		20050105		