

Jun.1.2025 Copyright 2025 HIROSE ELECTRIC CO., LTD. All Rights Reserved.  
In case of consideration for using Automotive equipment / device which demand high reliability, kindly contact our sales window correspondents.

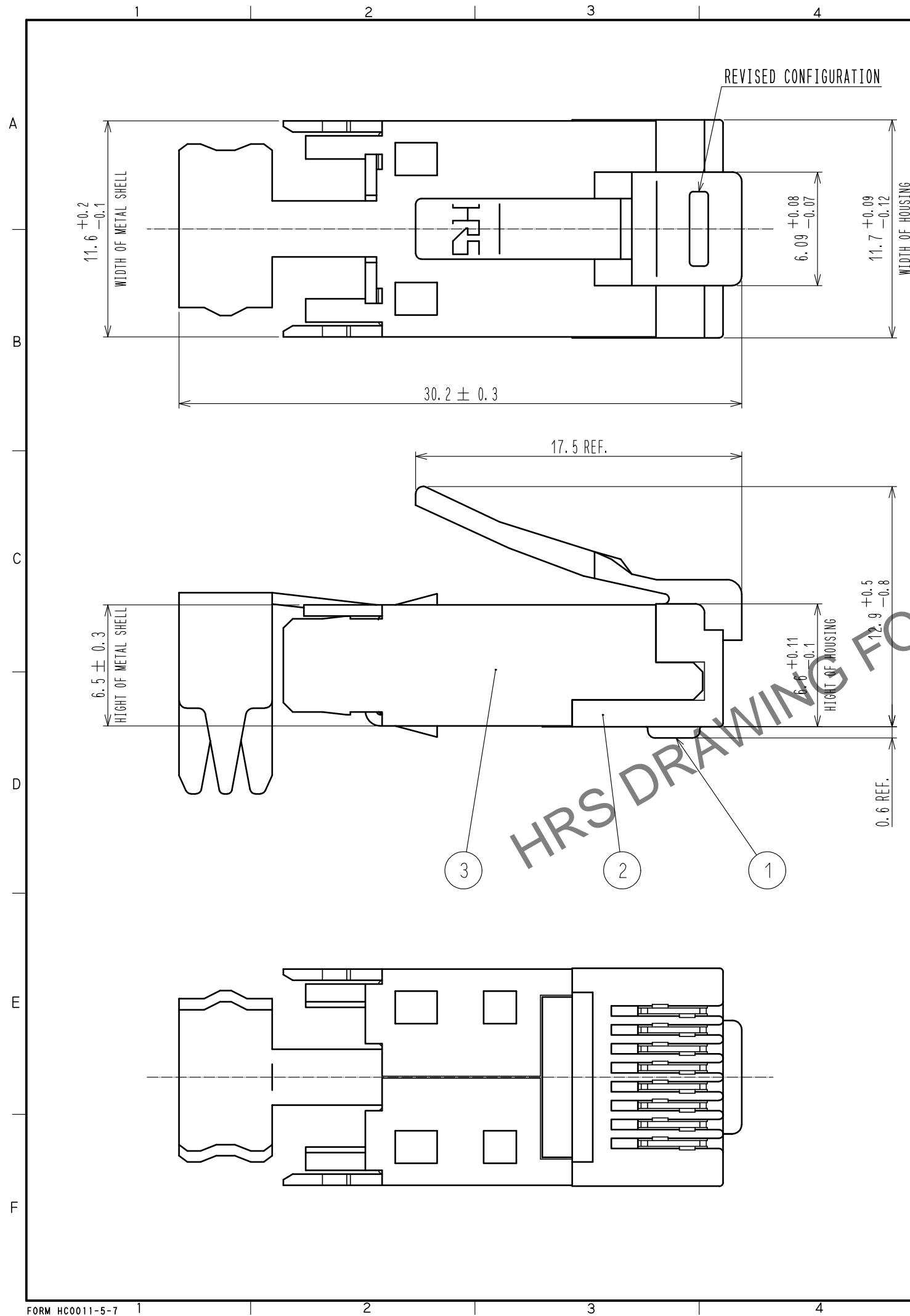
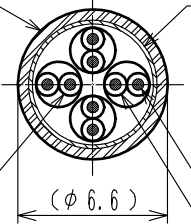
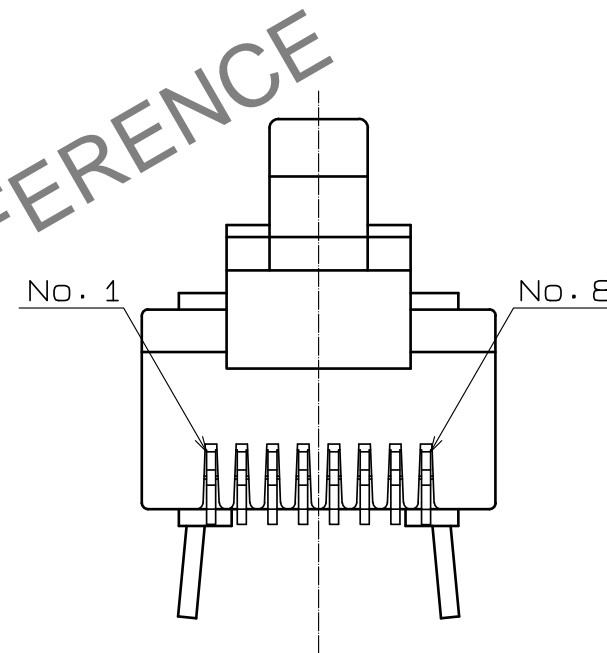


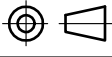

TABLE-1

| APPLICABLE CABLE WIRE   |                    |                                    |  |
|---|--------------------|------------------------------------|--|
|  | CONDUCTOR          | φ 0.5 SOLID WIRE                   |  |
|   |                    | AWG#24 STRANDED WIRE<br>(φ 0.2/7)  |  |
|   | INSULATOR DIAMETER | AWG#25 STRANDED WIRE<br>(φ 0.18/7) |  |
|   |                    | (φ 0.9~φ 1.0)                      |  |
|   |                    | JACKET DIAMETER<br>(φ 6.6)*1       |  |

\*1:THE OUTER DIAMETER OF THE VINYL JACKET VARIES SLIGHTLY DEPENDING ON THE HARDNESS. 6.6 DIA. IS FOR REFERENCE.



- NOTES
1. THE DIMENSIONS IN PARENTHESIS ARE FOR REFERENCE.
  2. APPLICABLE CABLE IS SHOWN IN TABLE-1.
  3. TO SATISFY CAT5e PERFORMANCE, PLEASE ASSEMBLE ACCORDING TO HRS INSTRUCTION.
  4. APPLY SEPARATELY ORDERED GUIDE PLATE TM21P-88P(22) CL222-2862-9-22.
  5. THIS PRODUCT SATISFIES CAT6 REQUIREMENTS FOR BASIC LINK CONFIGURATION. (THE CONNECTOR BY ITSELF IS NOT CAT6 COMPLIANT.) COUNTERPART RECEPTACLE IS SHOWN BELOW.  
TM21R-3C-88(\*\*)  
TM21R-5C-88(\*\*)  
TM21R-5C-88-LP(\*\*)

|   |   |   |            |  |   |
|---|---|---|------------|--|---|
| 1   | PHOSPHOR BRONZE   | CONTACT: Au PLATING 1.27 μm MIN<br>LEAD : Au PLATING 0.03 μm MIN<br>UNDER : Ni PLATING 2 μm MIN | 3          | BRASS                                      | OVER : Sn REFLOW PLATING 1 μm MIN<br>UNDER: Cu PLATING 0.5 μm MIN |
| NO.   | MATERIAL  | FINISH . REMARKS  | NO.        | MATERIAL                                   | FINISH . REMARKS  |
| UNITS<br>mm   |  | SCALE<br>4:1  | COUNT<br>1 | DESCRIPTION OF REVISIONS<br>DIS-E-00018150 | DESIGNED<br>MO. SHIMOYAMA   |
|  HIROSE ELECTRIC CO., LTD. |   | APPROVED : HO. MIWA   | 20050105   | DRAWING NO.                                | EDC3-121484-05  |
|   |   | CHECKED : TH. KAMEYA  | 20050105   | PART NO.                                   | TM21P-88P(31)   |
|   |   | DESIGNED : SS. SATOH  | 20050105   | CODE NO.                                   | CL0222-2862-9-31  |
|   |   | DRAWN : SS. SATOH   | 20050105   |  |   |