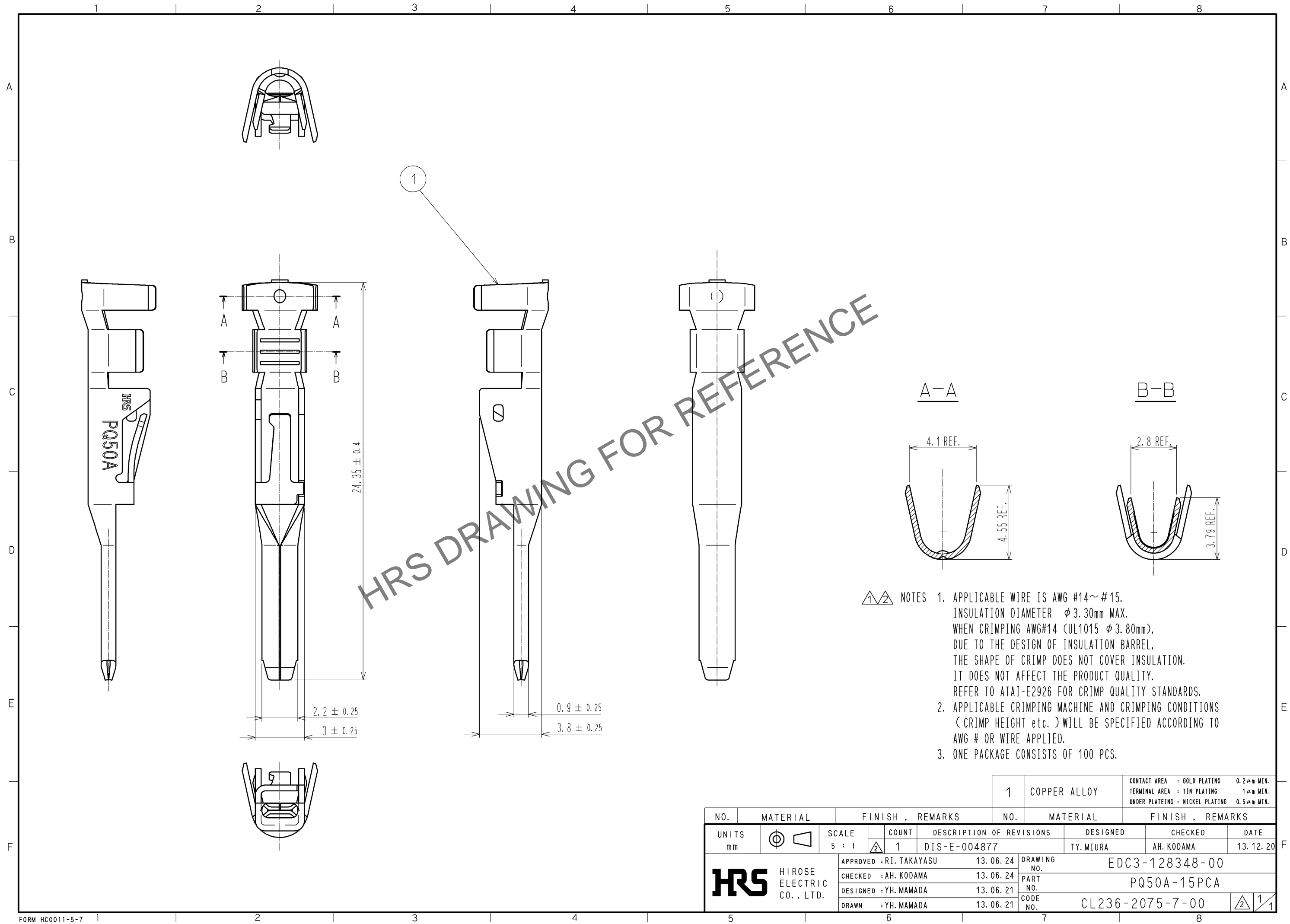


Sep.1.2025 Copyright 2025 HIROSE ELECTRIC CO., LTD. All Rights Reserved.
In case of consideration for using Automotive equipment / device which demand high reliability, kindly contact our sales window correspondents.



- △△ NOTES
1. APPLICABLE WIRE IS AWG #14~#15.
INSULATION DIAMETER $\phi 3.30\text{mm}$ MAX.
WHEN CRIMPING AWG#14 (UL1015 $\phi 3.80\text{mm}$),
DUE TO THE DESIGN OF INSULATION BARREL,
THE SHAPE OF CRIMP DOES NOT COVER INSULATION.
IT DOES NOT AFFECT THE PRODUCT QUALITY.
REFER TO ATAI-E2926 FOR CRIMP QUALITY STANDARDS.
 2. APPLICABLE CRIMPING MACHINE AND CRIMPING CONDITIONS
(CRIMP HEIGHT etc.) WILL BE SPECIFIED ACCORDING TO
AWG # OR WIRE APPLIED.
 3. ONE PACKAGE CONSISTS OF 100 PCS.

				1	COPPER ALLOY	CONTACT AREA : GOLD PLATING 0.2 μm MIN. TERMINAL AREA : TIN PLATING 1 μm MIN. UNDER PLATING : NICKEL PLATING 0.5 μm MIN.
NO.	MATERIAL	FINISH , REMARKS		NO.	MATERIAL	FINISH , REMARKS
UNITS mm		SCALE 5 : 1	COUNT 1	DESCRIPTION OF REVISIONS		DESIGNED TY. MIURA
				CHECKED AH. KODAMA		DATE 13. 12. 20
				DRAWING NO. EDC3-128348-00		
				PART NO. PQ50A-15PCA		
				CODE NO. CL236-2075-7-00		
						1/1