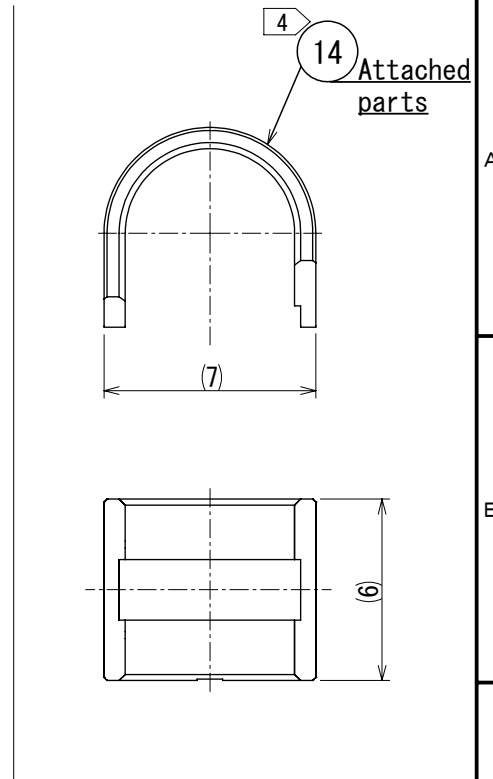
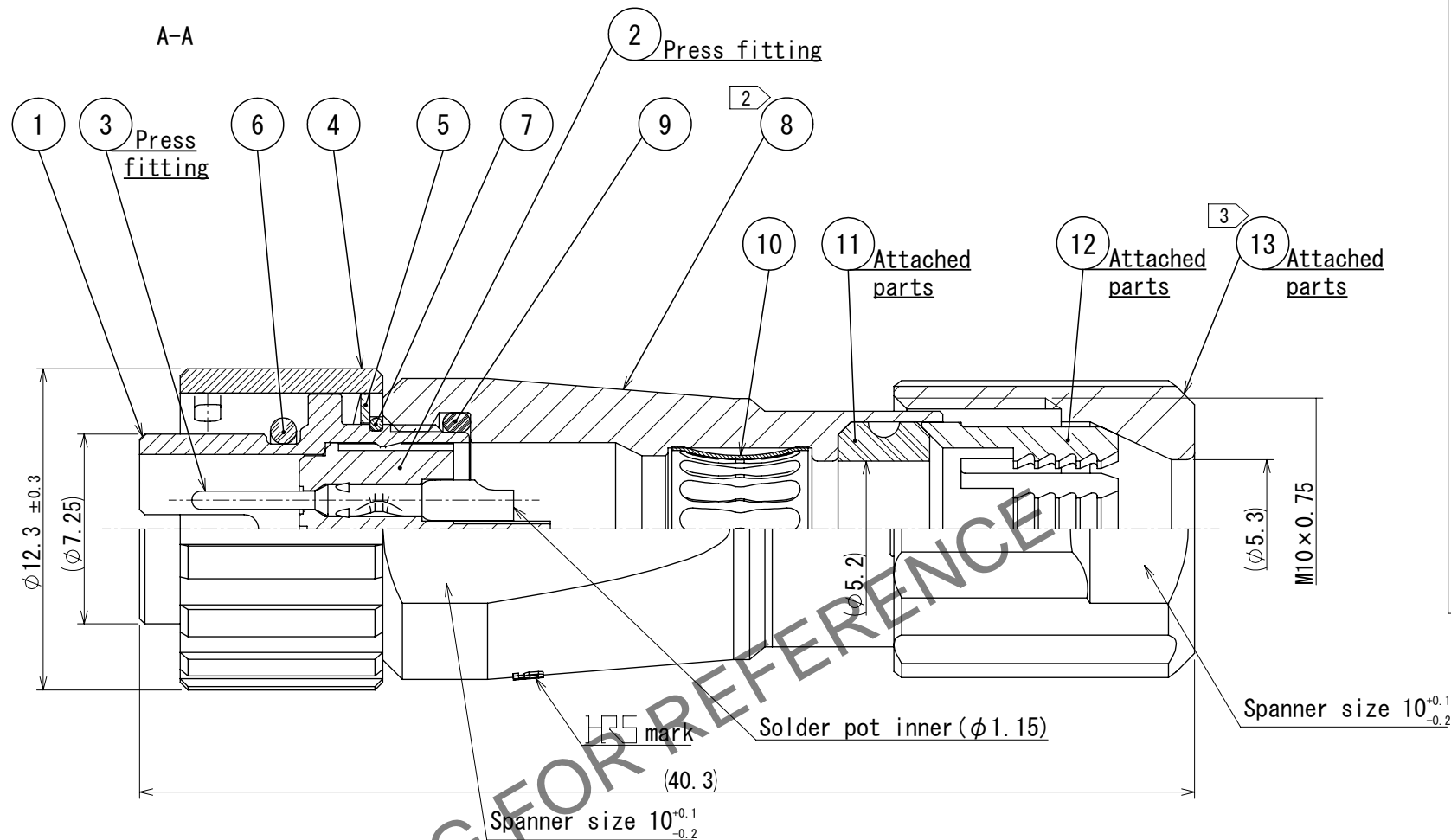
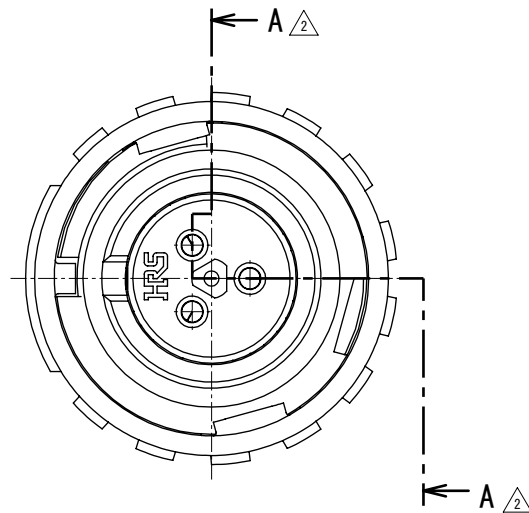
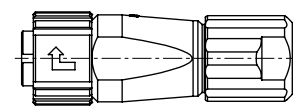


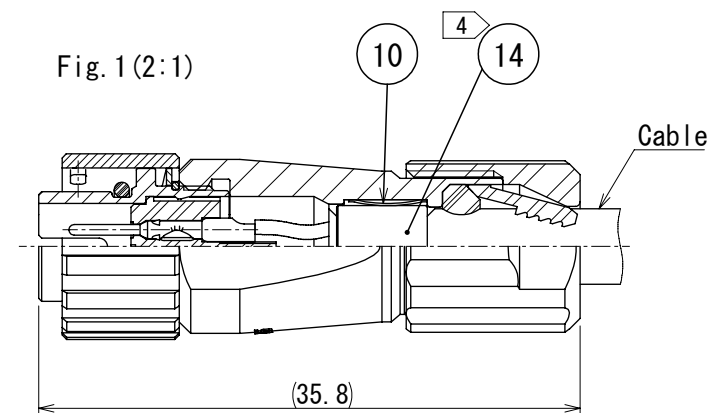
Oct.1.2025 Copyright 2025 HIROSE ELECTRIC CO., LTD. All Rights Reserved.  
In case of consideration for using Automotive equipment / device which demand high reliability, kindly contact our sales window correspondents.

5> Fig. 2 (1:1)



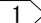


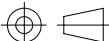

- Notes
- Plating (Ref. No. ③)  
Contact area : Gold 0.2  $\mu$ m min  
Others : Gold and Nickel  
Under plating : Nickel 2  $\mu$ m min
  - The recommended clamp torque of Ref. No. ⑧ to be 1 to 1.5 N  $\cdot$  m.  
Thread locker to the threaded portion of Ref. No. ① applies to prevent Ref. No. ⑧ from loosening.  
Recommended thread locker: Loctite 263, Henkel Japan Ltd.
  - The recommended clamp torque of Ref. No. ⑬ to be 0.8 to 1N  $\cdot$  m.  
Thread locker and lock primer to the threaded portion M10  $\times$  0.75 of Ref. No. ⑧ applies to prevent Ref. No. ⑬ from loosening.  
Recommended thread locker and lock primer : Loctite 263, Lock primer 7649, Henkel Japan Ltd.
  - Fasten Ref. No. ⑭ to the cable with the cable crimping tool.  
And make Ref. No. ⑭ contact with Ref. No. ⑩ (Refer to Fig. 1).  
Refer to the technical specification ETAD-C0099 for details.
  - Applicable cable crimping tool : HR10A-TC-02 (CL150-0041-2) (The hole diameter for crimping:  $\phi$  5.3)
  - Fig. 2 shows the appearance after assembly.
  - Applicable cable assembly fixture : LF07BP-T01 (CL150-0232-0)  
Cable assembly fixture is used as a receptacle stand of extract and the part No. ① of an assembly.
  - Rotation examples of No. ④, ⑧ and ⑬ to ① are shown.


Fig. 1 (2:1)



△ CAD change

7	Stainless steel		14	Brass	Nickel plating		
6	Chloroprene rubber	(Black)	13	Polyphenylene sulfide	(Natural, Brown) UL94V-0 		
5	Stainless steel		12	Polyamide	(Natural, Milky white) UL94V-0 		
4	Zinc alloy	Nickel plating	11	Chloroprene rubber	(Black)		
3	Copper alloy		10	Phosphor bronze	Nickel plating		
2	Polyphenylene sulfide	(Black) UL94V-0	9	Chloroprene rubber	(Black)		
1	Zinc alloy	Nickel plating	8	Zinc alloy	Nickel plating		
NO.	MATERIAL	FINISH , REMARKS		NO.	MATERIAL	FINISH , REMARKS	

UNITS mm		SCALE	COUNT	DESCRIPTION OF REVISIONS	DESIGNED	CHECKED	DATE
		4:1	 8	DIS-C-00019617	Y.J. KOGA	HY. KOBAYASHI	2025. 04. 21

 HIROSE ELECTRIC CO., LTD.	APPROVED : HY. KOBAYASHI	2018. 02. 21	DRAWING NO.  PART NO.  CODE NO.	EDC-114147-31-00		
	CHECKED : HY. KOBAYASHI	2018. 02. 21		LF07WBP-3P (31)		
	DESIGNED : TY. SUZUKI	2018. 02. 21				
	DRAWN : HM. SAITO	2018. 02. 21		CL0136-0004-0-31		
					