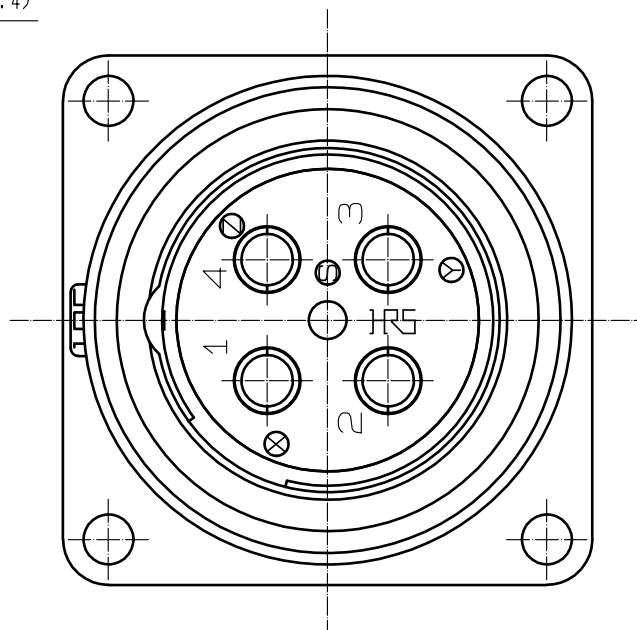
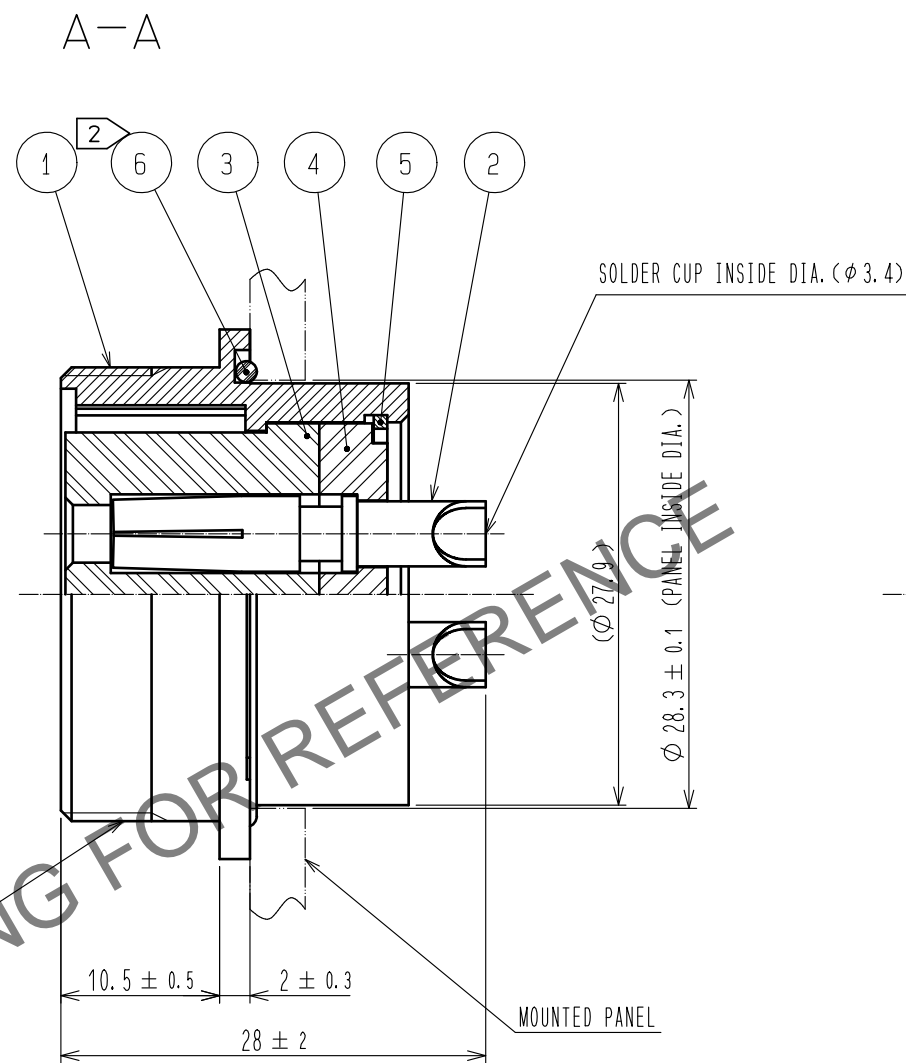
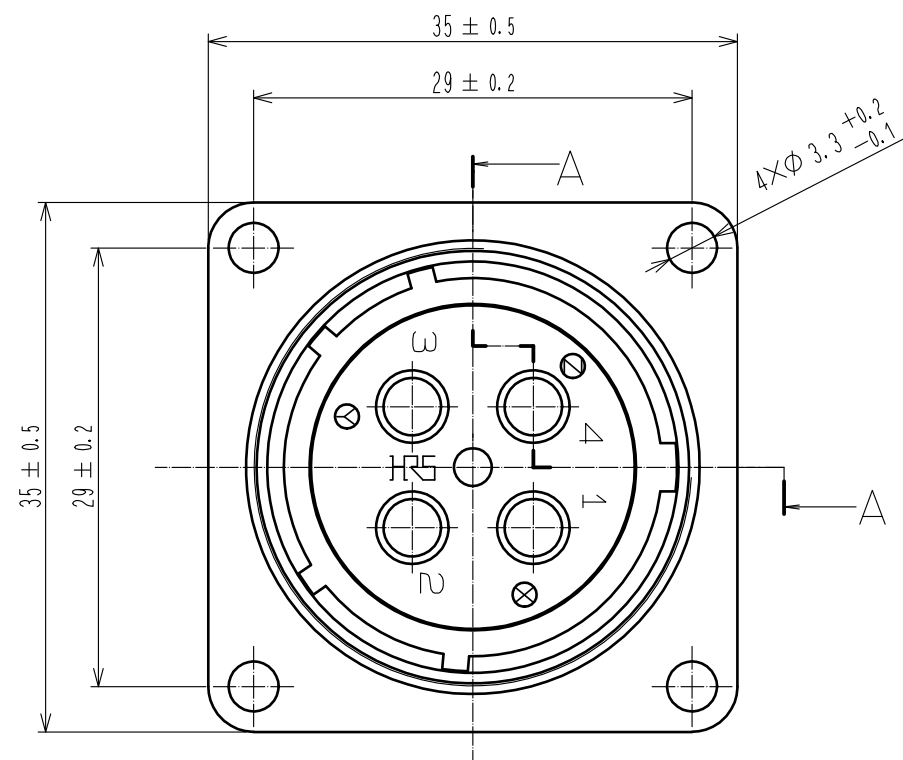
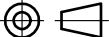



Oct.1.2025 Copyright 2025 HIROSE ELECTRIC CO., LTD. All Rights Reserved.
In case of consideration for using Automotive equipment / device which demand high reliability, kindly contact our sales window correspondents.



- NOTES
- 1 ONE EXAMPLE OF THE ROTATION THE SOLDER CUP OF REF.NO. ② IS SHOWN.
 - 2 WHEN MOUNTED ON CHASSIS, BE CAREFUL THAT REF.NO. ⑥ IS FITTED INTO THE INDICATES GROOVE ANY BITING.
 - 3 UL certified product(E52653).

3	POLYPHENYLENE SULFIDE	(BLACK) UL94V-0	6	SILICONE RUBBER	(BLACK)		
2	PHOSPHOR BRONZE	SILVER PLATING 2μm min.	5	PHOSPHOR BRONZE	NICKEL PLATING		
1	ALUMINUM ALLOY	BLACK CHROME PLATING	4	POLYPHENYLENE SULFIDE	(BLACK) UL94V-0		
NO.	MATERIAL	FINISH . REMARKS	NO.	MATERIAL	FINISH . REMARKS		
UNITS mm		SCALE 2 : 1	COUNT 1	DESCRIPTION OF REVISIONS DIS-C-00003802	DESIGNED YS. NARA	CHECKED EJ. KUNII	DATE 20200129
 HIROSE ELECTRIC CO., LTD.		APPROVED	HY. KOBAYASHI	20151021	DRAWING NO. EDC-118118-00-00		
		CHECKED	HY. KOBAYASHI	20151021	PART NO. JR25WRH-4S		
		DESIGNED	DS. MATSUNE	20151021	CODE NO. CL114-2186-2-00		
		DRAWN	DS. MATSUNE	20151021			