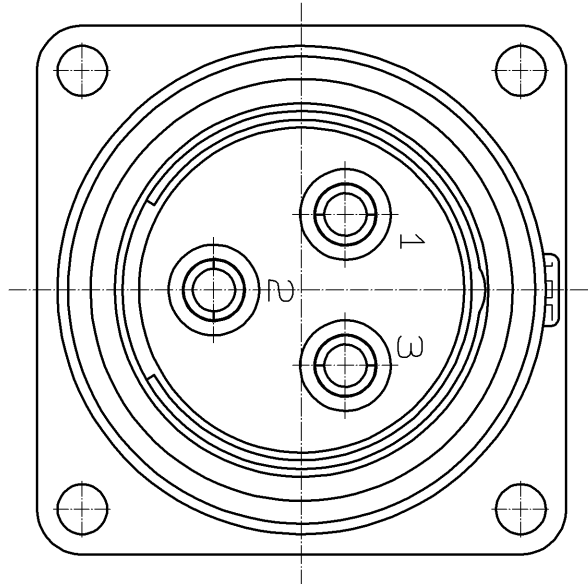
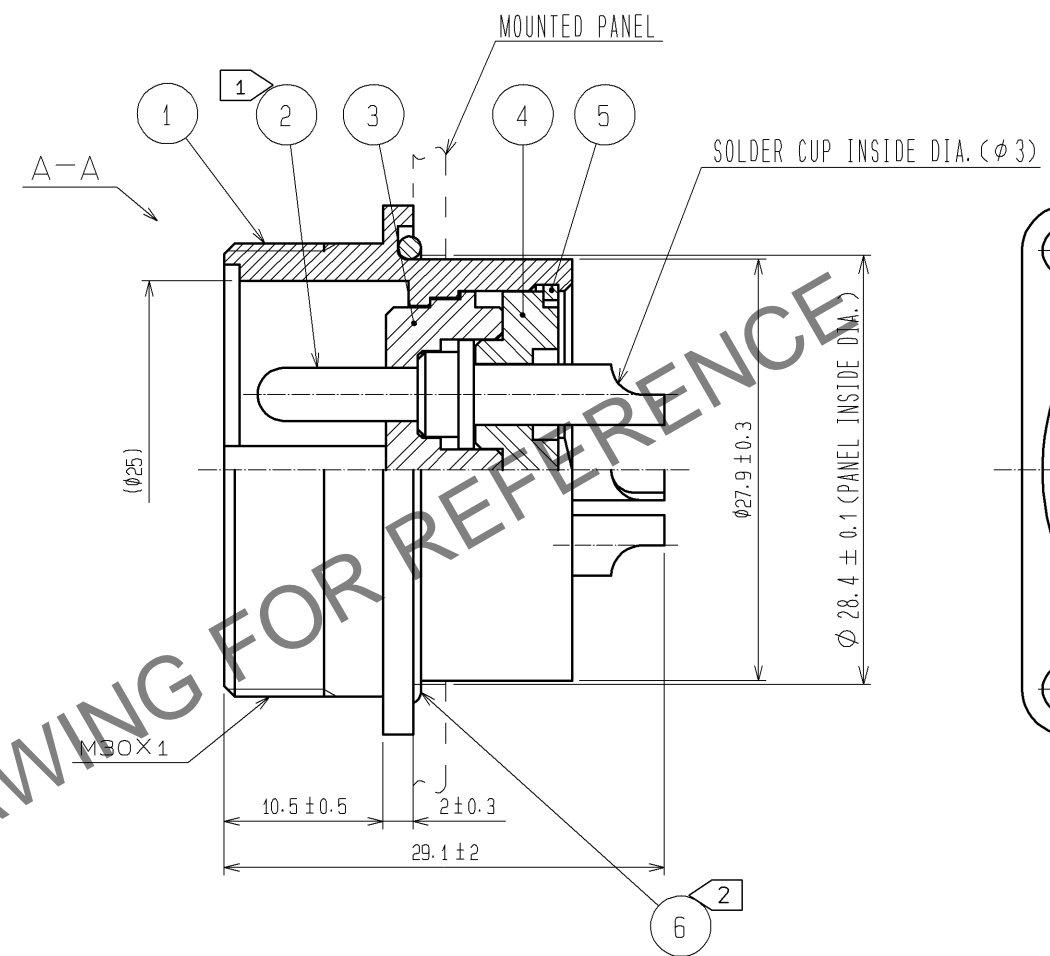
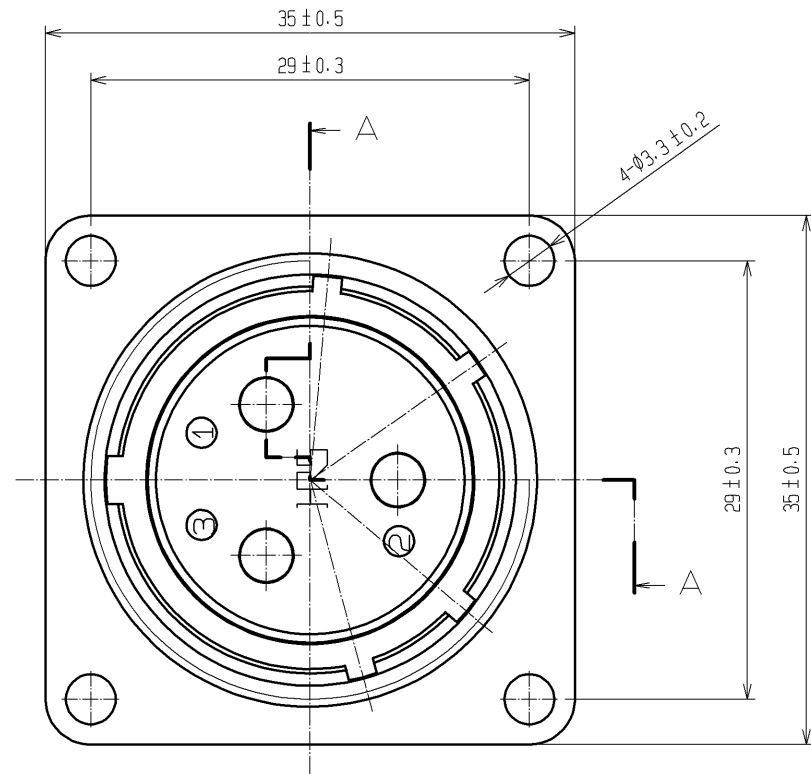
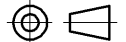





Apr.1.2025 Copyright 2025 HIROSE ELECTRIC CO., LTD. All Rights Reserved.
In case of consideration for using Automotive equipment / device which demand high reliability, kindly contact our sales window correspondents.



NOTES
① ROTATIONAL DIRECTION OF THE SOLDER CUP OF REF. NO. ② SHOWS AN EXAMPLE.
② MAKE SURE THAT REF. NO. ⑥ DOES NOT HAVE ANY FACTORS TO REDUCE WATER-RESISTANCY, SUCH AS SCRACH, TWIST, PINCHING, OR DUST.

3	POLYPHENYLENE SULFIDE	(BLACK) UL94V-0	6	SILICONE RUBBER	(BLACK)		
2	BRASS	SILVER PLATING 2μm min.	5	PHOSPHOR BRONZE	NICKEL PLATING		
1	ALUMINUM ALLOY	BLACK CHROME PLATING	4	POLYPHENYLENE SULFIDE	(BLACK) UL94V-0		
NO.	MATERIAL	FINISH , REMARKS	NO.	MATERIAL	FINISH , REMARKS		
UNITS mm		SCALE 2 : 1	COUNT 	DESCRIPTION OF REVISIONS	DESIGNED	CHECKED	DATE
 HIROSE ELECTRIC CO., LTD.		APPROVED :HY. KISHI	11. 03. 10	DRAWING NO.	EDC3-112112-71		
		CHECKED :HY. KISHI	11. 03. 10	PART NO.	JR25WR-3P(71)		
		DESIGNED :WR. AJIRO	11. 03. 10	CODE NO.	CL114-2158-7-71		
		DRAWN :WR. AJIRO	11. 03. 10	 1/1			