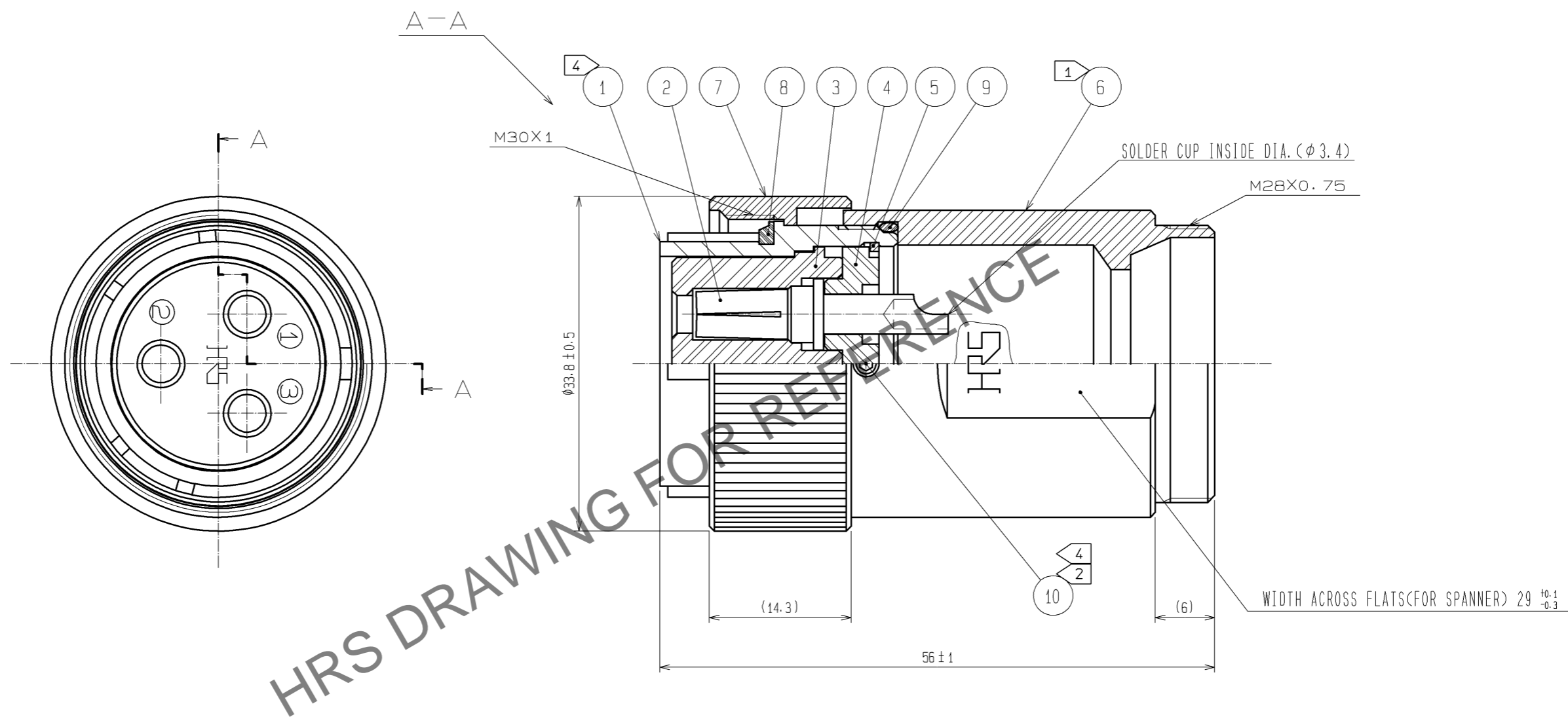


Jun.1.2025 Copyright 2025 HIROSE ELECTRIC CO., LTD. All Rights Reserved.
In case of consideration for using Automotive equipment / device which demand high reliability, kindly contact our sales window correspondents.



HRS DRAWING FOR REFERENCE

- NOTES
- ① THE RECOMMENDED CLAMP TORQUE REF. NO. ⑥ : 5 TO 5.5 N · m.
 - ② THE RECOMMENDED CLAMP TORQUE REF. NO. ⑩ : 0.3 TO 0.4 N · m.
 - ③ POSITIONAL RELATIONSHIP IN ROTATIONAL DIRECTION BETWEEN REF. NO. ① AND ⑥ SHOWS AN EXAMPLE.
 - ④ LOCTITE 271, HENKEL JAPAN OR EQUIVALENT IS RECOMMENDED TO PREVENT REF. NO. ① AND NO. ⑥ FROM LOOSENING.
 - ⑤ ROTATIONAL DIRECTION OF THE SOLDER CUP OF REF. NO. ② SHOWS AN EXAMPLE.
 - ⑥ THIS PRODUCT TO BE USED WITH CABLECLAMP, JR25WCC-*(71).
** DESIGNATE DIAMETER OF APPLICABLE.
 - ⑦ THE CABLE PULL AND TWISTING STRENGTH AND OTHER CHARACTERISTICS MAY DIFFER. DEPENDING ON THE CABLE STRUCTURE. PLEASE CONFIRM BEFORE THE USE.

NO.	MATERIAL	FINISH . REMARKS	NO.	MATERIAL	FINISH . REMARKS
5	PHOSPHOR BRONZE	NICKEL PLATING	10	STAINLESS STEEL	
4	POLYPHENYLENE SULFIDE	(BLACK) UL94V-0	9	SILICONE RUBBER	(BLACK)
3	POLYPHENYLENE SULFIDE	(BLACK) UL94V-0	8	SILICONE RUBBER	(BLACK)
2	PHOSPHOR BRONZE	SILVER PLATING 2μm min.	7	BRASS	BLACK CHROME PLATING
1	ALUMINUM ALLOY	BLACK CHROME PLATING	6	BRASS	BLACK CHROME PLATING

UNITS mm		SCALE 2 : 1	COUNT 	DESCRIPTION OF REVISIONS	DESIGNED	CHECKED	DATE
APPROVED : HY. KISHI 11.03.10 CHECKED : HY. KISHI 11.03.10 DESIGNED : WR. AJIRO 11.03.10 DRAWN : WR. AJIRO 11.03.10				DRAWING NO. EDC3-112113-71 PART NO. JR25WP-3S(71) CODE NO. CL114-2159-0-71			