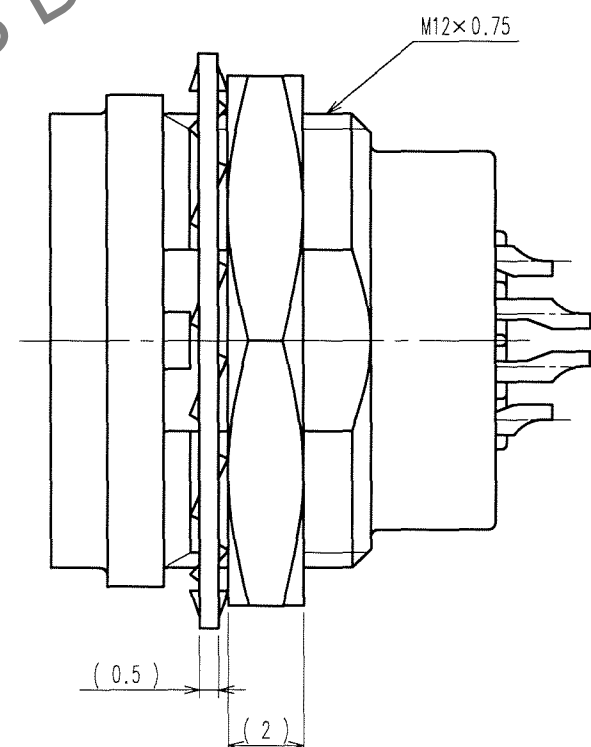
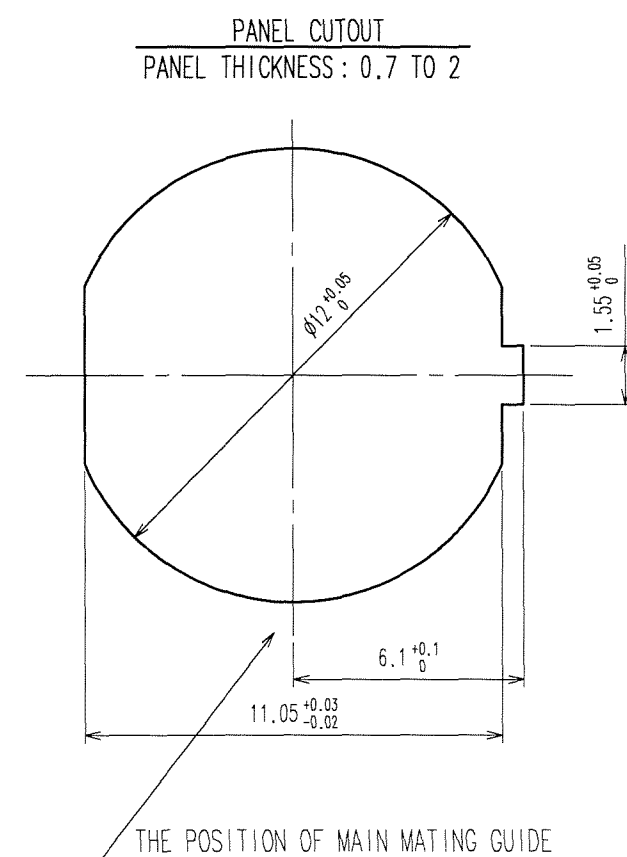
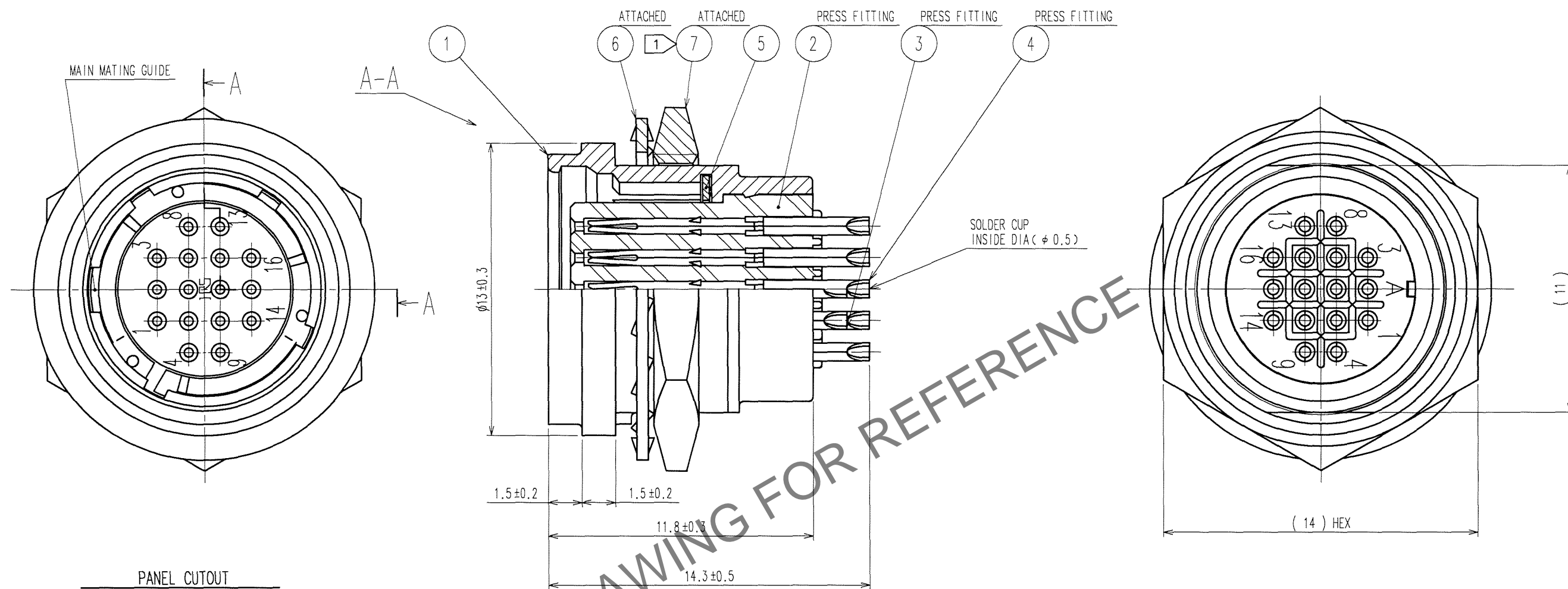




	COUNT	DESCRIPTION OF REVISIONS	BY	CHKD	DATE		COUNT	DESCRIPTION OF REVISIONS	BY	CHKD	DATE
▲	1	DIS-C-000585	T.K	E.K	07.07.27	▲					. .
▲					. .	▲					. .
▲					. .	▲					. .



- NOTES ① THE RECOMMENDED TIGHTENING TORQUE OF REF. No. ⑦ TO BE 1.5 N · m.  
COATING WITH LOCTITE 242 MANUFACTURED BY HENKEL JAPAN OR EQUIVALENT IS RECOMMENDED  
TO PREVENT LOOSENESS.
- ② CONTACT AREA : GOLD 0.2 μ m min.  
TERMINAL AREA : GOLD FLASH.  
UNDER PLATING : NICKEL 2 μ m min.

4	PHOSPHOR BRONZE	2			
3	PHOSPHOR BRONZE	2		7	BRASS $\triangle$ NICKEL PLATING
2	POLYPHENYLENE SULFIDE	(BLACK) 94V-0		6	STEEL ZINC CHROMATIZED (TRIVALENT CHROMIUM)
1	ZINC ALLOY	MATTE FINISH NICKEL PLATING		5	BERYLLIUM COPPER NICKEL PLATING
NO.	MATERIAL	FINISH, REMARKS	NO.	MATERIAL	FINISH, REMARKS

CODE NO. (OLD) CL		DRAWN M.SATO '06 09 20	DESIGNED Y.YAMADA '06 09 21	CHECKED E.EZAWA '06 09 21	APPROVED M.SATO '06 09 21	RELEASED . .
		DRAWING NO. EDC3-115057		PART NO. HR25A-9R-16S		
SCALE 5 : 1		 HIROSE ELECTRIC CO., LTD		CODE NO. CL125-0615-0-00		1/1
UNITS mm						

TO
R