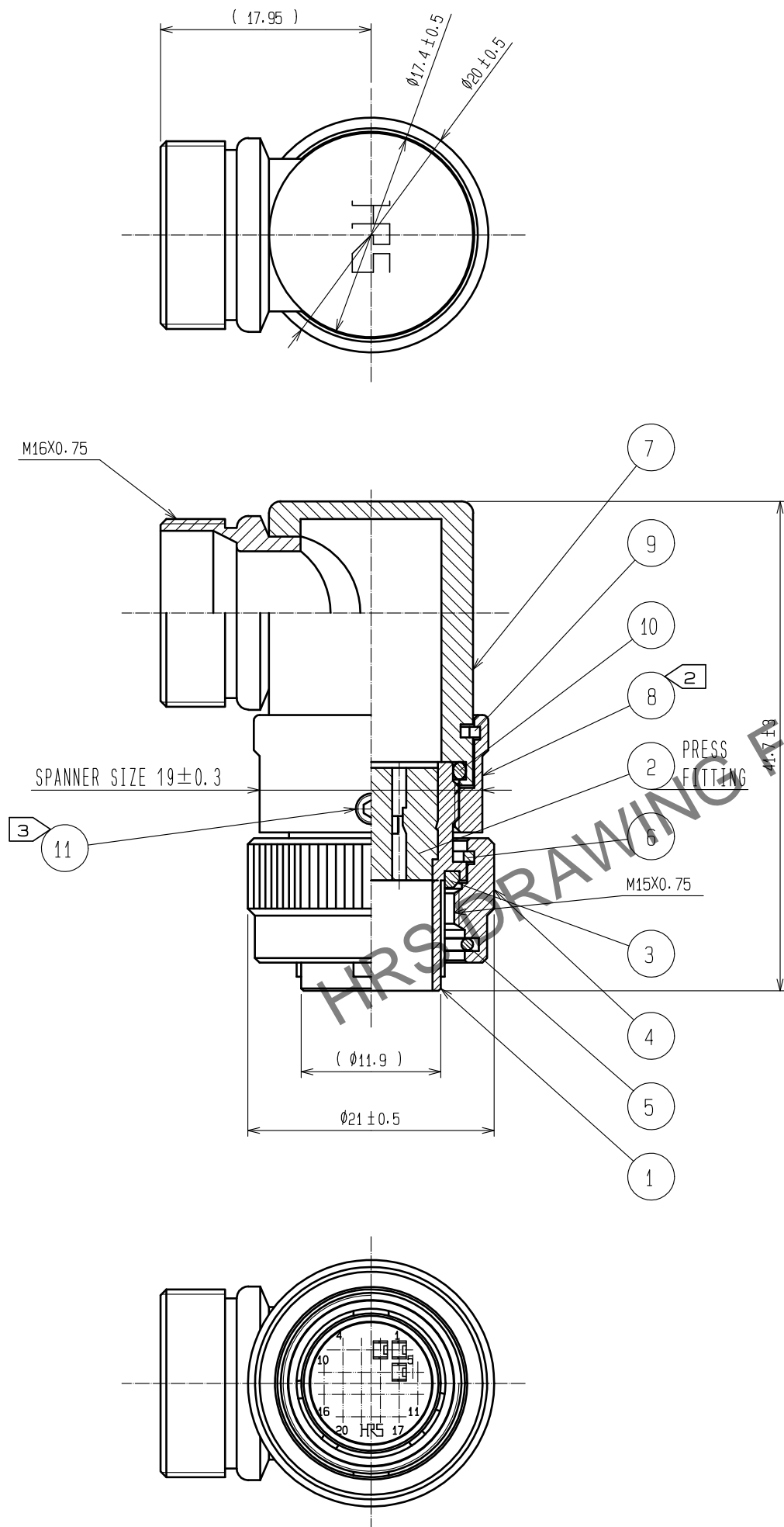
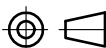
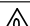




Nov.1.2025 Copyright 2025 HIROSE ELECTRIC CO., LTD. All Rights Reserved.
In case of consideration for using Automotive equipment / device which demand high reliability, kindly contact our sales window correspondents.



- NOTES
- ONE EXAMPLE OF THE ROTATION OF REF.NO.7,8 AND REF.NO.1 IS SHOWN.
 - THE RECOMMENDED CLAMP TORQUE REF.NO.8 : 3 TO 4 N · m.
LOCTITE 243, HENKEL JAPAN OR EQUIVALENT IS RECOMMENDED TO PREVENT REF.NO.8 FROM LOOSENING.
 - THE RECOMMENDED CLAMP TORQUE REF.NO.11 : 0.2 TO 0.3 N · m.
LOCTITE 243, HENKEL JAPAN OR EQUIVALENT IS RECOMMENDED TO PREVENT REF.NO.11 FROM LOOSENING.
 - THIS PRODUCT TO BE USED WITH CABLECLAMP, JR13WCC-*(72). THE RECOMMENDED CLAMP TORQUE : 3 TO 4 N · m. AND LOCTITE 243, HENKEL JAPAN OR EQUIVALENT IS RECOMMENDED TO PREVENT FROM LOOSENING. * DESIGNATE DIAMETER OF APPLICABLE CABLE.
 - THE CABLE PULL AND TWISTING STRENGTH AND OTHER CHARACTERISTICS MAY DIFFER, DEPENDING ON THE CABLE STRUCTURE. PLEASE CONFIRM BEFORE THE USE.

6	PHOSPHOR BRONZE	NICKEL PLATING						
5	STEEL	NICKEL PLATING		11	STAINLESS STEEL	JISB1177 HEAGON SOCKET SET SCREW M2.6X0.45		
4	BRASS	NICKEL PLATING		10	ACRYLONITRILE BUTADIENE RUBBER	(BLACK)		
3	ACRYLONITRILE BUTADIENE RUBBER	(BLACK)		9	PHOSPHOR BRONZE	NICKEL PLATING		
2	POLYBUTYLENE TEREPHTHALATE	(BLACK) UL94V-0		8	BRASS	NICKEL PLATING		
1	ZINC ALLOY	NICKEL PLATING		7	BRASS	NICKEL PLATING		
NO.	MATERIAL	FINISH . REMARKS		NO.	MATERIAL	FINISH . REMARKS		
UNITS mm		SCALE 2 : 1	 COUNT	DESCRIPTION OF REVISIONS		DESIGNED	CHECKED	DATE
 HIROSE ELECTRIC CO., LTD.		APPROVED :HY. KOBAYASHI	18. 02. 22	DRAWING NO.		EDC-116688-31-00		
		CHECKED :HY. KOBAYASHI	18. 02. 22	PART NO.		HR22-12WTLP-20PC(31)		
		DESIGNED :HY. KISHI	18. 02. 21	CODE NO.		CL122-0064-9-31		
		DRAWN :MK. INOUE	18. 02. 06			 1/1		