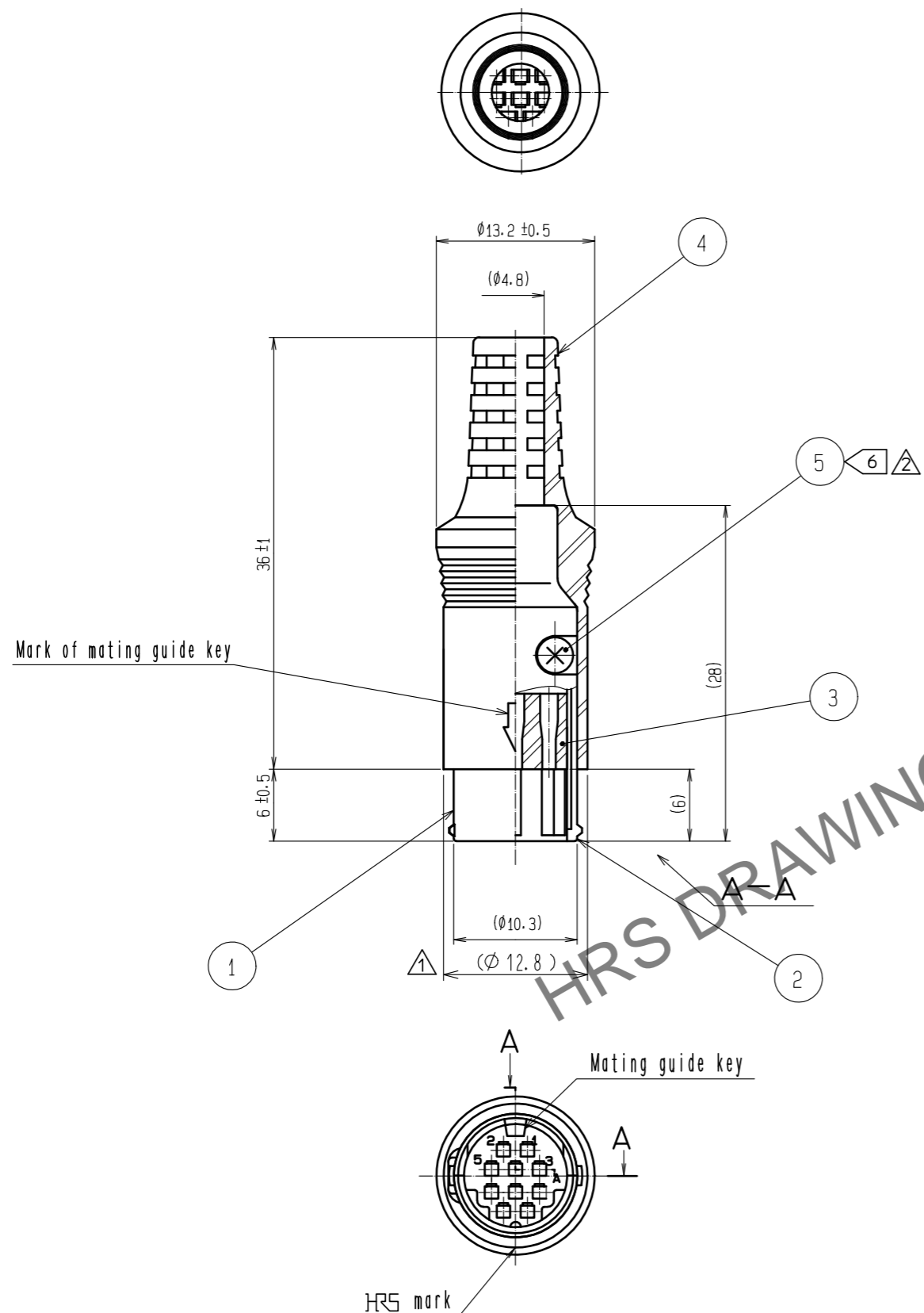


Sep.1.2025 Copyright 2025 HIROSE ELECTRIC CO., LTD. All Rights Reserved.
In case of consideration for using Automotive equipment / device which demand high reliability, kindly contact our sales window correspondents.



- Notes)
1. This product disassembled when delivered.
 2. Assembly of product to be as figure shown.
 - ⚠ 3. Applicable crimp contact : HR10-PC-113(71), applicable wire : AWG#26~#30.
 4. Applicable clamping jig : RP6-SC-TP.
 - ⚠ 5. The cable clamping power and the turning force, etc. are different according to the structure of the cable, and use it, please after it confirms it beforehand.
 - ⚠ 6 The recommended tightening torque, Ref. No. ⑤ : 0.17 to 0.2 N·m.

NO.	MATERIAL	FINISH . REMARKS	NO.	MATERIAL	FINISH . REMARKS
3	PBT	(Black) UL94V-0	5	Steel	Nickel plating Tapping screw M2×4
2	Zink alloy	Nickel plating	4	PVC	(Black) UL94V-0
1	Zink alloy	Nickel plating			

UNITS	SCALE	COUNT	DESCRIPTION OF REVISIONS	DESIGNED	CHECKED	DATE
mm	2 : 1	2	DIS-C-00003618	TH. KAMEYA	HY. KOBAYASHI	20191105

HRS HIROSE ELECTRIC CO., LTD.	APPROVED : TM. AKIYAMA	20051201	DRAWING NO.	EDC-047184-71-71
	CHECKED : TM. AKIYAMA	20051201	PART NO.	HR212-10P-10PC(71)
	DESIGNED : HS. KAWASHIMA	20051119	CODE NO.	CL112-4052-4-71
	DRAWN : HS. KAWASHIMA	20051119		