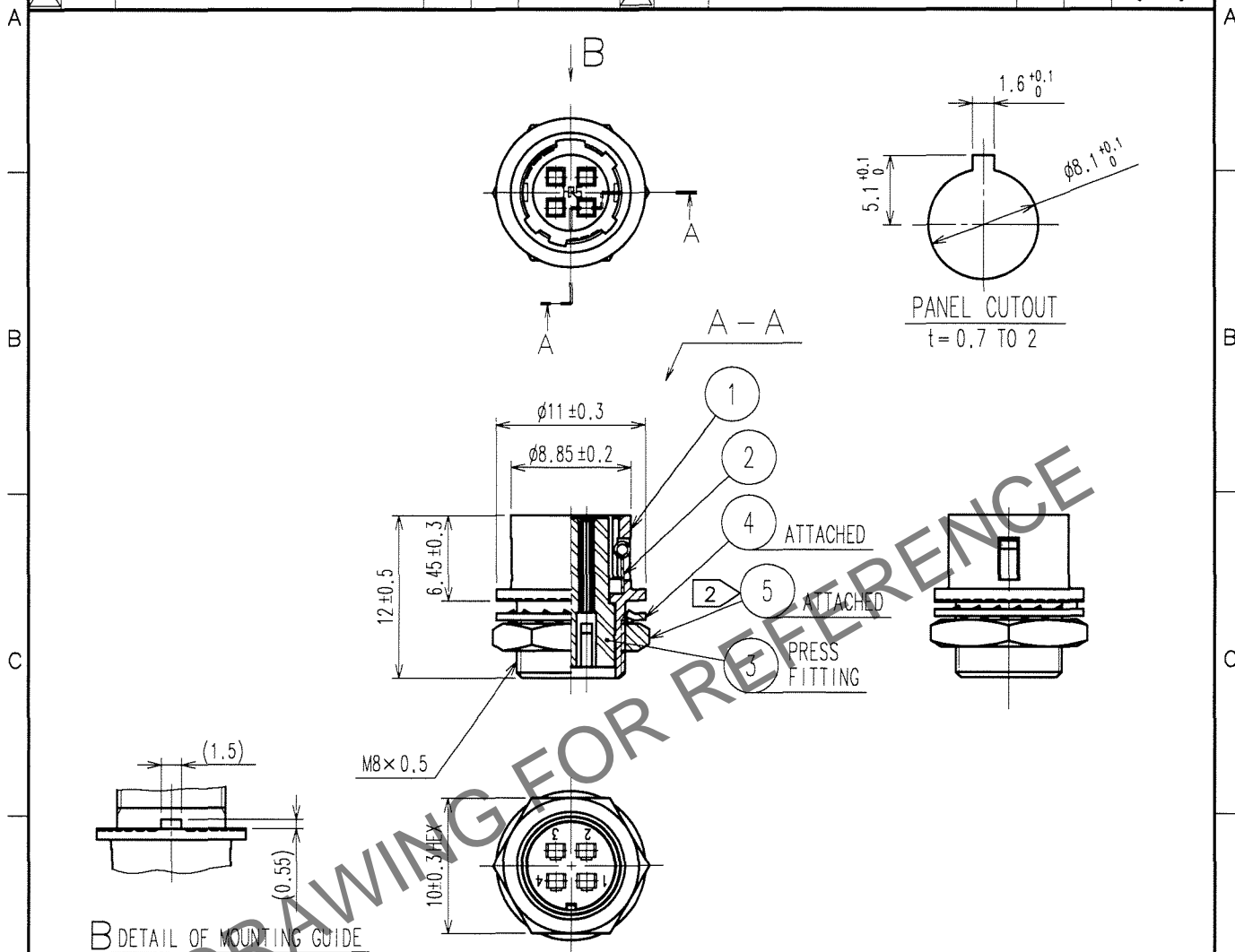


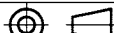

Nov. 1. 2025 Copyright 2025 HIROSE ELECTRIC CO., LTD. All Rights Reserved.

	COUNT	DESCRIPTION OF REVISIONS	BY	CHKD	DATE		COUNT	DESCRIPTION OF REVISIONS	BY	CHKD	DATE
△					. .	△					. .
△						△					. .
△						△					. .



NOTES 1 APPLICABLE CRIMP CONTACT:HR12-SC-212(CL112-0408-9)  
APPLICABLE WIRE:AWG#26 TO #30(COVERED WIRE MAX.OUTSIDE DIA.φ 1)  
APPLICABLE CONTACT REMOVAL TOOL(EXTRACTION TOOL):HR12-SC-TP(CL150-0050-3)  
② THE RECOMMENDED CLAMP TORQUE OF REF. NO. ⑤ TO BE 1.5 N·m.  
LOCTITE 242, HENKEL JAPAN OR EQUIVALENT IS RECOMMENDED TO  
PREVENT REF. NO. ⑤ FROM LOOSENING.

3	POLYBUTYLENE TEREPHTHALATE	(BLACK) UL94V-0			
2	STAINLESS STEEL		5	BRASS	NICKEL PLATING
1	ZINC ALLOY	MATTE FINISH NICKEL PLATED	4	PHOSPHOR BRONZE	NICKEL PLATING
NO.	MATERIAL	FINISH, REMARKS	NO.	MATERIAL	FINISH, REMARKS

CODE NO. (OLD) CL		DRAWN <i>M. Sato</i> 07.03.23	DESIGNED <i>E. Kuniti</i> 07.03.24	CHECKED <i>E. Kuniti</i> 07.03.24	APPROVED <i>M. Sato</i> 07.03.28	RELEASED
		DRAWING NO. EDC4-042724-73		PART NO. HR10G-7R-4SC(73)		
SCALE 2 : 1		 HIROSE ELECTRIC CO., LTD.		CODE NO. CL110-1701-6-73		1/1
UNITS mm						