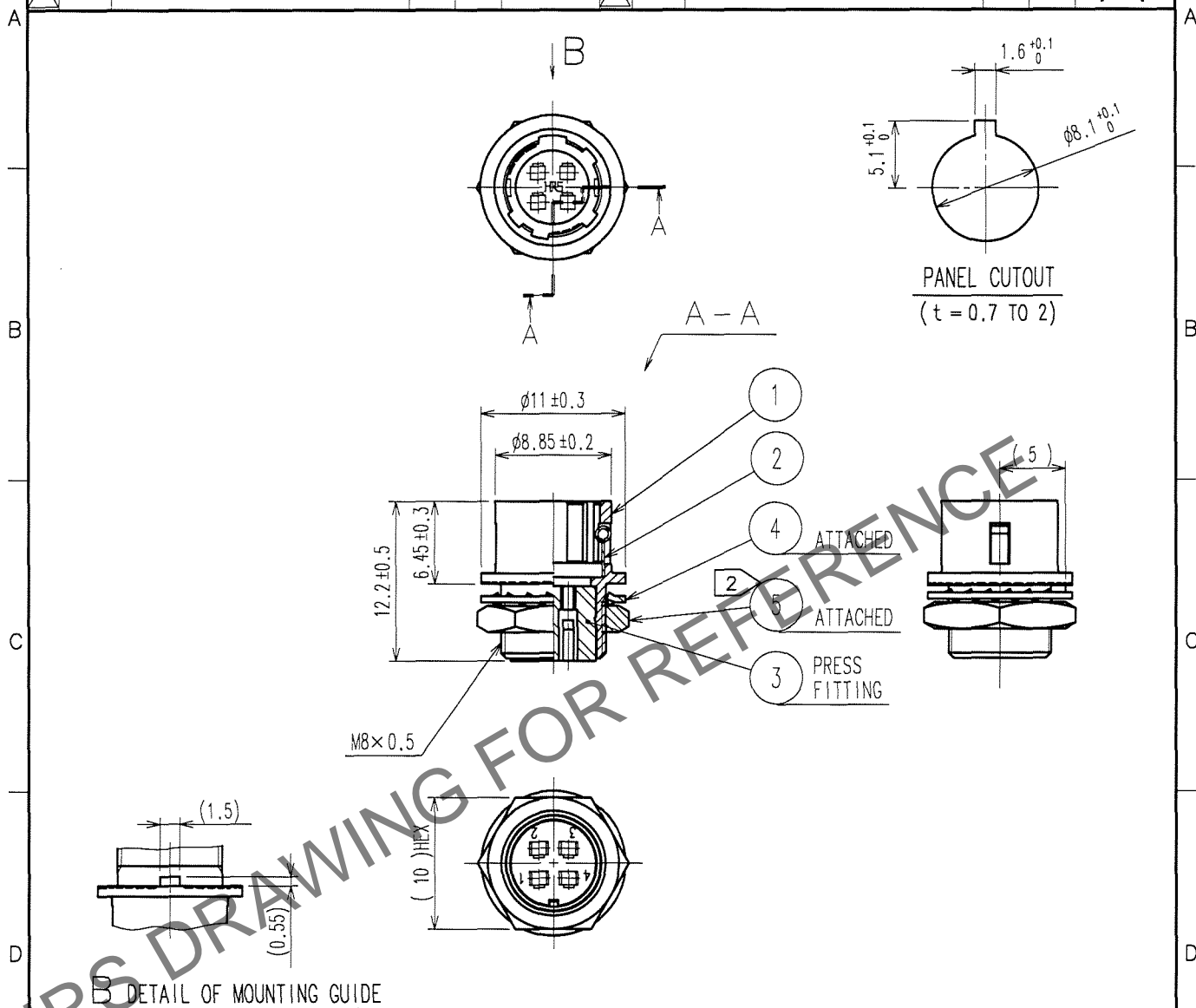
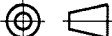



Dec.1.2025 Copyright 2025 HIROSE ELECTRIC CO., LTD. All Rights Reserved.
In case of consideration for using Automotive equipment / device which demand high reliability, kindly contact our sales window correspondents.

1					2			3			4		
	COUNT	DESCRIPTION OF REVISIONS	BY	CHKD	DATE		COUNT	DESCRIPTION OF REVISIONS	BY	CHKD	DATE		
△					. .	△					. .		
△						△					. .		
△						△					. .		



NOTES 1 APPLICABLE CRIMP CONTACT:HR10-PC-212(CL110-0514-3)
APPLICABLE WIRE:AWG#26 TO #30(COVERED WIRE MAX,OUTSIDE DIA.φ 1)
APPLICABLE CONTACT REMOVAL TOOL(EXTRACTION TOOL):RP6-SC-TP(CL150-0039-0)
2 THE RECOMMENDED CLAMP TORQUE OF REF. NO. ⑤ TO BE 1.5 N·m.
LOCTITE 242, HENKEL JAPAN OR EQUIVALENT IS RECOMMENDED TO
PREVENT REF. NO. ⑤ FROM LOOSENING.

3	POLYBUTYLENE TEREPHTHALATE	(BLACK)	UL94V-0				
2	STAINLESS STEEL			5	BRASS	NICKEL PLATING	
1	ZINC ALLOY	MATTE FINISH NICKEL PLATED		4	PHOSPHOR BRONZE	NICKEL PLATING	
NO.	MATERIAL	FINISH, REMARKS		NO.	MATERIAL	FINISH, REMARKS	
CODE NO. (OLD)			DRAWN	DESIGNED	CHECKED	APPROVED	RELEASED
CL			M. Sato 07.04.11	T. Horie 07.04.11	E. Kurita 07.04.11	M. Sato 07.04.11	
		DRAWING NO.		PART NO.			
SCALE		EDC4-042725-73		HR10G-7R-4PC(73)			
2 : 1				CODE NO.			1/1
UNITS				CL110-1702-9-73			
mm		HIROSE ELECTRIC CO.,LTD.					

TO
R