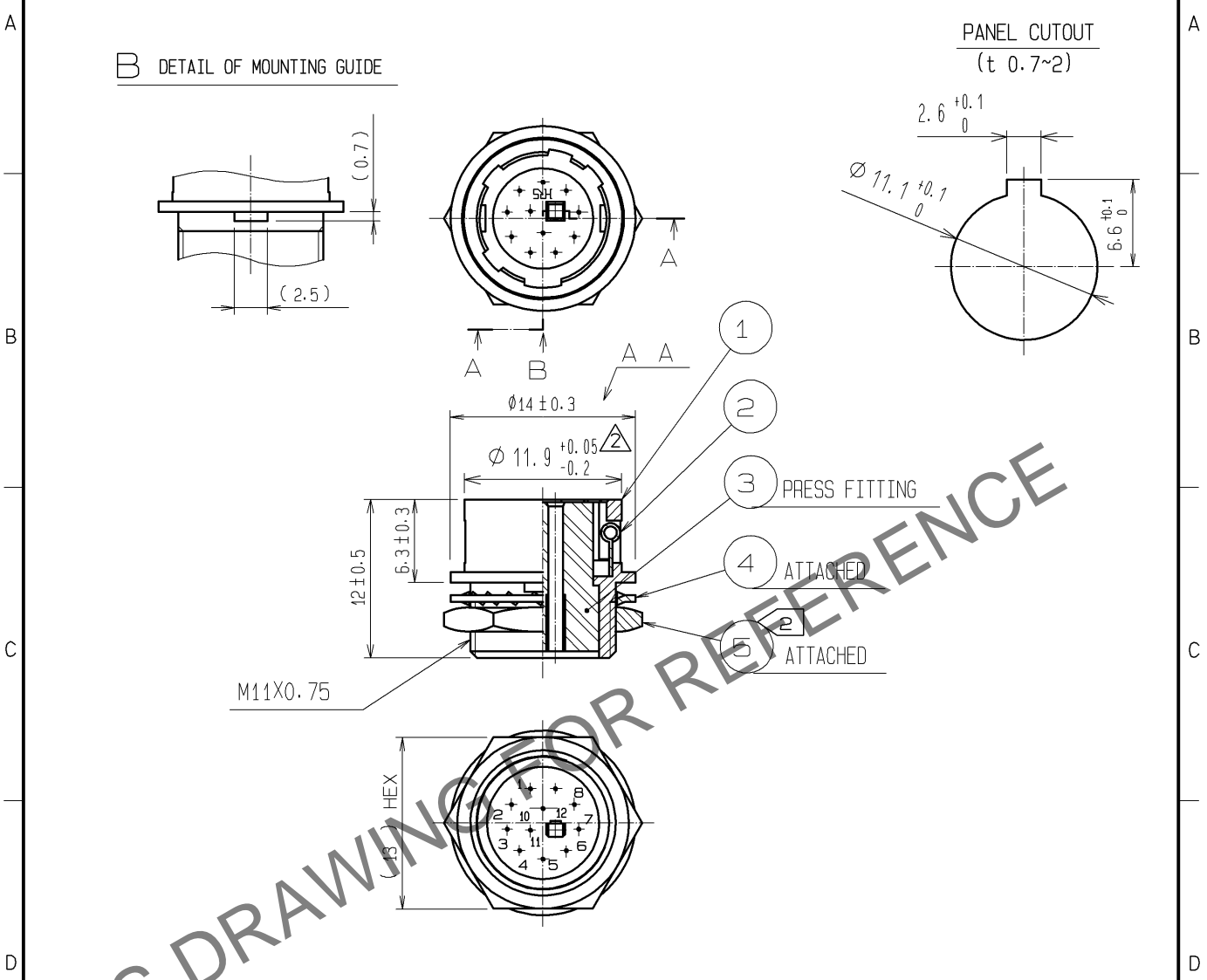


Dec.1.2025 Copyright 2025 HIROSE ELECTRIC CO., LTD. All Rights Reserved.
In case of consideration for using Automotive equipment / device which demand high reliability, kindly contact our sales window correspondents.



NOTES 1 APPLICABLE CRIMP CONTACT: HR12-SC-212
(AWG#26 TO #30, INSULATION OUTER DIA $\phi 1$ MAX)
EXTRACTION TOOL: HR12-SC-TP
2 THE RECOMMENDED CLAMP TORQUE OF REF.NO. ⑤ : 2N·m
LOCTITE 243, HENKEL JAPAN OR EQUIVALENT IS RECOMMENDED TO
PREVENT REF. NO. ⑤ FROM LOOSENING.

3	PBT	(BLACK) UL94V-0	5	BRASS ①	NICKEL PLATING
2	STAINLESS STEEL		4	PHOSPHOR BRONZE	NICKEL PLATING
1	ZINC ALLOY	MATTE FINISH NICKEL PLATED			
NO.	MATERIAL	FINISH, REMARKS	NO.	MATERIAL	FINISH, REMARKS

UNITS mm		SCALE 2 : 1	COUNT ② 2	DESCRIPTION OF REVISIONS DIS-C-003736	DESIGNED HR. SATO	CHECKED HY. KISHI	DATE 14. 11. 25
-------------	--	----------------	--------------	--	----------------------	----------------------	--------------------

	APPROVED : MO. SATOH	06. 07. 23	DRAWING NO.	EDC4-021262-71	
	CHECKED : EJ. KUNII	06. 07. 22	PART NO.	HR10A-10R-12SC(71)	
	DESIGNED : TP. KOMATSU	06. 07. 19	CODE NO.	CL110-0608-5-71	② 1/1
	DRAWN : TP. KOMATSU	06. 07. 19			